



SACCHAROMETERS

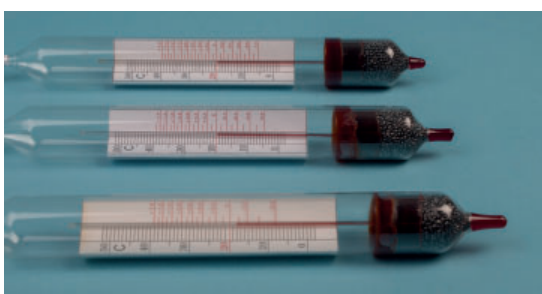
Code KLJ002_024

Saccharometers are a special type of densimeter designed to measure the sugar (sucrose) concentration in a solution. Their stem is graduated in the Brix scale, where 1 degree Brix ($^{\circ}\text{Bx}$) corresponds to 1 g of sucrose per 100 g of solution (1% by weight).

Nahita saccharometers offer a wide measurement range, adapting to various needs. Additionally, they are available with or without an integrated thermometer (0-50 $^{\circ}\text{C}$), allowing the temperature of the analysed solution to be always monitored.

These instruments do not include a batch certificate.

Without thermometer



Code	Range ($^{\circ}\text{Bx}$)	Divisions	Length (mm)	\varnothing (mm)
KLJ012	0-10	1/10	305	26
KLJ013	10-20	1/10	305	26
KLJ014	20-30	1/10	305	26
KLJ015	30-40	1/10	305	26
KLJ016	40-50	1/10	305	26
KLJ017	50-60	1/10	305	26
KLJ018	60-70	1/10	305	26
KLJ019	70-80	1/10	305	26
KLJ020	80-90	1/10	305	26
KLJ021	0-30	1/5	280	18
KLJ022	30-60	1/5	280	18
KLJ023	60-90	1/5	280	18

With thermometer

Code	Range ($^{\circ}\text{Bx}$)	Divisions	Length (mm)	\varnothing (mm)
KLJ008	70-80	1	370	26
KLJ009	80-90	1	370	26
KLJ010	30-60	1	370	21
KLJ011	60-90	1	370	21
KLJ002	0-10	1/10	375	25
KLJ004	20-30	1/10	375	25
KLJ005	30-40	1/10	375	25
KLJ006	40-50	1/10	375	25
KLJ007	50-60	1/10	375	25
KLJ003	0-20	1/5	375	18
KLJ024	10-20	1/5	375	18