

# LABORATORY ESSENTIALS

2026



DISCOVER IT!



## BENCHTOP AUTOCLAVE

ZCK018

ZCK019



Full automation



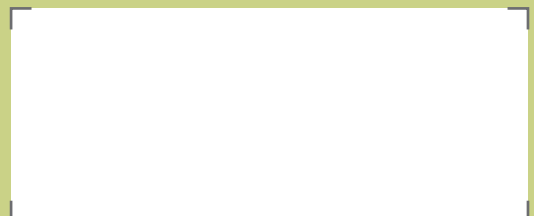
Variety of programs



Safety and control

Offers valid until 07/31/2026.  
Recommended retail prices, excluding VAT, valid except for typographical errors.  
Non-contractual photographs. Offer limited to available stock. We reserve the right to limit the quantity requested. In case of stock shortage, we may offer alternatives equivalent to the requested item, with a different price but the same discount as the initially requested item.

DISTRIBUTED BY:



MORTAR WITH SPOUT AND PESTLE

15%



- Material: AISI 304 stainless steel

Code	Cap.	Ext. Ø	H*	Hand length
BBW002	500 mL	125 mm	83 mm	130 mm
BBW003	750 mL	140 mm	92 mm	130 mm
BBW004	1000 mL	160 mm	106 mm	130 mm
BBW005	1500 mL	180 mm	112 mm	130 mm
BBW006	2000 mL	200 mm	120 mm	130 mm

\* height including base

DESICCATOR WITH KNOB & STOPCOCK

20%



Dimensions



d1: External diameter  
d2: Internal diameter

ISO  
13130

BORO  
3.3

- Without porcelain disc; includes lid with plastic stopper.

Code	d2	d1
BDB006	100 mm	151 mm
BDB007	150 mm	210 mm
BDB008	200 mm	269 mm
BDB009	250 mm	329 mm
BDB010	300 mm	392 mm

DESICCATOR WITH KNOB

20%



Dimensions



d1: External diameter  
d2: Internal diameter

ISO  
13130

BORO  
3.3

- Includes lid with polypropylene stopper. Does not include porcelain disc.

Code	d2	d1
BDD006	100 mm	151 mm
BDD007	150 mm	210 mm
BDD008	200 mm	269 mm
BDD009	250 mm	329 mm
BDD010	300 mm	392 mm

CELL CULTURE PLATE

15%



- DNase-, RNase-, and pyrogen-free. Individually bagged.
- Wells numbered with alphanumeric coding for easy identification. Sterilized by electron beam (E-beam).

Code	Wells	Bottom	Working volume	Pack
BRL001	6	Flat	1.90/2.90 mL	B/50
BRL002	12	Flat	0.76/1.14 mL	B/50
BRL003	24	Flat	0.38/0.57	B/50
BRL004	48	Flat	0.19/0.29	B/50
BRL005	96	Flat	0.075/0.20	B/50
BRL006	96	U-shaped	0.075/0.20	B/50

CRYOTUBE WITH EXTERNAL THREADED CAP

HASTA  
20%



- Made of medical-grade polypropylene, resistant to freezing and thawing. Transparent, user-friendly design.
- Maximum liquid storage is 80% of total capacity. Temperature resistance range: -196°C to +121°C.
- Free of DNase/RNase, endotoxins, and human DNA.

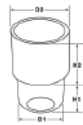
Code	Capacity	Thread	Pack
BGN048	1 mL	External	B/100
BGN049	1 mL	Internal	B/100
BGN050	2 mL	External	B/100
BGN051	2 mL	Internal	B/100
BGN052	3,6 mL	External	B/100
BGN053	3,6 mL	Internal	B/100
BGN054	5 mL	External	B/100
BGN055	5 mL	Internal	B/100

STOPPER RUBBER WITH FOLDING SKIRT

10%



Dimensions



d1: diameter  
d2: diameter  
H1: height of reversible part  
H2: height of inner part



- Working temperature range: 60/70°C
- Made of natural rubber. Not suitable for repeated sterilization in an autoclave.

Code	D1	D2	H1	H2	Lot
BMJ012	10.2 mm	13.3 mm	9.7 mm	10.2 mm	10
BMJ013	13 mm	18.7 mm	9.7 mm	10.2 mm	10
BMJ014	15.85 mm	20.2 mm	15.2 mm	15 mm	10
BMJ015	24 mm	28.3 mm	13.5 mm	21.4 mm	10
BMJ016	13.6 mm	18 mm	10 mm	15.6 mm	10
BMJ017	18.5 mm	24 mm	14.8 mm	18.5 mm	10
BMJ018	24.4 mm	28.8 mm	15.4 mm	21 mm	10
BMJ019	28.6 mm	34.6 mm	19.7 mm	16.5 mm	10

INFRARED STERILIZER

15%



- Possibility of sterilization at: 400°C and 850°C.

Code	BRG016	BRG025
Ø hole	14 mm	35 mm
Tube length	150 mm	100 mm
Dimensions	175x135x190 mm	147x130x200 mm

DIGITAL COLONY COUNTER

15%



Code	BRJ003
Display	LED
Magnification	2x
Operating functions	average, zero (reset), countdown
Output	USB
Dimensions	35x30x37 cm

DOUBLE BAG FOR SAMPLE TRANSPORT

25%



TAKE ADVANTAGE OF A  
**25%**  
DISCOUNT



Code	Dim. (zip bag)		Dim. (doc. bag)	
	Length	Width	Length	Width
BYF105	240 mm	155 mm	225 mm	155 mm

ZIP-LOCK BAG, WITH WRITING BANDS

15%



Code	Length x Width	Pack	Lot
BYF117	80x60 mm	B/100	10
BYF118	110x70 mm	B/100	10
BYF119	150x100 mm	B/100	10
BYF120	180x120 mm	B/100	10
BYF121	220x150 mm	B/100	10
BYF122	250x180 mm	B/100	10
BYF123	300x200 mm	B/100	10

CELL FREEZING CONTAINER

20%



ENDO plasticware



- Made of sturdy cardboard with a coated top layer. Chemically resistant to alcohols and mild organic solvents.
- Stable temperature range from -196°C to 121°C. Suitable for storage in liquid nitrogen.

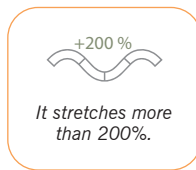
Code	Cap.	Material	Color
BYF129	12x1,5/2 mL	Foam	Blue
BYF130	18x1,5/2 mL	PC	White

FILM PARAFILM ROLL

5%



PARAFILM



- The flexible, self-sealing material allows it to conform to irregular shapes and surfaces.
- Resistant for up to 48 hours to many polar substances such as saline solutions, inorganic acids, and alkaline solutions.

Code	Roll of	Lot
BYH502	38 m x 10 cm	12
BYH503	75 m x 10 cm	12

PARAFILM M DISPENSER

10%



Nahita



- Made of acrylic. Designed for the storage, dispensing, and cutting of Parafilm® M.
- Compatible with rolls, tapes, and labels 5 and 10 cm wide.
- Hinged top lid for easy dispenser reloading.

Code	Dimensions
BYK002	180x120x160

\* Parafilm roll not included

LOW FORM BEAKER

8%



BORO 3.3

DIN 12331

ISO 3819

GLASSCO

Code	Cap.	Ext. Ø	H.	Lot
CBC089	10 mL	26 mm	35 mm	10
CBC090	25 mL	35 mm	51 mm	10
CBC091	50 mL	42 mm	58 mm	12
CBC092	100 mL	50 mm	70 mm	12
CBC093	150 mL	60 mm	88 mm	10
CBC081	250 mL	70 mm	95 mm	12
CBC082	400 mL	80 mm	110 mm	10
CBC083	600 mL	90 mm	125 mm	6
CBC084	1000 mL	105 mm	145 mm	6

BEAKER LOW FORM

5%



ENDO plasticware

ISO 6706

DIN 12681



Code	Cap.	Grad.	Ext. Ø	H.	Lot
CBG028	25 mL	1 mL	33 mm	45 mm	10
CBG029	50 mL	2 mL	45 mm	60 mm	10
CBG030	100 mL	5 mL	53 mm	70 mm	10
CBG031	250 mL	10 mL	78 mm	95 mm	10
CBG032	500 mL	10 mL	88 mm	119 mm	10
CBG033	1000 mL	20 mL	104 mm	140 mm	6

PP GRADUATED BEAKER LOW FORM

10%



ISO 7056

AUTO +121°

APTO

Kartell

Code	Cap.	Grad.	d. x H.	Lot
CBH008	100 mL	5 mL	51x72 mm	12
CBH009	250 mL	10 mL	71x95 mm	16
CBH010	500 mL	10 mL	87x119 mm	12
CBH011	1000 mL	20 mL	109x147 mm	4
CBH012	2000 mL	50 mL	132x183.5 mm	4
CBH013	3000 mL	500 mL	158x201 mm	2
CBH014	5000 mL	500 mL	188.5x229 mm	2

## STACKABLE JUG, TALL SHAPE

10%

ENDO  
plasticwareAUTO  
+120°

- Manufactured in PP.
- Raised graduation markings. Thick walls and high chemical resistance.

Code	Cap.	d.	h.
CCB021	250 mL	75 mm	115 mm
CCB022	500 mL	100 mm	137 mm
CCB023	1000 mL	125 mm	167 mm
CCB024	2000 mL	150 mm	217 mm
CCB025	3000 mL	170 mm	244 mm

## STAINLESS STEEL JUG WITH RIM AND SPOUT

15%

ENDO  
metalware

- With curved rim and resistant to chemical agents.

Code	Capacity	Dim. (hxØ)
CCG008	250 mL	85x70 mm
CCG009	500 mL	132x85 mm
CCG010	1000 mL	148x102 mm
CCG011	2000 mL	180x132 mm
CCG012	3000 mL	180x160 mm
CCG014	4000 mL	200x200 mm
CCG013	5000 mL	210x180 mm

## ERLENMEYER FLASK, NARROW NECK

HASTA  
10  
%

GLASSCO

ISO  
1773BORO  
3.3

Code	Cap.	Ø base	Ø neck	H.	Lot
CDB094	50 mL	51 mm	22 mm	90 mm	10
CDB095	100 mL	64 mm	22 mm	105 mm	10
CDB083	250 mL	85 mm	34 mm	145 mm	10
CDB084	500 mL	105 mm	34 mm	180 mm	10
CDB085	1000 mL	131 mm	42 mm	220 mm	10
CDB086	2000 mL	166 mm	50 mm	280 mm	6
CDB087	5000 mL	220 mm	50 mm	365 mm	-

## ISO BOTTLE BLUE CAP

5%

ENDO  
glasswareISO  
4796-1BORO  
3.3

- Pouring ring and blue PP cap (sterilizable up to 140°C). GL45 screw cap.

Code	Cap.	d.	h.	Lot
CFB077	100 mL	56 mm	105 mm	10
CFB078	250 mL	70 mm	143 mm	8
CFB079	500 mL	86 mm	182 mm	6
CFB080	1000 mL	101 mm	203 mm	4

## WIDE MOUTH WASH BOTTLE LABELED

5%

ENDO  
plasticware

- Washing bottle made of LDPE. The bottle printing includes the CAS number (Chemical Abstract Service), NFPA (National Fire Protection Association) codes and symbols, personal protective equipment symbols, and hazard statements.

Code	Cap.	GL	Printing	Cap
CKB016	250 mL	45	Methanol	38 mm
CKB017	250 mL	45	Ethanol	38 mm
CKB018	250 mL	45	Isopropanol	38 mm
CKB019	250 mL	45	Acetone	38 mm
CKB020	250 mL	45	Distilled water	38 mm

DOUBLE GRADUATION PP

15%



Code	Cap. mL	h. mm	Lot
DBJ041	10	130	10
DBJ042	25	148	10
DBJ043	50	169	10
DBJ044	100	250	10
DBJ045	250	295	6
DBJ046	500	350	6
DBJ047	1000	410	4

MEASURING CYLINDERS TALL FORM PMP

5%



ISO 6706

DIN 12681

■ Blue graduation. With pouring spout.

Code	Cap.	Tol. mL	H. mm	Lot
DBJ048	10 mL	±0.2	145	10
DBJ049	25 mL	±0.5	170	10
DBJ050	50 mL	±1.0	200	10
DBJ051	100 mL	±1.0	250	10
DBJ052	250 mL	±2.0	325	6

VOLUMETRIC FLASK WITHOUT STOPPER

25%

TAKE ADVANTAGE OF A  
**25%**  
DISCOUNT



BORO 3.3



- White scale. Individual certificate included in the box.
- The top of the funnel includes a pouring spout.

Code	Cap.	Range mL	Ø mm	H. mm
DDJ022	750 mL	740-760	31	370
DDJ023	375 mL	364-385	23,5	325
DDJ024	1500 mL	1450-1550	35,5	455

PIPETTE FOR WINE STRAIGHT

15%

BORO 3.3



Code - DLD009

Code - DLD007\_8

Code - DLD002\_5



Code	Length	Diameter	Type
DLD007	50 cm	30 mm	Straight
DLD008	65 cm	30 mm	Straight
DLD009*	77 mm	30 mm	Straight
DLD002	25 cm	20-22 mm	Curved
DLD003	35 cm	20-22 mm	Curved
DLD004	45 cm	20-22 mm	Curved
DLD005	65 cm	20-22 mm	Curved

\* with rubber

1 MARK, CLASS AS, VOLUMETRIC PIPETTE

30%

TAKE ADVANTAGE OF A  
**30%**  
DISCOUNT



ISO 648

- With color band (according to ISO 1769 standard).
- Complies with USP (United States Pharmacopeia) standard.



Code	Capacity	Tolerance	Band	Lot
DJD017	0.5 mL	±0.006 mL	●	5
DJD018	1 mL	±0.006 mL	●	5
DJD019	2 mL	±0.006 mL	●	5
DJD020	3 mL	±0.010 mL	●	5
DJD021	5 mL	±0.010 mL	○	5
DJD022	10 mL	±0.020 mL	●	5
DJD023	15 mL	±0.030 mL	●	5
DJD024	20 mL	±0.030 mL	●	5
DJD025	25 mL	±0.030 mL	●	5
DJD026	30 mL	±0.030 mL	●	5
DJD027	40 mL	±0.050 mL	○	5
DJD028	50 mL	±0.050 mL	●	5
DJD029	100 mL	±0.080 mL	●	5

## LOW SPEED CENTRIFUGE DM0436E

15%



DUAB



<b>Code</b>	GBF016
<b>Capacity de rotor</b>	12 x 15 mL + 12 x 10 mL
<b>Timer (min)</b>	30 s-99 min 59 s / Continuous
<b>Speed range (rpm)</b>	100-3500 (increments of 100)
<b>Maximum RCF (×g)</b>	2260
<b>Approx. dimensions (mm)</b>	482 x 414 x 254

## CENTRIFUGE MINI

10%

nahita  
blue

<b>Code</b>	GDC008	GDC001	GDC002	GDC009
<b>Model</b>	2507/4	2507/7	2507/11	2507/30
<b>Speed</b>	4000rpm ±3%	7000rpm ±3%	10000rpm ±3%	12000rpm ±5%
<b>Max RCF</b>	990 ×g	2910 ×g	5610 ×g	8550 ×g
<b>Dimension</b>	155×168×118 mm			

\* check available heads

## MICROPLATE CENTRIFUGE, MODEL P-X

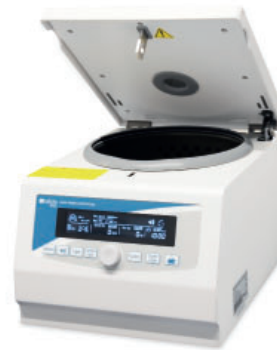
15%

nahita  
blue

<b>Code</b>	GDC011
<b>Speed range (RPM)</b>	300-3000 (± 15 rpm)
<b>Max. RCF</b>	608
<b>Timer</b>	1-99 min. / 1-59 sec.
<b>Capacity</b>	2× 96-well microplates / ELISA plates
<b>Dimensions (LxAxH) (mm)</b>	225x255x215

## HIGH SPEED CENTRIFUGE 2624/2

10%

nahita  
blue

<b>Code</b>	GLC005
<b>Speed range (RPM)</b>	100-15000 (increment of 10 rpm)
<b>Max. RCF</b>	21180 (10 ×g increment)
<b>Timer</b>	1-99 min. / 1-59 sec.
<b>Max. capacity</b>	50 mL
<b>Dimensions (LxAxH) (mm)</b>	280x360x250

\* check available heads

## MEDIBAS+ CENTRIFUGE MOD. 2742

15%



YouTube

nahita  
blue

## ROTOR AND TUBE HOLDERS (INCLUDED)



Ref. GLK014



Ref. GLK005



Ref. GNP005



Ref. GLK002

<b>Code</b>	GLC008
<b>Max. capacity</b>	400 mL (50mL x 8)
<b>Timer</b>	1-99 h. / 1-59 min. / 1-59 sec.
<b>Speed max. (rpm)</b>	100-6000
<b>Max. RCF</b>	5150 ×g (10 ×g increment)
<b>Dimensions (mm)</b>	390×500×320

\* check available heads

MODEL 2811R HIGH SPEED REFRIGERATED CENTRIFUGE

15%



<b>Code</b>	GLF003
<b>Speed range (RPM)</b>	200-16000 (increment of 10 rpm)
<b>Max. RCF</b>	24100(10 ×g increment)
<b>Timer</b>	1-99 h. / 1-59 min. / 1-59 sec.
<b>Temperature range</b>	-20 °C / +40 °C
<b>Minimum temperature at max. speed</b>	0 °C
<b>Maximum capacity</b>	400 mL (100 mL x 4)
<b>Dimensions (LxAxH) (mm)</b>	493x584x345

\* check available heads

MEDIBAS+ LOW SPEED REFRIGERATED CENTRIFUGE

10%



<b>Code</b>	GNF001
<b>Speed</b>	100~6000 rpm (increment of 10 rpm)
<b>Max RCF</b>	5150 ×g (increment of 10×g)
<b>Timer</b>	1-99 h/1-59 min/1-59 s.
<b>Temperature range</b>	-20 °C~+40 °C
<b>Min. temperature at max. speed</b>	0 °C
<b>Max. capacity</b>	400 mL (50 mL x 8)
<b>Dimensions</b>	634 × 548 × 335 mm

\* check available heads

PROFESSIONAL BINOCULAR MICROSCOPE

12%



<b>Code</b>	HBC025	HBC026
<b>Head</b>	Binocular	Triocular
	Rotatable 360° and inclined 30°	
<b>Eyepieces</b>	WF10x/22 (wide field)	
<b>Revolver</b>	Quadruple	
<b>Objectives</b>	Plan achromatic, infinity-corrected objectives 4x; 10x; 40 (R); 100x (R)(I)	
<b>Stage</b>	Double graduated stage, 185 × 142 mm	
<b>Condenser</b>	Abbe N.A.1.25	
<b>Focus</b>	Coaxial coarse/fine focus controls	
<b>Illumination</b>	Köhler; LED 5W	
<b>Dimensions</b>	380x275x430 mm	

HDMI MICROSCOPE CAMERA

20%



Code:  
HGB008



Code:  
HGB009



- C-mount CMOS cameras.
- Code HGB009 includes the TouView application for smartphones or tablets.

<b>Code</b>	HGB008	HGB009
<b>Connections</b>	HDMI (Direct display) WIFI (USB adapter) Ethernet (LAN)	USB (Computer cable) WIFI (AP) (STA)(LAN) Ethernet (LAN)
<b>Sensor and size (mm)</b>	1080P/2MP/Sony IMX185(C) 1/1,9"(7,20x4,05)	4MP/Sony IMX347(C) 1/1,8"(7,8x4,38)
<b>FPS / max. resolution</b>	30/1920x1080 (HDMI) 25/1920x1080 (RED)	30/2688x1512 (USB) 30/2688x1512 (RED)
<b>Exposure (ms)</b>	0,06 - 918	0,021 - 1000
<b>Software</b>	XCamView	XCamView
<b>Output</b>	Type C thread	Type C thread

SPLIT BEAM UV/VIS SPECTROPHOTOMETER

10%



- **Working mode:** photometry, quantification, spectrum, kinetics, time scan, multi-wavelength, DNA/protein, and customized.
- **Software:** the equipment includes UVStudio software. Optional UVStudio GLP/GMP for access to the user management module.

<b>Code</b>	HJD015
<b>Optical system</b>	Split beam, 1200 lines/mm grating
<b>Wavelength range</b>	190-1100 nm
<b>Bandwidth</b>	2 nm
<b>Light source</b>	Xenon flash lamp
<b>Photometric range</b>	-0,3-3 A; 0-200% T; 0-9999,9 C

VISIBLE SPECTROPHOTOMETER

10%



- **Working mode:** photometry, quantification, and scanning.
- **Software:** the equipment includes EasyUV Basic software. Optional EasyUV.

<b>Code</b>	HJB007
<b>Optical system</b>	Split beam, 1200 lines/mm grating
<b>Wavelength range</b>	320-1100 nm
<b>Bandwidth</b>	4 nm
<b>Light source</b>	Tungsteno
<b>Photometric range</b>	-0.3~3 A / 0~200 %T / 0~9999.9 C

SPECTROPHOTOMETER UV-VIS

15%



- **Working mode:** photometry and quantification.
- **Software:** the equipment includes EasyUV Basic software.

<b>Code</b>	HJD017
<b>Optical system</b>	Single beam, 1200 lines/mm grating
<b>Wavelength range</b>	200-1050 nm
<b>Bandwidth</b>	4 nm
<b>Light source</b>	Tungsteno and deuterio
<b>Photometric range</b>	-0,3-3 A; 0-200% T; 0-999.9 C

CUVETTE

15%




	Code	Description	Cap.	Lot
optical PS	HJM004	Macro	4.5 mL	10
	HJM005	Semi-micro	1.5 mL	10
	HJM007	Semi-micro	2.5 mL	10
	HJM010	4 optical faces	4.5 mL	10
PMMA	HJM006	Macro	4.5 mL	10
	HJM008	Semi-micro	2.5 mL	10
	HJM009	Semi-micro	1.5 mL	10
	HJM011	4 optical faces	4.5 mL	10


THERMOBLOCK MODEL 705

13%





High thermal precision



Simple and intuitive use

<b>Code</b>	JDS010
<b>Capacity</b>	6x15 mL
<b>Temperature range</b>	Ambient 100°C
<b>Timer</b>	1-999 sec or 1-999 min
<b>Sensor</b>	PT100
<b>Approx. dimensions</b>	140x115x210 mm

CO2 INCUBATOR

15%



<b>Code</b>	JBB020
<b>Temperature range</b>	RT+5°C - 60°C
<b>Temperature resolution</b>	0,1°C
<b>Chamber volume</b>	50 L
<b>Chamber and trays material</b>	Stainless steel

HEATING MANTLE WITH STIRRING

10%



<b>Code</b>	JGB009	JGB010
<b>Model</b>	Analog	Digital
<b>Capacity</b>		20 L
<b>Maximum temperature</b>		380°C
<b>Consumption</b>		2,5 kW

ANALYTICAL BALANCE

12%



<b>Code (ext. calibration)</b>	KBF010	KBF011	KBF012
<b>Code (int. calibration)</b>	KBF013	KBF014	KBF015
<b>Capacity (g)</b>	120	320	520
<b>Readability (mg)</b>		0,1	
<b>Units</b>		g/oz/ct/mg	
<b>Repeatability (mg)</b>	±0,1	±0,2	±0,2
<b>Linearity (mg)</b>	±0,2	±0,3	±0,3
<b>Interface</b>		RS232/USB	
<b>Pan size (mm)</b>		Ø 90	

PRECISION BALANCE

10%



<b>Code (ext. calibration)</b>	KBD021	KBD023
<b>Code (int. calibration)</b>	KBD022	KBD024
<b>Capacity (g)</b>	0-520	0-1000
<b>Readability (g)</b>	0.001	
<b>Units/Functions</b>	g/ct/oz/mg	
<b>Repeatability / Linearity (g)</b>	± 0.002	
<b>Pan size (mm)</b>	Ø 90	

PP WATCH GLASSES

20%



- Without graduation. Approximate thickness: 1 mm.
- With a support base that prevents rotation.
- Withstand temperatures up to +120°C.

<b>Code</b>	<b>Ø (mm)</b>	<b>Lot</b>
KBN070	60	10
KBN071	80	10
KBN072	100	10
KBN073	120	10

BENCHTOP PH METER PH820

5%



YouTube

APERA INSTRUMENTS

<b>Code</b>	KDD009
<b>Parameters</b>	pH/mV/°C
<b>pH</b>	
Range	-2.000 – 19.999 pH
Resolution	0.1/0.01/0.001 pH
Accuracy	±0.002 pH ± 1 digit
Calibration	up to 5 automatic points
<b>mV</b>	
Range	± 1999 mV
Resolution	1 mV
Accuracy	±0.1 % FS ± 1 digit
<b>Temperature</b>	0 – 100°C

ELECTRODE STAND

15%



Nahita

Multifunction head

360° articulated arm

<b>Code</b>	KDG001
<b>Dim. (folded)</b>	190x120x210 mm
<b>Ø Holes</b>	1 de 13.5 mm, 2 de 13 mm, 2 de 12 mm, 1 de 7mm

MULTIPARAMETER ANALYZER

7%



APERA INSTRUMENTS

<b>Code</b>	KZD005
<b>Parameters</b>	pH/EC/°C
<b>Conductivity</b>	
Range	0-200.0 μS/cm; 0-2000 μS/cm 0-20.00 mS/cm; 0-50.0°C
<b>Resolution / Accuracy</b>	0.1/1 μS, 0.01 mS / ±1%Fs
<b>Calibration</b>	1 to 3 points
<b>Temperature coefficient</b>	0.00 to 4.00% / °C
<b>pH</b>	
Range	-2.00 - 16.00 pH
<b>Resolution / Accuracy</b>	0.01 pH - ±0.01 pH
<b>Calibration</b>	1 to 3 points
<b>Salinity</b>	0 to 10.00 ppt

BENCHTOP CONDUCTIMETER EC820

7%



APERA INSTRUMENTS

<b>Code</b>	KGD006
<b>Parameters</b>	Cond/TDS/Sal/°C
<b>Conduc. Range</b>	0.00-19.99 μS/cm; 20.0-199.9 μS/cm; 200-1999 μS/cm, 2-19.99 mS/cm; 20-199.9 mS/cm; 200-1999 mS/cm
<b>TDS range</b>	0.1 mg/L – 100 g/L (500 g/L S9500)
<b>Salinity</b>	0 – 100 ppt

PORTABLE METER

10%



Advanced technology



Storage capacity

APERA INSTRUMENTS

<b>Code</b>	KZD032	KZD035	KZD034
<b>Model</b>	SX751	SX723	SX725
<b>Parameters</b>	pH/mV/ORP/DO Cond/TDS/Sal/Res	pH/mV/Cond/ TDS/Sal/Res	pH/mV/DO
<b>pH</b>	Range -2.00 to 19.99pH		
<b>Conductivity</b>	Range 0.00 to 19.99 μS/cm; 20.0 to 199.9 μS/cm 200 to 1999 mS/cm; 2.00 to 19.99 mS/cm 20.0 to 199.9 mS/cm		

## ANALOGICAL STIRRER WITH HEATING

10%



RS Lab



Code	LBB003
Speed range	0-1500 rpm
Maximum stirring volume	20 L
Temperature range	Ambient - 340°C
Plate material	Ceramic coating
Plate diameter	ø 135 mm
Approx. dimensions	280 x 160 x 85 mm

## DIGITAL STIRRER WITH HEATING

15%



RS Lab



Code	LBD005
Plate material	Metallic ceramic coating
Display	LED
Speed range	200 - 1500 rpm
Temperature range	Ambient - 280°C
Maximum volume	3 L
Plate diameter	ø 135 mm
Approx. dimensions	260 x 150 x 80 mm

## DIGITAL STIRRER WITH HEATING MANTLE FOR BOTTOM-ROUND FLASKS

15%



RS Lab

Advanced  
safetyPrecise and  
uniform heatingDurability and low  
maintenance

Code	LBD011	LBD012	LBD013	LBD014
Capacity (round-bottom flasks)	100 mL	250 mL	500 mL	1000 mL
Ø int.	73 mm	90 mm	119 mm	145 mm
Speed range	200-1500 rpm			
Temperature range	25-280 °C			
External temperature sensor	PT100 (accuracy ± 0,1°C)			
Protection rating	IP21			

MULTI-POSITION HOTPLATE  
MAGNETIC STIRRER

10%



RS Lab



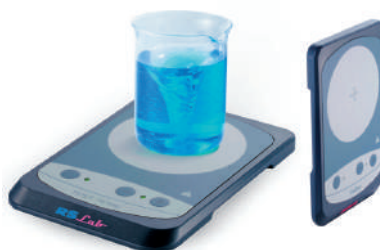
Code	LBD023
Maximum stirring capacity (H <sub>2</sub> O)	40 L (10 L x 4)
Pan size	ø 135 mm
Display	LCD
Speed range	200-1500 rpm
Temperature range	25-340°C
Dimensions (LxAxH)	698 x 270 x 128 mm

## ULTRA-FLAT MAGNETIC STIRRER

10%



RS Lab



Code	LBG004
Speed range	15-1500 rpm
Maximum stirring volume	0,80 L
Maximum stirring weight	2 kg
Operation indicator	Yes
Plate diameter	ø 90 mm
Dimensions (LxAxH)	175 x 120 x 15 mm

## ROTARY TUBE STIRRER

20%




<b>Code</b>	LJG006	LJG008
<b>Type</b>	Disc	Grill plate
<b>Speed</b>	20-80 rpm	
<b>Angle</b>	40°-80°	-
<b>Cap. (mL)</b>	8x50 - 16x15 - 24x1.5/2	4x50 - 10x15 - 8x1.5/2
<b>Dimensions</b>	230x180x265 mm	425x100x125 mm

## MULTI-POSITION MAGNETIC STIRRER

10%




<b>Code</b>	LBJ003	LBJ004
<b>Number of positions</b>	9	15
<b>Work plate material</b>	Corrosion-resistant PET plate	
<b>Maximum stirring capacity</b>	9x500 mL	15x250 mL
<b>Stirring direction</b>	Counterclockwise direction	
<b>Speed</b>	50-1500 rpm	
<b>Stirring rod size</b>	30 mm	
<b>Dimensions</b>	435x330x85 mm	576x330x63 mm

## DIGITAL VORTEX MIXER WITH SENSOR MODEL 710

10%



### ACCESSORIES (INCLUDED)



Code LGG030



Code LGG031



Code LGG032

- Two operating modes: touch and continuous.
- Equipped with an IR sensor to activate/deactivate operation.

<b>Code</b>	LGB007
<b>Motor</b>	DC24V/1.5A
<b>Speed range</b>	200-3000rpm ± 5%
<b>Circumference diameter</b>	4.5mm
<b>Display</b>	LCD
<b>Sensor</b>	IR

## DIGITAL OVERHEAD STIRRER

20%




<b>Code</b>	LLB008
<b>Speed range</b>	100-1200 rpm (± 10 rpm)
<b>Time</b>	0-24 h
<b>Maximum capacity</b>	5 L
<b>Maximum viscosity</b>	5000 mPas
<b>Dimensions</b>	134x70x173 mm

## BOTTLE TOP DISPENSER ACCUDOSE DUAL

20%




<b>Code</b>	<b>Vol. mL</b>	<b>Increments</b>
MDD085	0.25-2.5	0.05 mL
MDD086	0.5-5	0.1 mL
MDD087	1-10	0.2 mL
MDD088	2.5-30	0.5 mL
MDD089	5-60	1.0 mL

MONOCHANNEL DIGIPETTE PREMIUM MICROPIPETTE

5%



DIGIPETTE



Code - MGB095

- Precise volume adjustment with built-in locking system.
- Universal tip compatibility.

Code	Volume $\mu\text{L}$	Increm. $\mu\text{L}$
MGB088	0.1-2.5	0.002
MGB089	0.5-10	0.02
MGB090	2-20	0.02
MGB091	5-50	0.1
MGB092	10-100	0.1
MGB093	20-200	0.2
MGB094	100-1000	1
<b>MACROPIPETTE</b>		
MGB095	500-5000	10
MGB096	1000-10000	20

MICROPIPETTE ULTRALITE

20%



DIGIPETTE



Code	Volume ( $\mu\text{L}$ )	Increments ( $\mu\text{L}$ )
<b>8 channels</b>		
MGG040	0.5-10	0.01
MGG041	2-20	0.02
MGG042	5-50	0.04
MGG043	10-100	0.20
MGG044	20-200	0.20
MGG045	40-300	0.40
<b>12 channels</b>		
MGG046	0.5-10	0.01
MGG047	2-20	0.02
MGG048	5-50	0.04
MGG049	10-100	0.20
MGG050	20-200	0.20
MGG051	40-300	0.40

MICROPIPETTE ULTRALITE MINI

15%



DIGIPETTE



- Optimal size for greater comfort, 130 mm in length.
- With tip ejector. Autoclavable.

Code	Volume ( $\mu\text{L}$ )
MGD111	5
MGD112	10
MGD113	20
MGD114	25
MGD115	50
MGD116	100
MGD117	200

CT SERIES PERISTALTIC PUMP

12%



Nehita



Code	MPD003
Maximum speed	600 rpm
Speed resolution	0,1 rpm
Maximum flow	2280 ml/min
Suction angle	10°-720°
Suction speed	10-300 rpm
Protection class	IP31
Dimensions (LxAxH)	290x200x255 mm

WATER PURIFICATION SYSTEM

7%



HYDROLAB

Code	PDB006	PDB006.40
Power supply	mains water	
Dimensions	200x370x430 mm	
Purified water production capacity	4 L/h	
Purified water conductivity	< 0,06 $\mu$ S/cm	
Alerts	monitoring messages/alarms	
Cartridges	interchangeable and easy replacement	
Pressure gauge	for inlet water	
Storage tank	10L (purified water)	40L (purified water)

VACUUM MANIFOLD KIT

15%



Nahita

Code	Positions	Capacity
PJB018	1 Position	300 mL
PJB021	1 Position	500 mL
PJB019	3 Positions	300 mL
PJB022	3 Positions	500 mL
PJB020	6 Positions	300 mL
PJB023	6 Positions	600 mL

FILTER STANDARD

10%



FILTRES



YouTube

■ Application in pharmaceutical and agri-food industries, healthcare, education, and research.

Code	Ø	Pack
PSB002	70 mm	100
PSB003	90 mm	100
PSB004	100 mm	100
PSB006	150 mm	100
PSB008	190 mm	100
PSB009	250 mm	100
PSB015	100 mm	100
PSB016	130 mm	100
PSB017	150 mm	100
PSB018	190 mm	100
PSB019	250 mm	100
PSB020	330 mm	100

VACUUM PUMP

10%

Nahita



Code  
PXB011

Code  
PXB010

Code	PXB010	PXB011
Vacuum pressure	up to 200 mbar	up to 50 mbar
Flow rate	20 L/min	30 L/min
Pump heads	1	2
Noise level	<50dB	<50dB
Temperature	7-40°C	

ROUND ULTRASONIC BATH WITH HEATING

7%



Code	ZCC031	ZCC032	ZCC033
Tank dimensions mm	Ø300x220	Ø350x240	Ø450x280
Volume	15 L	22 L	44 L
Ultrasonic power	360 W	480 W	900 W
Heating power	400 W	600 W	1000 W
Frequency	28/40 kHz		
Time	1-99 min		
Temperature	0-80 °C		

**AUTOClave STERILIZATION TAPE**

**20%**



**Nahita**

- Lead-free with proper storage.

Code	Length	Width	Lot
ZCM008	50 m	19 mm	8

**SELF-SEALING STERILIZATION POUCHES**

**15%**



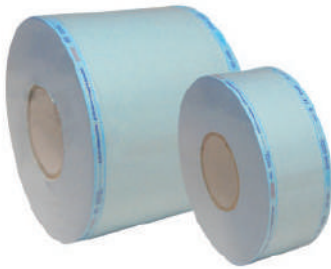
**ENDO**  
plasticware

- Hermetically sealed with a self-adhesive strip.

Code	Dimensions	Box
ZCM009	90x165 mm	200
ZCM010	90x260 mm	200
ZCM011	135x260 mm	200
ZCM012	190x360 mm	200

**PAPER REEL TO STERILIZE**

**10%**



**ENDO**  
plasticware

- Roll with paper base and plastic film.
- For sterilizing various materials.
- With sterilization indicator and color change on the sides.

Code	Dimensions	Lot
ZCM015	150 mm x 200 m	4
ZCM016	200 mm x 200 m	2
ZCM017	250 mm x 200 m	2

**PADDLE BLENDER**

**12%**



**YouTube**

Code	ZHB002
Capacity	3 - 400 mL
Timer	1 sec - 100 hours
Blade speed	3 - 12 strokes/sec
Blade distance	0 - 50 mm
Bag size	17 x 30 cm
Ambient temperature	0 - 35 °C
Dimensions	420 x 230 x 330 mm

**ANALOGUE HOMOGENISER**

**12%**



**YouTube**



**Nahita**



Code	ZHB005	ZHB006
Speed range	5000-35000 rpm	8000-30000 rpm
Speed adjustment	Uniform, 6 speed levels	
Total capacity	0.5-250 mL	150-10.000 mL
Blade material	Stainless steel 316	

**STERILIZED BAG SEALING MACHINE WITH ROLLER HOLDER**

**10%**



**Nahita**

Code	ZZC003
Sealing width	15 mm
Maximum sealing length	300 mm
Maximum plastic thickness	0.4 mm
Dimensions	370x310x180 mm

\* Roll not included