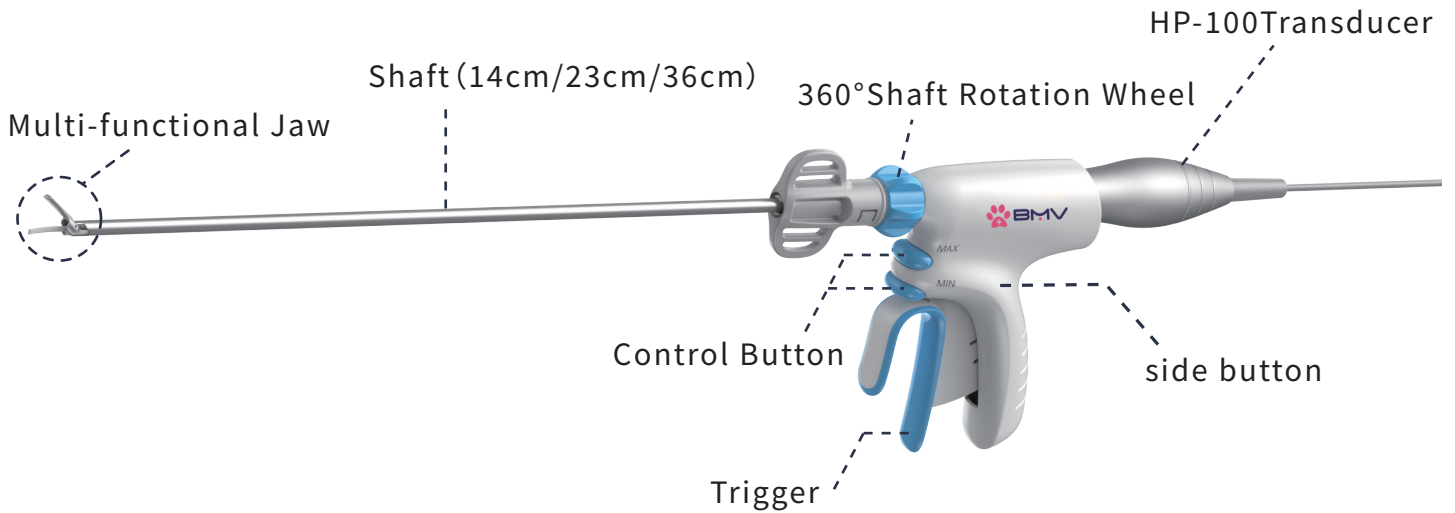




AniSurg™ BUS-38 PRO HIGH PERFORMANCE VETERINARY ULTRASONIC SCALPEL SYSTEM

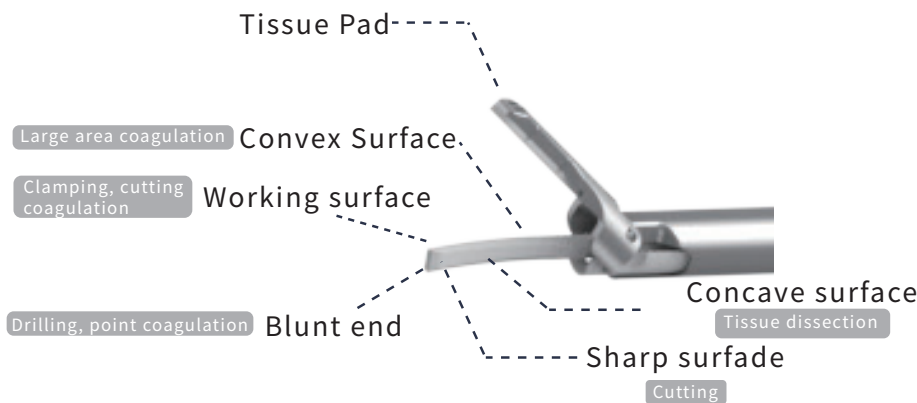


Product Detail Description



MAX Key: for the cutting and coagulation of vessels up to 3mm

MIN Key: for the cutting and coagulation of vessels up to 5mm



HP-100 transducer
High-Performance Piezoelectric Ceramic Chip
Stable longitudinal vibrations output

Tissue Pad: Made of PTFE, passed the biocompatibility test. Extremely dense serrated structure with serrations less than 0.5mm apart, providing greater grip and avoiding disengagement from the jaw during tissue cutting.



Advantages of Ruisu-vet Ultrasonic Scalpel

Continuous Upgrading

Independent R&D team to ensure that the product software and hardware can be continuously upgraded and iterated

Functionality

Strong Anti-adhesion

Low operating temperatures, no eschar or carbonization.

Adjustable operating Speed

Low lateral thermal damage, with five adjustable cutting speeds.

Clear Vision

Curved jaw design with larger viewing area; less smoke during surgery, guaranteeing the surgeon to obtain the best surgical field of view.

Stable and Reliable

No current through the animal, outputting energy stably and coagulating blood vessels under 5mm (including 5mm) safely.

High Flexibility

360° operating angle, adjustable and flexible.

High Safety

The range of thermal damage is less than 1.5mm (data measured from the slices), reducing damage of surrounding tissues.

Easy to Care

The diameter of the blade is only 5.5mm, minimally invasive surgery with small incisions and quick recovery after surgery. Less pain for pets, easier care for owners.

Compact and Lightweight

Designed by a professional team, weighing only 2.85KG and occupying little surgical space.



Safe and Reliable
to operate



Precise Cutting with
Adjustable Levels



Easy and Efficient
to Use



Self-developed
Software Algorithms

Clinical Application of Products

Veterinary ultrasonic scalpel is suitable for
95%
of veterinary surgeries

- Hepatobiliary Surgery
- Thoracic Surgery
- Gastrointestinal Surgery
- Minimally Invasive Surgery
- Ophthalmic Surgery and ENT Surgery
- Sterilization Surgery
- Head and Neck Surgery
- Breast Surgery
- Urinary Surgery

Product Innovation: Original Algorithm

Independently developed and organized adaptive algorithms, using frequency tracking technology to automatically adjust the output energy in real-time during the cutting process, ensuring the best cutting and coagulation effect.



Thyroidectomy Area



Thyroidectomy Specimen



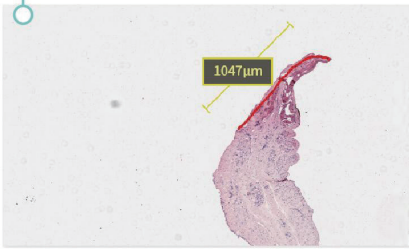
Recovery of the Resection Area 28 Days after Surgery

Well healing without infection, bleeding or hematoma

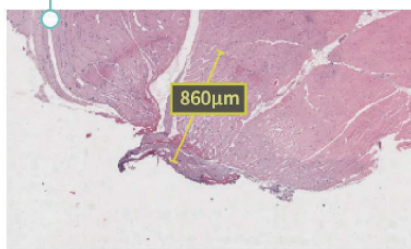
Ultra-low Thermal Damage

The range of lateral thermal damage is less than 1.5mm , reducing damage of surrounding tissues

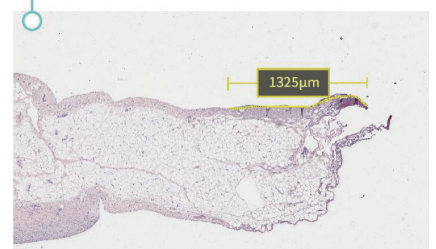
Section of the mesometrium (1047 μ m)



Section of the muscle (860 μ m)



Section of the mesostenium (1325 μ m)



*Lateral thermal damage:

The distance from the farthest position of tissue degeneration to the cutting endface. For blood vessels, lateral thermal damage is the distance along the edge of the tissue, For non-vascular tissue, lateral thermal damage is the linear distance.

Animal Experiments



Instrument Parameters



Electric shock protection grade	CF-type components
Types of electric shock protection	Class I equipment
Main power input	Voltage:220V Frequency:50Hz Power:200VA
Output	Voltage: 200VAC(peak) Power: 45 W (peak) Frequency: 55.5 khz
Operating conditions	Temperature:-10°C to 30°C Humidity: 30-70%,no condensation Atmospheric pressure range: 70KPa-106KPa
Transportation and storage conditions	The products should be prevented from heavy pressure, collision,di-rect sunlight and snow and rain,and should be stored in a dry,clean,non-corrosive gas and well ventilated room. Temperature:-20°Cto+55°C Humidity: 10-93%, no condensation Atmospheric pressure range: 70KPa-106KPa
Weight	4.0Kg
Dimensions	575mm x410mm x250mm

Equipment	Components	Specification	Quantity
Ultrasonic Scalpel	Generator	UG-100	1
	Shaft*	US-14	2
		US-23	1
	Transducer*	HP-100	1

Components with “*” can be purchased separately as needed

