



Botanics

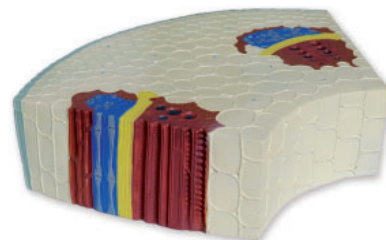
Code QBG001, QBG002, QBG003, QBG005, QBG006, QBG007

- Aimed at the study of the most interesting plan structures in educational purposes.

Dicotyledon stem

Code QBG001

- Cross and longitudinal section of the root.
- It shows the vascular bundles (xylem, phloem, procambium), the cortex and the parenchyma (medullary and interfascicular) as well as outer epidermis.
- Made of PVC.



Code	Parts	Magnifications
QBG001	1	125x

Root tip longitudinal section

Code QBG002

- Longitudinal section of root that shows its internal and external morphology.
- Represents division zones (calyptra and apical meristem) elongation and differentiation (apical hair).
- Made of PVC.



Code	Parts	Magnifications
QBG002	1	100x

Peach blossom

Code QBG003

- The model represents the essentials parts of a flower: receptacle, calyx, corolla, stamens, filament and pistils.
- Supplied with a baseboard.



Code	Parts	Magnifications
QBG002	1	100x



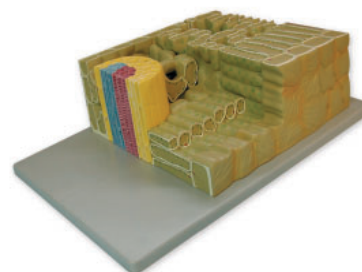
Botanics

Code QBG001, QBG002, QBG003, QBG005, QBG006, QBG007

Leaf section

Code QBG005

- With six numbered parts, they are represented the upper epidermis, palisade mesophyll, vascular tissue, spongy mesophyll, lower epidermis and stoma.
- Supplied with a baseboard.
- Cross and longitudinal section of the leaf.



Code	Parts	Magnifications
QBG005	1	700x

Vascular bundle

Code QBG006

- The model shows the structure of conducting bundles with great detail in which nine numbered parts can be distinguished: parenchyma, xylem, phloem, cambium, fiber, etc.
- Supplied with a baseboard.
- Cross and longitudinal section of the vascular bundles.

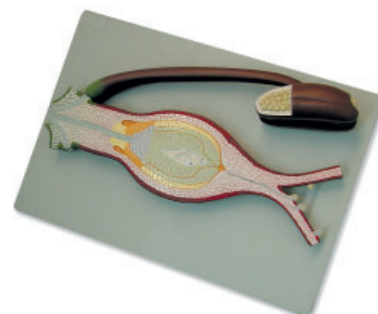


Code	Parts	Magnifications
QBG006	1	550x

Fertilization of angiosperm

Code QBG007

- This model shows the fertile parts of a flowering plant (carpel and Stamen) for the study of seed plants.
- Supplied with a baseboard.



Code	Parts	Magnifications
QBG007	1	300x