



Bossheads

Laboratory bossheads are used to other lab pieces such as retort rings, clamps, rods, etc. to support frames.

Made of metal and very durable, Nahita laboratory bossheads are available in different models and sizes to adapt to any necessity

Double bossheads

FCP001, FCP002, FCP003, FCP004, FCP005, FCP006, FCP007, FCP008, FCP009

- Metallic and available in different sizes and colours the allow assembling pieces in right angle.
- With adjusting wheels made of plastic.
- Allow instrumentation to be mounted at a 90° angle



Code	Description	Length (mm)	Rods up to (mm)
FCP001	Painted small	53	13
FCP002	Painted medium	70	16
FCP003	Painted large	84	21
FCP004	Painted extra large	97	25
FCP005	Zinc plated small	53	13
FCP006	Zinc plated medium	70	16
FCP007	Zinc plated large	84	21
FCP008	Zinc plated extra large	97	25
FCP009	Zinc plated rounded	53	14



Double, resin coated

FCP010

Code	Rods up to (mm)
FCP010	16

Double rotary

FCP011, FCP012



Code	Rods up to (mm)
FCP011	20/13
FCP012	18



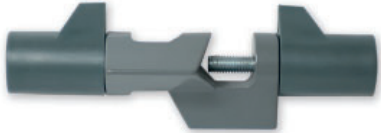
Bossheads

Laboratory bossheads are used to other lab pieces such as retort rings, clamps, rods, etc. to support frames.

Made of metal and very durable, Nahita laboratory bossheads are available in different models and sizes to adapt to any necessity

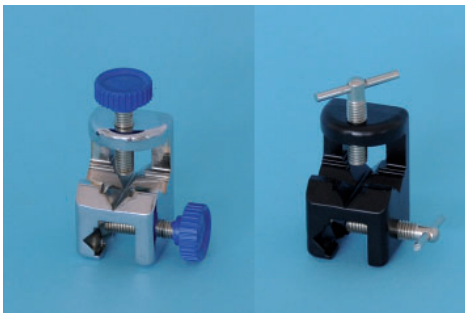
Bosshead model Phywe

FCP013



- Metallic and large, its strong format is ideal for heavy loads.
- To hold two rods up to 24 mm diameter at a right angle

Code	Colour	Length (mm)	Rods up to (mm)
FCP013	Grey	170	24



Universal bossheads

FCP014, FCP015

- Metallic and very robust they allow cross, parallel and "T" arrangements.
- The wheels to adjust the screw are made of plastic.

Code	Colour	Length (mm)	Rods up to (mm)
FCP014	Chrome plated	55	16
FCP015	Painted	55	16

Bossheads for laboratory frameworks

FCP017, FCP016, FCP018, FCP019, FCP020



- Bossheads type P allow the assembly of two rods in right angle while the Trevin bosshead can be used to mount multiple supports in three different angles.
- Both types present hexagonal hollow screw for Allen wrenches

Code	Model	Rods up to (mm)
FCP017	Type P	12
FCP016	Type P	10
FCP018	Type P	14
FCP019	Type P	16
FCP020	Trevin	9-13