

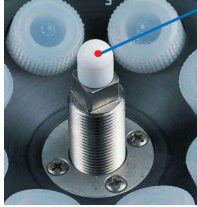


MICROPROCESSOR CONTROLLED CENTRIFUGES “Centromix BLT”, “Mixtassel BLT”, “Centronic BLT” and “Centrofriger BLT”

COMMON FEATURES

Robust all metal construction:

- External case made from DUR-AL alloy.
- Internal bowl and top plate all stainless steel
- Internal steel safety chamber within the case.



Rotor identification head (only models “Centronic BLT” and “Centrofriger BLT”) when the centrifuge lid is closed the rotor communicates all the data of the functions of it. This prevents, before use, any risk of failure of using the wrong rotor in a program or exceeding the rotors running parameters. The advantage of this system is that we can add additional rotors to the range without changing the centrifuge model.

Electronic circuits, microprocessor digital control of all parameters and functions: speed, acceleration, brake, RCF, temperature, timer, 10 program storage, automatic rotor recognition and alarm system.

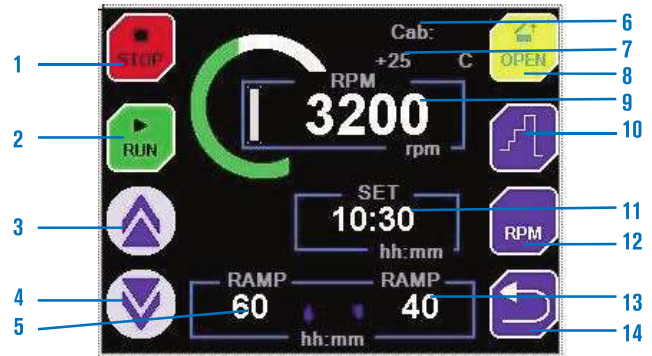
Induction drive maintenance free motor.

Low noise level 50-60 dBa.

Rotors, buckets and adapters are identified with an inalterable engraved laser code. **Air circulation system**, to limit any excessive rise in temperature within the centrifuge, all air circulated within the chamber is channelled out of the back and is not re-circulated, this means that the centrifuges internal temperature will remain low and constant.

Hermetically sealed compressor, mounted on anti-vibration mounts with re-circulating evaporator around the centrifuge chamber. (only applies to refrigerated centrifuges).

CONTROL PANEL TFT Touch screen



1. Stop process key.
2. Start process key.
3. Increase value key.
4. Decrease value key.
5. Scheduled acceleration ramp.
6. Rotor model in use.
7. Reading the real time temperature. (refrigerated models only).
8. Door opening key.
9. RPM or RCF real-time reading.
10. Sequential operation.
11. Time set-up in process.
12. Key to change RPM / RCF.
13. Braking ramp programmed.
14. Return key.



Centrifuge “Centromix BLT”

WITH A CHOICE OF ROTORS AND INTERCHANGEABLE ADAPTERS.
FREE MAINTENANCE INDUCTION DRIVE MOTOR.



HEAD AND BUCKET REDUCERS

- Reducers for bucket, Part No. 7001066:**
7001813 For 1 tube 15 ml (16,5 Ø x 100 mm).
7001814 For 1 tube 10 ml (16 Ø x 80 mm).
7001815 For 1 tube 7 ml (12 Ø x 100 mm).
7001816 For 1 tube 5 ml (12,5 Ø x 75 mm).
Reducers for bucket, Part No. 7001067:
1001557 For 1 tube 5 ml (12,5 Ø x 75 mm).
Reducers for head, Part No. 7000555:
7000700 For 1 tube 7 ml (12 Ø x 100 mm) Sheath.
1001557 For 1 tube 5 ml (12,5 Ø x 75 mm).

MODEL

Part No.	Max. Volume ml	Max. Number of tubes	Height / Width / Depth (exterior) cm	Power W	Weight Kg
7002556	120	4 x 25 ml	23 30 35	180	12

External DUR-AL case, with AISI 304 stainless steel bowl.

ACCESSORIES Rotors and interchangeable buckets and adapters.

Part No. head	Rotor type	Part No. bucket	Total max. Volume (4 adapters)	Bucket/Adapter capacity	Ø x Length mm	Max. R.p.m.	Max. R.c.f. (xg)
7000555	Angle	-	150 ml	10 x 15 ml	16,5 x 100	4400	1850
	Swing out	7001066	100 ml	1 x 25 ml	24 x 100	4400	2705
	Swing out	7001067	60 ml	1 x 15 ml	16,5 x 100	4400	2705
7001065	Swing out	7001068	28 ml	1 x 7 ml	12 x 100	4400	2705
	Swing out	7001573	40 ml	2 x 5 ml VAC	13 x 75	4400	2335
	Swing out	7001070	60 ml	VAC	16 x 100	4400	2790
	Swing out	7001072	-	undrilled	-	4400	2705



Note: All buckets and adapters come without tubes unless stated, see page 132 for tubes and accessories.



Centrifuge "MixtaseL-BLT"

MAINTENANCE FREE INDUCTION DRIVE MOTOR.

Polyvalent with rotors and interchangeable adapters

Control panel features (see page 116).



External case of DUR-AL alloy with ABS plastic coated front AISI 304 stainless steel bowl.

MODEL

Part No.	Max. Volume ml	Max. Number of tubes	Height / Width / Depth (exterior) cm	Power W	Weight Kg
7002576	400	4 x 100 ml	34 41 54	210	22

ACCESSORIES

Swing out rotor with interchangeable sealed buckets and adapters, each with identification code. Autoclavable.



Part No. head	Rotor type	Bucket open	Sealed bucket	Part No. adapter	Total max. Volume (4 adapters)	Bucket/Adapter capacity	Ø x Length mm	Max. R.p.m.	Max. R.c.f. (xg)
	Swing out	7000731	7000732	7000734	200 ml	1 x 50 ml	34 x 100	4200	4137
	Swing out	7000731	7000732	7000735	200 ml	2 x 25 ml	24 x 100	4200	4137
	Swing out	7000731	7000732	7000736	420 ml	7 x 15 ml and VAC*	16.5 x 100	4200	4137
7009079	Swing out	7000731	7000732	7001647	240 ml	6 x 10 ml	17 x 110	4200	4137
	Swing out	7000731	7000732	7000737	336 ml	12 x 7 ml	12 x 100	4200	4137
	Swing out	7000731	7000732	7000738	240 ml	12 x 5 ml	12.5 x 75	4200	4137
	Swing out	7000731	7000732	7001648	140 ml	7 x 5 ml and VAC*	13 x 75	4200	4137
	Swing out	7000731	7000732	7000739	144 ml	12 x 3 ml	11 x 100	4200	4137
	Swing out	7000731	7000732	7000740	-	undrilled	-	4200	4137
7000612	Swing out	-	-	-	-	4 x 96 microtiter	-	4200	1719

*VAC: Blood tube with stopper.

** Bucket Part No. 7000731 accommodate 1 x 200 ml polypropylene bottle with cap without the need of an adapter.

Note: All buckets and adapters come without tubes unless stated, see page 132 for tubes and accessories.

ACCESSORIES

Interchangeable angle rotors with lids, made of hardened anodised aluminium. Rotors come with identification system. Autoclavable rotors and buckets.

Part No. head	Rotor type	Max. volume	Tube capacity	Ø x Length mm	Max. R.p.m.	Max. R.c.f. (xg)
7001705	Angle+lid	270 ml	18 x 15 ml	16.5 x 100	4200	1893
7001711	Angle+lid	400 ml	8 x 50 ml	34 x 100	4200	1921
7001342	Angle+lid	360 ml	24 x 15 ml	16.5 x 100	4200	1893

Note: All buckets and adapters come without tubes unless stated, see page 132 for tubes and accessories.



7001705



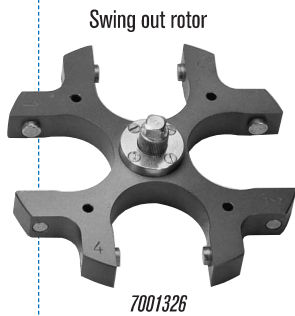
7001711



7001342

Swing out rotor, interchangeable buckets and adapters each with identification code. Autoclavable.

BUCKETS



Swing out rotor

7001326



7001700



7000793



7000794



7000795



7000796



7000797



7000930



7000931



7001073



7001074



7000798



7001315

Sealed bucket with hermetically sealed lid.



7001316



7001317



7001318



7001319



7001320



7001321



7001322

ADAPTERS

Part No. Rotor	Rotor type	Part No. bucket	Sealed bucket	Part No. adapter	Total max. Volume (4 adapters)	Bucket/Adapter capacity	Ø x Length mm	Max. R.p.m.	Max. R.c.f. (xg)	
7001326	Swing out	7001700	-	-	400 ml	1 x 100 ml	44 x 104	4200	3030	
	Swing out	7000793	-	-	200 ml	1 x 50 ml	34 x 100	4200	3030	
	Swing out	7000794	-	-	100 ml	1 x 25 ml	24 x 100	4200	3030	
	Swing out	7000795	-	-	240 ml	4 x 15 ml	16.5 x 100	4200	3030	
	Swing out	7000796	-	-	140 ml	5 x 7 ml	12 x 100	4200	3030	
	Swing out	7000797	-	-	100 ml	5 x 5 ml	12.5 x 75	4200	2441	
	Swing out	7000930	-	-	240 ml	4 x 15 ml Falcon	16.5 x 120	4200	3030	
	Swing out	7000931	-	-	200 ml	1 x 50 ml Falcon	30 x 117	4200	3030	
	Swing out	7001073	-	-	16 VAC	4 VAC*	16 x 100	4200	3030	
	Swing out	7001074	-	-	16 VAC	4 VAC*	13 x 75	4200	2441	
	Swing out	7000798	-	-	undrilled	-	-	4200	3030	
	Swing out	-	7001315	100 ml glass tube**	-	400 ml	1 x 100 ml	44 x 104	4200	2901
	Swing out	-	7001315	7001316	-	200 ml	1 x 50 ml	34 x 100	4200	2901
	Swing out	-	7001315	7001317	-	100 ml	1 x 25 ml	24 x 100	4200	2901
	Swing out	-	7001315	7001318	-	240 ml	4 x 15 ml	16.5 x 100	4200	2901
	Swing out	-	7001315	7001319	-	140 ml	5 x 7 ml	12 x 100	4200	2901
	Swing out	-	7001315	7001320	-	100 ml	5 x 5 ml	12.5 x 75	4200	2901
	Swing out	-	7001315	7001321	-	64 ml	4 VAC*	13 x 75	4200	2901
	Swing out	-	7001315	7001322	-	undrilled	-	-	4200	2901

*VAC(r): Blood tube with cap (bung). **Sealed bucket Part No. 7001315 accommodates a 100 ml glass tube without the need of an adapter.

Note: All buckets and adapters come without tubes unless stated, see page 132 for tubes and accessories.

HEAD AND BUCKET REDUCERS

Reducers for head. Part No. **7001711**:

7001707 For 1 tube 50 ml (29 Ø x 103 mm).

7001708 For 1 tube 25 ml (24 Ø x 100 mm).

7001709 For 1 tube 30 ml (25 Ø x 92 mm).

7001710 For 1 tube 15 ml (16,5 Ø x 100 mm).

7001780 For 1 tube 10 ml (16 Ø x 80 mm).

7001781 For 4 tubes 7 ml (12 Ø x 100 mm).

7001782 For 4 tubes 5 ml (12,5 Ø x 75 mm).

Reducers for bucket. Part No. **7001700**:

7001779 for 1 tube 85 ml (38 Ø x 112 mm).



High speed centrifuges with microprocessor control "Centronic BLT" and "Centrifriger BLT"



Versatile. Large range of rotors and adapters. Maintenance free induction motor drive.



Model "Centronic BLT"

MODEL

Part No.	Max. Volume ml	Max. number of tubes	Height / Width / Depth (exterior) cm	Power W	Weight Kg
7001768	400	4 x 100 ml	34 41 54	440	22

Control panel features (see page 116).

External case of DUR-AL alloy with ABS plastic coated front AISI 304 stainless steel bowl.



Model "Centrifriger BLT" refrigerated, temperature range -12 °C to 40 °C.

MODEL

Part No.	Max. Volume ml	Max. number of tubes	Height / Width / Depth (exterior) cm	Power W	Weight Kg
7001769	400	4 x 100 ml	34 41 71	960	39

Note: The rotor being used limits the actual temperature in the chamber due to the speed and ambient temperature. Internal temperature indicated on the LCD display.

ACCESSORIES

Angle rotors with lid, made of anodised hardened aluminium with identification system. All rotors are autoclavable.



7001670



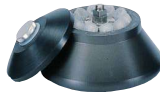
7001324



7001706



7001325



7001323



7001671



7001672



7001673



7001408 With calculator reader

Part No. head	Rotor type	Max. volume	Tubes capacity	Ø x Length mm	CENTRONIC BLT		CENTROFRIGER BLT	
					Max. R.p.m	Max. R.c.f. (xg)	Max. R.p.m	Max. R.c.f. (xg)
7001670	Angle+lid	270 ml	18 x 15 ml	16,5 x 100	4200	1893	4200	1893
7001706	Angle+lid	400 ml	8 x 50 ml	34 x 100	6000	3920	6000	3920
7001325	Angle+lid	500 ml	6 x 50 ml	29 x 103	6000	3920	6000	24204
7001324	Angle+lid	180 ml	6 x 30 ml	25 x 92	13500	16900	15300	20410
7001323	Angle+lid	100 ml	10 x 10 ml	16 x 80	13500	18335	15300	23550
7001671	Angle+lid	40.5 ml	18x0.25/0.5 ml + 18x1.5/2.2 ml	-	13500	15992	15300	20541
7001672	Angle+lid	60 ml	40 x 0.25/0.5 ml	-	13500	16250	15000	20100
7001673	Angle+lid	45 ml	30 x 1.5/2.2 ml	-	13500	19048	15000	23716
7001408	Angle+lid	Microhaematocrit	24	1.4 x 75	12000	15935	12000	15935

Note: All buckets and adapters come without tubes unless stated, see page 132 for tubes and accessories.

ACCESSORIES

Swing out rotor with interchangeable sealed buckets and adapters, each with identification code. Autoclavable.



Part No. head	Rotor Type	Part No. bucket	Sealed bucket	Part No. adapter	Total max. Volume (4 adapters)	Bucket/Adapter capacity	Ø x Length mm	Max. R.p.m.	Max. R.c.f. (xg)	
7001407	Swing out	7001700	-	-	400 ml	1 x 100 ml	44 x 104	5000	4137	
	Swing out	7000793	-	-	200 ml	1 x 50 ml	34 x 100	5000	4137	
	Swing out	7000794	-	-	100 ml	1 x 25 ml	24 x 100	5000	4137	
	Swing out	7000795	-	-	240 ml	4 x 15 ml	16.5 x 100	5000	4137	
	Swing out	7000796	-	-	140 ml	5 x 7 ml	12 x 100	5000	4137	
	Swing out	7000797	-	-	100 ml	5 x 5 ml	12.5 x 75	5000	3318	
	Swing out	7000930	-	-	240 ml	4 x 15 ml Falcon	16.5 x 120	5000	4109	
	Swing out	7000931	-	-	200 ml	1 x 50 ml Falcon	30 x 117	5000	4109	
	Swing out	7001073	-	-	16 VAC	4 VAC*	16 x 100	5000	4137	
	Swing out	7001074	-	-	16 VAC	4 VAC*	13 x 75	5000	3318	
	Swing out	7000798	-	-	undrilled	-	-	5000	4137	
	Swing out	-	7001315	100 ml glass tube**	-	400 ml	1 x 100 ml	44 x 104	5000	4137
	Swing out	-	7001315	-	7001316	200 ml	1 x 50 ml	34 x 100	5000	4137
	Swing out	-	7001315	-	7001317	100 ml	1 x 25 ml	24 x 100	5000	4137
	Swing out	-	7001315	-	7001318	240 ml	4 x 15 ml	16.5 x 100	5000	4137
	Swing out	-	7001315	-	7001319	140 ml	5 x 7 ml	12 x 100	5000	4137
	Swing out	-	7001315	-	7001320	100 ml	5 x 5 ml	12.5 x 75	5000	4137
	Swing out	-	7001315	-	7001321	64 ml	4 VAC*	13 x 75	5000	4137
	Swing out	-	7001315	-	7001322	undrilled	-	-	5000	4137

*VAC(r): Blood tube with cap.

**Sealed bucket Part No. 7001315 accommodates a 100 ml glass tube without the need of an adapter.

Micro-haematocrit rotor comes with a box of 100 tubes and calculus graph.

Note: All buckets and adapters come without tubes unless stated, see page 132 for tubes and accessories.

HEAD AND BUCKET REDUCERS

Reducers for head, Part No. 7001706:

7001707 For 1 tube 50 ml (29 Ø x 103 mm).

7001708 For 1 tube 25 ml (24 Ø x 100 mm).

7001709 For 1 tube 30 ml (25 Ø x 92 mm).

7001710 For 1 tube 15 ml (16,5 Ø x 100 mm).

7001780 For 1 tube 10 ml (16 Ø x 80 mm).

7001781 For 4 tube 7 ml (12 Ø x 100 mm).

7001782 For 4 tube 5 ml (12,5 Ø x 75 mm).

Reducers for head, Part No. 7001325:

7001791 For 1 tube 25 ml (24 Ø x 100 mm).

7001792 For 1 tube 30 ml (25 Ø x 92 mm).

7001793 For 1 tube 15 ml (16,5 Ø x 100 mm).

7001794 For 1 tube 10 ml (16 Ø x 80 mm).

7001795 For 2 tubes 7 ml (12 Ø x 100 mm).

7001796 For 2 tubes 5 ml (12,5 Ø x 75 mm).

Reducers for head, Part No. 7001324:

7001797 For 1 tube 15 ml (16,5 Ø x 100 mm).

7001798 For 1 tube 10 ml (16 Ø x 80 mm).

7001799 For 1 tube 7 ml (12 Ø x 100 mm).

7001800 For 1 tube 5 ml (12,5 Ø x 75 mm).

Reducers for head, Part No. 7001670:

7000700 For 1 tube 7 ml (12 Ø x 100 mm).

1001557 For 1 tube 5 ml (12,5 Ø x 75 mm).

Reducers for head, Part No. 7001323:

7001801 For 1 tube 5 ml (12,5 Ø x 75 mm).

Reducers for bucket, Part No. 7001700:

7001779 For 1 tube 85 ml (38 Ø x 112 mm).

ACCESSORIES

Swing out rotor with interchangeable sealed buckets and adapters, each with identification code. Autoclavable.



Part No. head	Rotor type	Bucket open	Sealed bucket	Part No. adapter	Total max. Volume (4 adapters)	Bucket/Adapter capacity	Ø x Length mm	Max. R.p.m.	Max. R.c.f. (xg)
	Swing out	7000731	7000732	7000734	200 ml	1 x 50 ml	34 x 100	5000	4200
	Swing out	7000731	7000732	7000735	200 ml	2 x 25 ml	24 x 100	5000	4200
	Swing out	7000731	7000732	7000736	420 ml	7 x 15 ml and VAC*	16.5 x 100	5000	4200
7009079	Swing out	7000731	7000732	7001647	240 ml	6 x 10 ml	17 x 110	5000	4200
	Swing out	7000731	7000732	7000737	336 ml	12 x 7 ml	12 x 100	5000	4200
	Swing out	7000731	7000732	7000738	240 ml	12 x 5 ml	12.5 x 75	5000	4200
	Swing out	7000731	7000732	7001648	140 ml	7 x 5 ml and VAC*	13 x 75	5000	4200
	Swing out	7000731	7000732	7000739	144 ml	12 x 3 ml	11 x 100	5000	4200
	Swing out	7000731	7000732	7000740	-	undrilled	-	5000	4200
7000613	Swing out	-	-	-	-	4 x 96 microtiter	-	4200	1719

*VAC: Blood tube with stopper.

** Bucket part nos. 7000731 and 7000732 accommodate 1 x 200 ml polypropylene bottle with cap without the need of an adapter.

Note: All buckets and adapters come without tubes unless stated, see page 132 for tubes and accessories.



Microprocessor controlled centrifuges “Meditronic BLT”, “Medifriger BLT”, “Macrotronic BLT” and “Macrofriger BLT”



COMMON FEATURES

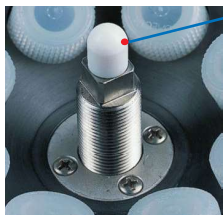
Induction drive maintenance free motor.

Low noise level 50-60dBa.

Robust all metal construction:

- External case made from DUR-Al alloy.
- Internal bowl and top plate all stainless steel
- Internal steel safety chamber within the case.

Electronic circuits, microprocessor digital control of all parameters and functions: speed, acceleration, brake, RCF, temperature, timer, 10 program storage, automatic rotor recognition and alarm system.



Rotor identification head, when the centrifuge lid is closed the rotor communicates all the data of the functions of it. This prevents, before use, any risk of failure of using the wrong rotor in a program or exceeding the rotors running parameters. The advantage of this system is that we can add additional rotors to the range without changing the centrifuge model.

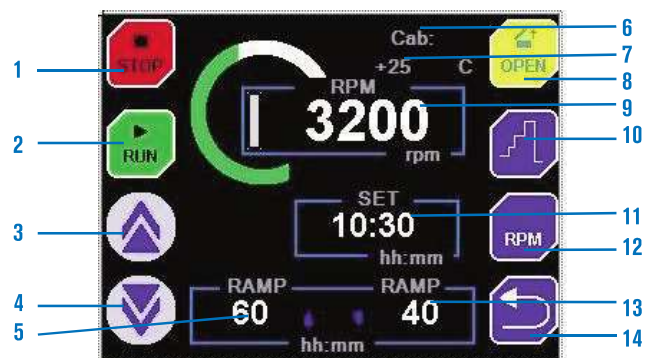
All Rotors, buckets and adapters are identified with an inalterable engraved laser code.

Air circulation system, for centrifuges without refrigeration to limit any excessive rise in temperature within the centrifuge, all air circulated within the chamber is channelled out of the back and is not re-circulated, this means that the centrifuges internal temperature will remain low and constant.

Hermetically sealed compressor, mounted on anti-vibration mounts with re-circulating evaporator around the centrifuge chamber. (only applies to refrigerated centrifuges).

CONTROL PANEL

Touch screen



1. Stop process key.
2. Start process key.
3. Increase value key.
4. Decrease value key.
5. Scheduled acceleration ramp.
6. Rotor model in use.
7. Reading the real time temperature. (refrigerated models only).
8. Door opening key.
9. RPM or RCF real-time reading.
10. Sequential operation.
11. Time set-up in process.
12. Key to change RPM / RCF.
13. Braking ramp programmed.
14. Return key..