



Refrigerated high capacity microprocessor controlled centrifuge suitable for tubes, flasks and blood bags “Megafriger-BLT-Blood” and “Macrofriger-BLT-Blood”



Original J.P. Selecta design. With maintenance free induction drive motor

SAFETY:
SAFETY, CONFORMS TO UNE-EN 61010-2-020.
PROTECTIVE INTERNAL CYLINDER BETWEEN THE CASE AND BOWL.
THE LID CANNOT BE OPENED WHILE THE ROTOR IS SPINNING.
THE MOTOR CANNOT SPIN WHILE THE LID IS OPEN.

IMBALANCE DETECTOR, AUTOMATICALLY STOPS IF THERE IS ANY IMBALANCE.
DOUBLE ELECTROMAGNETIC LID LOCK.
IF THERE IS A POWER FAILURE, A FAIL SAFE SYSTEM CAN BE USED TO OPEN THE LID.
EMERGENCY STOP BUTTON.

COMMON FEATURES

- 7” TFT touch screen.
- Furniture: aluminum structure in Megafriger model and in steel tube with Dur-Al sides in Macrofriger model.
- Internal Stainless steel bowl .
- Aluminium windbreak cover.
- Safety shield: 8 mm thick steel.
- Swing-out rotor, buckets and adapters made of high-density material, engraved identification unalterable.
- Suspended motor with silent-block and shock absorbers that guarantee smooth, quiet operation without vibrations.
- Drive force: equipped with an induction drive maintenance free and highly efficient pollution free motor.
- Semi-hermetically sealed, compressor pollution free with no hydrocarbons or fluorocarbons.
- Mounted on an anti vibration adjustable rubber feet.
- Microprocessor digital control of all functions: speed, acceleration, brake, R.C.F., temperature, time, 10 program memory, rotor identification, operation fault alarm.
- Digital indicator of the rotor and blood bag buckets operating hours.

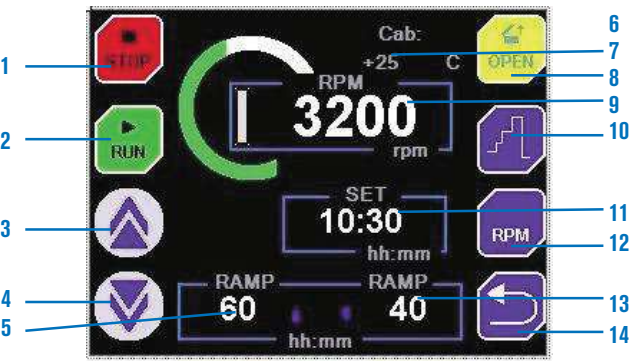
APPLICATIONS

Specially designed for blood bank applications, where repeatability, precision and reliability of: speed, time, temperature, acceleration and deceleration are significant factors in obtaining perfect separations of the distinct blood fractions.

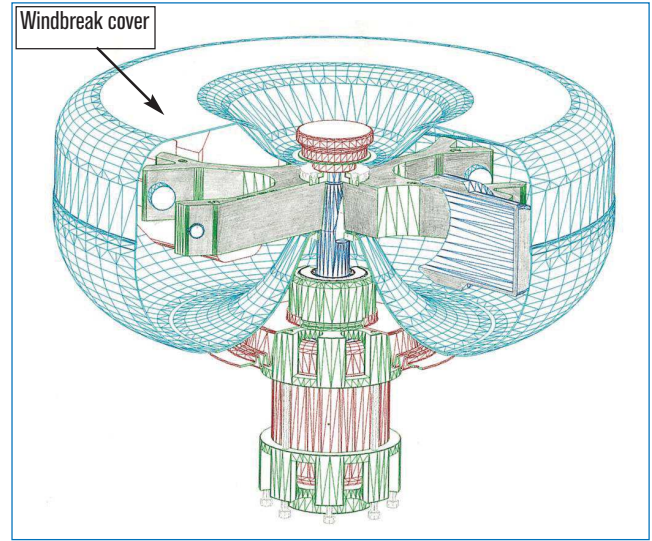
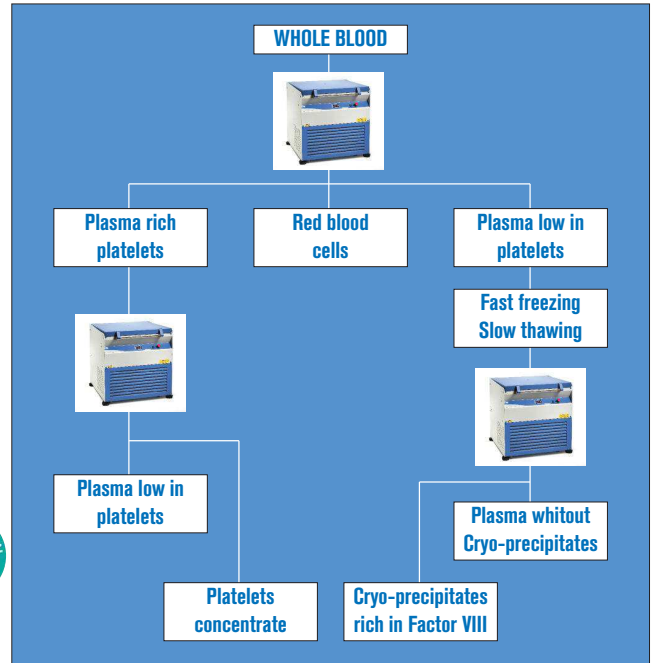
Serology investigations.
Molecular biology.
Serum separation, pharmaceutical applications.

CONTROL PANEL

Touch screen



- | | |
|---------------------------------------|----------------------------------|
| 1. Stop process key. | 8. Door opening key. |
| 2. Start process key. | 9. RPM or RCF real-time reading. |
| 3. Increase value key. | 10. Sequential operation. |
| 4. Decrease value key. | 11. Time set-up in process. |
| 5. Scheduled acceleration ramp. | 12. Key to change RPM / RCF. |
| 6. Rotor model in use. | 13. Braking ramp programmed. |
| 7. Reading the real time temperature. | 14. Return key.. |
- (refrigerated models only).



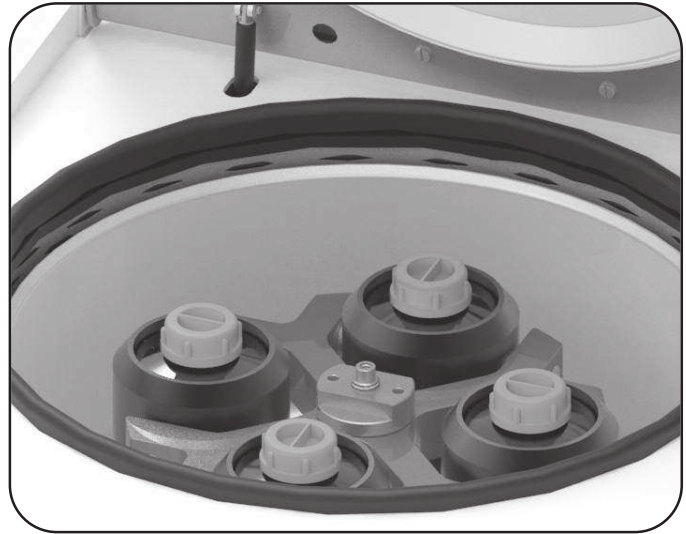
Cross-section of the motor, rotor drive mechanism, showing the windbreak protector with lid that reduces the air resistance and maintains a regulated temperature.



Refrigerated high capacity microprocessor controlled centrifuge suitable for tubes, flasks and blood bags “Megafriger-BLT-Blood”

ADJUSTABLE WORKING TEMPERATURES FROM -10 TO 40 ° C. (TEMPERATURE AT STANDSTILL -20 ° C).
CAPACITY UP TO 1000 ML BOTTLES AND SPECIAL FOR BLOOD BAGS OF 500 TO 800 ML.
MAXIMUM CAPACITY 4 BAGS.

NEW



Swing out rotor 4 places detail



Features and control panel (see page 129).

TECHNICAL SPECIFICATION

Maximum volume:	4000 ml
Maximum bucket volume:	1000 ml
Speed 7001488:	from 300 to 4600 r.p.m.
Accuracy:	± 5 r.p.m.
Resolution r.p.m.:	10 r.p.m.
R.C.F.:	from 24 to 5700
Imbalance:	± 5 g
Accuracy:	4 g
Temperature range:	from -10 °C to 40 °C
Temperature stability:	±4 °C
Resolution:	1 °C
Temperature range:	99 min. 59 sec.
Centrifuge radius:	241 mm
Acceleration profile:	5
Brake profile:	9 linear 6 quadratic
Voltage:	230.
Power:	1700 VA

MODEL

Part No.	Max. Volume ml	Max. Capacity	Height / Width / Depth (exterior) cm	Power W	Weight Kg
7001488	4000	4 bags x 1000 ml	97 70 72	1700	190

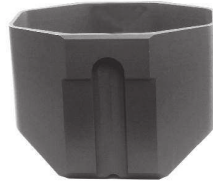
ACCESSORIES FOR PART NO. 7001490

Swing out rotor 4 places, treated steel.



Part No. **7001343**

Interchangeable buckets and reducers with identification sign. Autoclavable.



Single bucket.
Bags of 500 to 800 ml.
Part No. **7001344**



Single bucket.
Capacity: 1 blood bag of 500 to 800 ml or 1 flask of 1 litre or with tube adapters.
Part No. **7001393**

Adapters for single bucket Part No. 7001393.

Bottle



1001394



7001395



7001396



7001397



7001398



7001399



7001400



7001401

Single Bucket	Part No. adapter	Total max. Volume (4 adapters)	Capacity: bags, tubes by adapter	Ø x Length mm	R.p.m. Min./Max.	R.c.f. (xg) Min./Max.
7001344	-	3200 ml	2 bag 500 or 800 ml	-	300/4600	24/5520
7001393 Capacity without adapter: 1 bag of 500 to 800 ml or 1x bottle 1000 ml	Bottle 1000 ml 1001394	4000 ml	1 bottle 1000 ml or 1 bag	98 x 175	300/4600	24/5520
	7001395	2000 ml	1 bottle 500 ml	70 x 165	300/4600	24/5520
	7001396	800 ml	1 bottle 200 ml	56.6 x 104	300/4600	24/5520
	7001397	800 ml	2 tubes 100 ml	44 x 104	300/4600	24/5520
	7001398	800 ml	4 tubes 50 ml	34 x 100	300/4600	24/5520
	7001399	900 ml	9 tubes 25 ml	24 x 100	300/4600	24/5520
	7001400	1020 ml	17 tubes 15 ml	16.5 x 100	300/4600	24/5520
7001401	672 ml	24 tubes 7 ml	12 x 100	300/4600	24/5520	

Note: All buckets and adapters come without tubes, see page 132 for tubes and accessories.
Other adapters can be manufactured as per customers specification.

COMPLEMENTS



Blood bank refrigerated cabinets “Blood Bank” A, C and D

FORCED AIR CIRCULATION.
FIXED TEMPERATURE +4 °C. STABILITY ±1.5 °C. RESOLUTION 1 °C.
SEVEN DAYS GRAPHIC TEMPERATURE REGISTER.
CAPACITIES FROM 80 TO 480 BLOOD BAGS.

FEATURES

See page. 79



MODELS	Part No.	Capacity litres	Capacity bags	Height / Width / Depth (interior) cm	Height / Width / Depth (exterior) cm	Power W	Power HP	Number of shelves	Weight Kg
Blood Bank A	2101519	235	80	109 51 55	156 61 62	300	1/7	4	90
Blood Bank C	2101512	560	200	153 54 66	213 80 79	497	3/8	4	165
Blood Bank D	2101514	1240	480	153 124 68	213 139 79	1034	5/8	8	212

They are supplied with trays.