



We offer the wide and complete range of RS filter paper in which different types of filter paper regarding features, filtration speed and manufacturing materials, can be found; thus covering the wide and varied range of applications of this material in the different sectors (food and beverage industry, me-

tallurgy, environmental pollution control, hospitals, research, education, etc.). To find the type of filter paper that better fits user necessities we count with the collaboration and advice of Ms Jean-Pierre Durieux, an expert on filter paper with many years of experience in this area.

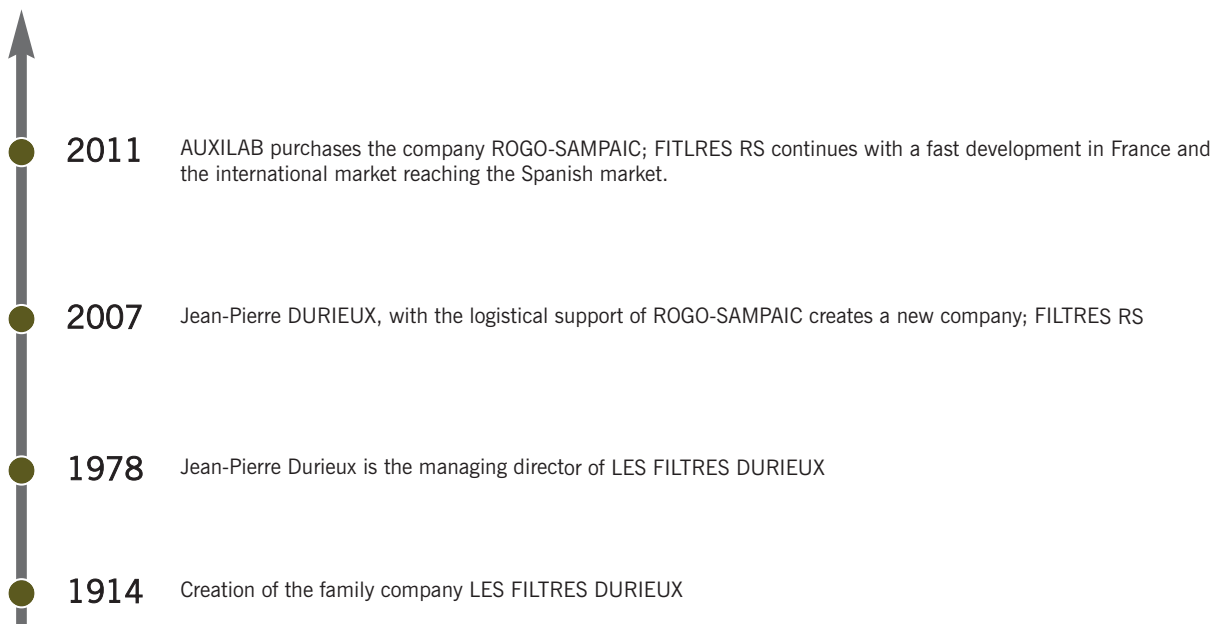
▶ FILTERS RS: THE HISTORY

FILTERS RS: evolution of the logo



With the experience of more than two generation, the DURIEUX family has become a reference in the market of filter paper, being specialists in their own manufacture of filter paper.
Jean-Pierre Durieux started working in the family company, becoming the managing director of LES FILTRES DURIEUX in 1978.

Today, the manufacture of the whole range of FILTRES RS is made under the supervision of Jean-Pierre DURIEUX, a recognised expert in the sector. Thanks to the experience gained during all his career, he has managed to created a high quality filter paper; offering the possibility of a custom-made according to user´s necessities.



FILTERS RS: THE APPLICATIONS

[01] Health
Pharmaceutical industry



[02] Beverage



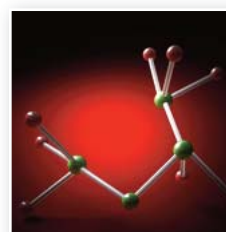
[03] Food industry



[04] Research



[05] Chemistry



[06] Metallurgical industry



[07] Atmospheric pollution



[08] Water and solvent



[09] Petroleum derived



[10] Education



FILTERS RS; equivalent chart

Filtros RS	DURIEUX	WHATMAN	SARTORIUS	FIORONI	PRAT DUMAS	MACHEREY-NAGEL	SCHLEICHER & SCHUELL	ADVANTEC
SCLO	111 BLEU	42	391	14	6601	640 de	-	5C
SCMO	111 BLANC	40	392	13	6600	640 w	589/6	5B
SCRO	111 ROUGE	41	389	12	6602	615	589/2	7
SCSG	111 VERT	43	-	32	6602	-	589/5	6
SCTR	113 NOIR	41	389F	11	603	640 we	589/2	7
SCLO	115	52/50	1289	153	600/601	1672/1674	-	4A
FC28M	128	-	292	113	107	616 md	-	-
FC27E	127	113	289	-	613	-	-	-
FC75M	SUPER	31	-	113	107	616 md	-	-
FC20M	120	32/1	290	113	107	616 md	-	-
FC26R	126	2	292	112	110	617	597	2
FC22L	122	3	291	114	210	619	-	131
FC75R	200	4	416/291	-	609	-	604	101
FC29E	129	2589a	293/SB2	-	116	619 de	-	-
FC49L	149	-	-	115	-	619 de	-	-
FC21R	121	17/AA	C250	112	108	617	-	-
FC150R	400	120	-	-	-	-	-	-
FV341	D34	GF/C	GMF1	-	8855	GF-3	GF 52	GC 50



▶ PSX - REAMS



Code	Paper type	Weight	Dimensions	Ream of
PSX001	Joseph paper	25 g/m ²	15x15 cm	500 sheets
PSX002	Joseph paper	25 g/m ²	35x50 cm	500 sheets
PSX003	Joseph paper	25 g/m ²	35x50 cm	800 sheets
PSX007	White paper 7 Kg	67 g/m ²	40/42x52 cm	500 sheets
PSX005	White paper 7 Kg	77 g/m ²	52x52 cm	500 sheets
PSX004	Grey paper	60 g/m ²	42x52 cm	500 sheets
PSX006	Qualitative paper	77 g/m ²	58x65 cm	100 sheets

▶ PSB- Standard

STANDARD FILTERS; applications



Health Pharmaceutical industry

Food industry

Research

Education

STANDARD FILTERS; features

Type	Standard
Weight (g/m ²)	77
Thickness (mm)	0.16 / 0.18
pH	7
Humidity (%)	6.8 ± 0.2
Resistance, dry state (Kg)	
Longitudinal	3.5/4.0 > 3.5
Through	1.3/1.4 > 2.2
Resistance, wet state (Kg)	
Longitudinal	> 0.8
Through	> 0.5
Porosity (µm)	8 - 11



Plain	Folded	Ø (mm)	Box of (units)
PSB001	-	55	100
PSB002	PSB014	70	100
PSB003	-	90	100
PSB004	PSB015	100	100
PSB005	PSB016	130	100
PSB006	PSB017	150	100
PSB007	-	185	100
PSB008	PSB018	190	100
PSB009	PSB019	250	100
PSB010	PSB020	330	100
PSB011	PSB021	400	100
PSB012	PSB022	450	100
PSB013	PSB023	500	100
-	PSB024	650	100



▶ QUANTITATIVE FILTERS

▶ PSK - Slow quantitative - FILTROS SCLO

QUANTITATIVE FILTERS; SCLO

Type	Weight (g/m ²)	Thickness (mm)	Retention (μm)	Filtration speed (s)	Resist. wet state
SCLO	80	0.2	3	100	Medium



- 1 | Slow filtration speed
- 2 | Dense texture
- 3 | Ideal for retention of fine precipitates

Plain	Folded	Ø (mm)	Box of (units)
PSK001	-	12	100
PSK002	-	22	100
PSK003	-	40	100
PSK004	-	55	100
PSK005	PSK014	70	100
PSK006	PSK015	90	100
PSK007	PSK016	110	100
PSK008	PSK017	125	100
PSK009	PSK018	135	100
PSK010	PSK019	150	100
PSK011	PSK020	185	100
PSK012	PSK021	210	100
PSK013	PSK022	240	100

▶ PSL - Medium quantitative - SCSG

QUANTITATIVE FILTERS ; SCSG

Type	Weight (g/m ²)	Thickness (mm)	Retention (μm)	Filtration speed (s)	Resist. wet state
SCSG	80	0.16	6	40	Medium



- 1 | Medium filtration speed, without fats
- 2 | Medium texture
- 3 | Ideal for determination of fats in food industry

Plain	Folded	Ø (mm)	Box of (units)
PSL001	-	12	100
PSL002	-	22	100
PSL003	-	40	100
PSL004	-	55	100
PSL005	PSL014	70	100
PSL006	PSL015	90	100
PSL007	PSL016	110	100
PSL008	PSL017	125	100
PSL009	PSL018	135	100
PSL010	PSL019	150	100
PSL011	PSL020	185	100
PSL012	PSL021	210	100
PSL013	PSL022	240	100



▶ QUANTITATIVE FILTERS

▶ PSM - Fast quantitative - FILTROS SCRO

QUANTITATIVE FILTERS ; SCRO

Type	Weight (g/m ²)	Thickness (mm)	Retention (μm)	Filtration speed (s)	Resist. wet state
SCRO	80	0.16	10	25	Acceptable



- 1| Fast filtration speed
- 2| Loose texture
- 3| Ideal for metallurgical industry

Plain	Folded	Ø (mm)	Box of (units)
PSM001	-	12	100
PSM002	-	22	100
PSM003	-	40	100
PSM004	-	55	100
PSM005	PSM014	70	100
PSM006	PSM015	90	100
PSM007	PSM016	110	100
PSM008	PSM017	125	100
PSM009	PSM018	135	100
PSM010	PSM019	150	100
PSM011	PSM020	185	100
PSM012	PSM021	210	100
PSM013	PSM022	240	100

▶ PSN - Very fast quantitative - SCTR

QUANTITATIVE FILTERS ; SCTR

Type	Weight (g/m ²)	Thickness (mm)	Retention (μm)	Filtration speed (s)	Resist. wet state
SCTR	80	0.13	15	12	Acceptable





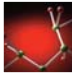



- 1| Very fast filtration speed
- 2| Loose texture
- 3| Ideal for retention of big precipitates as metal hydrides

Plain	Folded	Ø (mm)	Box of (units)
PSN001	-	12	100
PSN002	-	22	100
PSN003	-	40	100
PSN004	-	55	100
PSN005	PSN014	70	100
PSN006	PSN015	90	100
PSN007	PSN016	110	100
PSN008	PSN017	125	100
PSN009	PSN018	135	100
PSN010	PSN019	150	100
PSN011	PSN020	185	100
PSN012	PSN021	210	100
PSN013	PSN022	240	100



▶ QUALITATIVE FILTERS

QUALITATIVE FILTERS; applications

 Food industry	 Beverage	 Chemistry
 Education	 Pollution	 Oils

▶ PSC - Very slow qualitative - FC29E

QUALITATIVE FILTERS; FC29E

Type	Weight (g/m ²)	Thickness (mm)	Retention (μm)	Filtration speed (s)	Resist. wet state
FC29E	180	0.45	2	200	Very good



- 1 | Very slow filtration speed
- 2 | Extra-hard paper
- 3 | Ideal for aqueous solutions and volatile liquids such as alcohols, fuels, ether,...

Plain	Folded	Ø (mm)	Box of (units)
PSC001	-	25	100
PSC002	-	40	100
PSC003	-	55	100
PSC004	-	70	100
PSC005	PSC022	90	100
PSC006	PSC023	110	100
PSC007	PSC024	125	100
PSC008	PSC025	135	100
PSC009	PSC026	150	100
PSC010	PSC027	185	100
PSC011	PSC028	210	100
PSC012	PSC029	240	100
PSC013	PSC030	270	100
PSC014	PSC031	320	100
PSC015	PSC032	385	100
PSC016	PSC033	450	100
PSC017	PSC034	500	100
PSC018	PSC035	650	50
PSC019	PSC036	700	50
PSC020	PSC037	800	50
PSC021	-	900	50



► PSD - Slow qualitative - FILTROS FC22L

QUALITATIVE FILTERS ; FC22L

Type	Weight (g/m ²)	Thickness (mm)	Retention (µm)	Filtration speed (s)	Resist. wet state
FC22L	85	0.20	3	100	Medium



- 1 | Slow filtration speed
- 2 | Dense texture with high retention
- 3 | Ideal for vacuum filtration of injectable serum, etc.

Plain	Folded	Ø (mm)	Box of (units)
PSD001	-	25	100
PSD002	-	40	100
PSD003	-	55	100
PSD004	PSD016	70	100
PSD005	PSD017	90	100
PSD006	PSD018	110	100
PSD007	PSD019	125	100
PSD008	PSD020	135	100
PSD009	PSD021	150	100
PSD010	PSD022	185	100
PSD011	PSD023	210	100
PSD012	PSD024	240	100
PSD013	PSD025	270	100
PSD014	PSD026	320	100
PSD015	PSD027	385	100
-	PSD028	450	100
-	PSD029	500	100

► PSG - Fast qualitative - FC27E

QUALITATIVE FILTERS; FC27E

Type	Weight (g/m ²)	Thickness (mm)	Retention (µm)	Filtration speed (s)	Resist. wet state
FC27E	160	0.45	8	120	Good



- 1 | Slow filtration speed
- 2 | Extra-soft thick paper
- 3 | Ideal for filtration of oils, syrups, fat substances. Used also with Buchner funnels.

Plain	Folded	Ø (mm)	Box of (units)
PSG002	-	40	100
PSG003	-	55	100
PSG004	-	70	100
PSG005	PSG019	90	100
PSG006	PSG020	110	100
PSG007	PSG021	125	100
PSG008	PSG022	135	100
PSG009	PSG023	150	100
PSG010	PSG024	185	100
PSG011	PSG025	210	100
PSG012	PSG026	240	100
PSG013	PSG027	270	100
PSG014	PSG028	320	100
PSG015	PSG029	385	100
PSG016	PSG030	450	100
PSG017	PSG031	500	100
-	PSD029	500	100



► PSD - Slow qualitative - FILTROS FC49L

QUALITATIVE FILTERS ; FC49L

Type	Weight (g/m ²)	Thickness (mm)	Retention (µm)	Filtration speed (s)	Resist. wet state
FC49L	150	0.40	2	180	Very good



- 1 | Slow filtration speed
- 2 | 150 g/m² paper with high retention and good solidity
- 3 | Ideal for biochemistry and pharmaceutical industry

Plain	Folded	Ø (mm)	Box of (units)
PSD032	-	25	100
PSD033	-	40	100
PSD034	-	55	100
PSD030	-	70	100
PSD031	PSD047	90	100
PSD035	PSD048	110	100
PSD036	PSD049	125	100
PSD037	PSD050	135	100
PSD038	PSD051	150	100
PSD039	PSD052	185	100
PSD040	PSD053	210	100
PSD041	PSD054	240	100
PSD042	PSD055	270	100
PSD043	PSD056	320	100
PSD044	PSD057	385	100
PSD045	PSD058	450	100
PSD046	PSD059	500	100

► PSF - Medium qualitative - FILTROS FC28M

QUALITATIVE FILTERS ; FC28M

Type	Weight (g/m ²)	Thickness (mm)	Retention (µm)	Filtration speed (s)	Resist. wet state
FC28M	80	0.18	5	40	Very good



- 1 | Medium filtration speed
- 2 | Very high resistance even when wet
- 3 | Ideal for alkaline or acid solutions

Plain	Folded	Ø (mm)	Box of (units)
PSF067	-	25	100
PSF001	-	40	100
PSF002	-	55	100
PSF003	PSF017	70	100
PSF004	PSF018	90	100
PSF005	PSF019	110	100
PSF006	PSF020	125	100
PSF007	PSF021	135	100
PSF008	PSF022	150	100
PSF009	PSF023	185	100
PSF010	PSF024	210	100
PSF011	PSF025	240	100
PSF012	PSF026	270	100
PSF013	PSF027	320	100
PSF014	PSF028	385	100
PSF015	PSF029	450	100
PSF016	PSF030	500	100



► PSF - Medium qualitative - FC20M

QUALITATIVE FILTERS ; FC20M

Type	Weight (g/m ²)	Thickness (mm)	Retention (µm)	Filtration speed (s)	Resist. wet state
FC20M	77	0.13	5	40	Good

- 1 | Medium filtration speed
- 2 | Good retention
- 3 | Ideal for general and educational purposes



Plain	Folded	Ø (mm)	Box of (units)
PSF031	-	25	100
PSF032	-	40	100
PSF033	-	55	100
PSF034	PSF048	70	100
PSF035	PSF049	90	100
PSF036	PSF050	110	100
PSF037	PSF051	125	100
PSF038	PSF052	135	100
PSF039	PSF053	150	100
PSF040	PSF054	185	100
PSF041	PSF055	210	100
PSF042	PSF056	240	100
PSF043	PSF057	270	100
PSF044	PSF058	320	100
PSF045	PSF059	385	100
PSF046	PSF060	450	100
PSF047	PSF061	500	100

► PSF - Medium qualitative - FC75M

QUALITATIVE FILTERS ; FC75M

Type	Weight (g/m ²)	Thickness (mm)	Retention (µm)	Filtration speed (s)	Resist. wet state
FC75M	75	0.16	6	50	Medium

- 1 | Medium filtration speed
- 2 | Very hard paper
- 3 | Most used filter paper for qualitative analysis, phosphates, sugars, fertilizers,...



Plain	Folded	Ø (mm)	Box of (units)
PSF062	-	25	100
PSF068	-	40	100
PSF069	-	55	100
PSF063	PSF080	70	100
PSF064	PSF081	90	100
PSF065	PSF082	110	100
PSF070	PSF083	125	100
PSF071	PSF084	135	100
PSF072	PSF085	150	100
PSF073	PSF086	185	100
PSF074	PSF087	210	100
PSF066	PSF088	240	100
PSF075	PSF089	270	100
PSF076	PSF090	320	100
PSF077	PSF091	385	100
PSF078	PSF092	450	100
PSF079	PSF093	500	100

► PSG - Fast qualitative - FC26R

QUALITATIVE FILTERS ; FC26R

Type	Weight (g/m ²)	Thickness (mm)	Retention (µm)	Filtration speed (s)	Resist. wet state
FC26R	75	0.15	10	30	Acceptable



- 1 | Fast filtration speed
- 2 | Very pure paper
- 3 | Ideal for preparation and analysis of pharmaceutical products and of metallurgical analysis

Plain	Folded	Ø (mm)	Box of (units)
PSG034	-	25	100
PSG035	-	40	100
PSG036	-	55	100
PSG037	PSG051	70	100
PSG038	PSG052	90	100
PSG039	PSG053	110	100
PSG040	PSG054	125	100
PSG041	PSG055	135	100
PSG042	PSG056	150	100
PSG043	PSG057	185	100
PSG044	PSG058	210	100
PSG045	PSG059	240	100
PSG046	PSG060	270	100
PSG047	PSG061	320	100
PSG048	PSG062	385	100
PSG049	PSG063	450	100
PSG050	PSG064	500	100

► PSF - Medium qualitative - FC21R

QUALITATIVE FILTERS ; FC21R

Type	Weight (g/m ²)	Thickness (mm)	Retention (µm)	Filtration speed (s)	Resist. wet state
FC21R	75	0.17	10	35	Medium



- 1 | Fast filtration speed
- 2 | Very pure paper
- 3 | Ideal for filtration of mucilaginous liquids

Plain	Folded	Ø (mm)	Box of (units)
PSG127	-	25	100
PSG128	-	40	100
PSG129	-	55	100
PSG130	PSG143	70	100
PSG131	PSG144	90	100
PSG065	PSG145	110	100
PSG132	PSG146	125	100
PSG133	PSG147	135	100
PSG134	PSG148	150	100
PSG135	PSG149	185	100
PSG136	PSG150	210	100
PSG137	PSG151	240	100
PSG138	PSG152	270	100
PSG139	PSG153	320	100
PSG140	PSG154	385	100
PSG141	PSG155	450	100
PSG142	PSG156	500	100



► PSG - Fast qualitative - FC150R

QUALITATIVE FILTERS ; FC150R

Type	Weight (g/m ²)	Thickness (mm)	Retention (µm)	Filtration speed (s)	Resist. wet state
FC150R	150	0.35	8	40	Very good



- 1 | Fast filtration speed
- 2 | Crepe paper of 150 g/m²
- 3 | Ideal filtration of loaded liquids

Plain	Folded	Ø (mm)	Box of (units)
PSG066	-	25	100
PSG067	-	40	100
PSG068	-	55	100
PSG069	-	70	100
PSG070	PSG080	90	100
PSG071	PSG081	110	100
PSG072	PSG082	125	100
PSG073	PSG083	135	100
PSG074	PSG084	150	100
PSG075	PSG085	185	100
PSG076	PSG086	210	100
PSG077	PSG087	240	100
PSG078	PSG088	270	100
PSG079	PSG089	320	100
PSG157	PSG090	385	100
PSG158	PSG091	450	100
PSG159	PSG092	500	100

► PSG - Fast qualitative - FC25R

QUALITATIVE FILTERS ; FC25R

Type	Weight (g/m ²)	Thickness (mm)	Retention (µm)	Filtration speed (s)	Resist. wet state
FC25R	77	0.15	8	35	Medium



- 1 | Fast filtration speed
- 2 | Smooth paper
- 3 | Ideal for big volumen precipitates

Plain	Folded	Ø (mm)	Box of (units)
PSG093	-	25	100
PSG094	-	40	100
PSG095	-	55	100
PSG096	PSG110	70	100
PSG097	PSG111	90	100
PSG098	PSG112	110	100
PSG099	PSG113	125	100
PSG100	PSG114	135	100
PSG101	PSG115	150	100
PSG102	PSG116	185	100
PSG103	PSG117	210	100
PSG104	PSG118	240	100
PSG105	PSG119	270	100
PSG106	PSG120	320	100
PSG107	PSG121	385	100
PSG108	PSG122	450	100
PSG109	PSG123	500	100



▶ PSH - Very fast qualitative - FC75R

QUALITATIVE FILTERS ; FC75R

Type	Weight (g/m ²)	Thickness (mm)	Retention (µm)	Filtration speed (s)	Resist. wet state
FC75R	60	0.12	15	25	Good



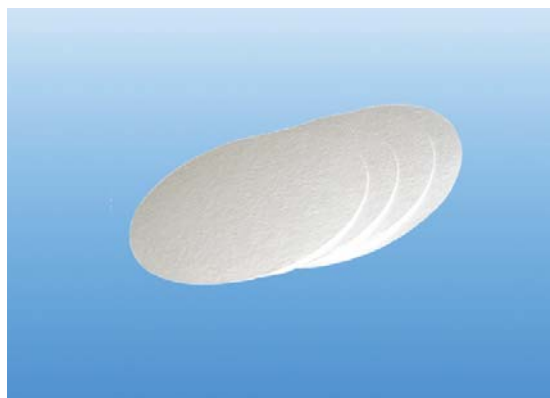
- 1 | Very fast filtration speed
- 2 | Very resistant crepe paper
- 3 | Ideal for all kinds of fast filtrations

Plain	Folded	Ø (mm)	Box of (units)
PSH028	-	25	100
PSH001	-	40	100
PSH002	-	55	100
PSH003	PSH014	70	100
PSH004	PSH015	90	100
PSH005	PSH016	110	100
PSH006	PSH017	125	100
PSH007	PSH018	135	100
PSH008	PSH019	150	100
PSH009	PSH020	185	100
PSH010	PSH021	210	100
PSH011	PSH022	240	100
PSH012	PSH023	270	100
PSH013	PSH024	320	100
PSH029	PSH025	385	100
PSH030	PSH026	450	100
PSH031	PSH027	500	100

▶ GLASS MICROFIBRE FILTERS - FV341

GLASS MICROFIBRE FILTERS; FV341

Type	Weight (g/m ²)	Thickness (mm)	Retention (µm)	Filtration speed (s)	Resist. wet state
FV341	50	0.30	2	8	Good



- 1 | Application: food industry, water and solvents industry, analysis of atmospheric pollution, petroleum derivates, etc.

Plain	Ø (mm)	Box of (units)
PSP043	20	100
PSP044	21	100
PSP045	24	100
PSP046	25	100
PSP047	40	100
PSP048	45	100
PSP049	47	100
PSP050	55	100
PSP051	60	100
PSP052	70	100
PSP053	90	100
PSP054	110	100
PSP055	125	100
PSP056	130	100
PSP057	140	100
PSP058	150	100
PSP059	160	100
PSP060	185	100
PSP061	200	100
PSP062	210	100
PSP063	240	100