

Z

OTHERS

ZC - Cleaning and sterilization.....	432	ZHT - Liquid sampling	445
ZCC - Ultrasonic bath	432	ZHV - Gas sampling gas	445
ZCF - Brushes	433	ZK - Water, food analysis.....	446
ZCH - Paper.....	433	ZKH - Oenology.....	446
ZCK - Autoclaves.....	434	ZKZ - Others	446
ZCM - Autoclaves, accessories	434	ZM - Items f/clinical use	447
ZCZ - Others	436	ZMB - Blood analysis.....	447
ZF - Life sciences	437	ZMC - Surgery.....	449
ZFB - Diagnostic.....	437	ZMD - Urine containers	449
ZFP - Histology	437	ZML - Dental	450
ZFD - Molecular biology	438	ZMZ - Others	450
ZFR - Accessories.....	443	ZZ - Other	452
ZH - Sample preparation	444	ZCZ - Sealing machines.....	452
ZHB - Paddle blenders	444		
ZHN - Bag sampling	444		




ZCC - Ultrasonic bath
▶ Digital ultrasonic bath without heating


- 1 | Includes lid and basket with handles for a better grip.
- 2 | AISI304 stainless steel water resistant tank.
- 3 | The bath does not have external handles due to its small size and easy handling.



Code	ZCC015
Frequency	42 KHz
Tank	AISI304 stainless steel
Capacity	0.8 L
Time control	0-30 minutes, 18 cleaning time optional, digital contr ol
Power supply	AC 220-240,50/60 HZ
Ultrasonic power	35 W
Dimensions	
Tank	168×94×67 mm
Overall	194×120×124 mm
Weight	1.23 kg

▶ Digital with heating


- 1 | Includes lid and basket with handles for a better grip. AISI304 stainless steel water resistant tank. With external grips for better handling of the bath.



YouTube

Code	ZCC016	ZCC017	ZCC019	ZCC020	ZCC021	ZCC018	ZCC022
Capacity (L)	2	3	6	10	15	22	30
Frequency (Hz)	40	40	40	40	40	40	40
Drainage tap	No	No	Yes	Yes	Yes	Yes	Yes
Tank size (LxWxH)	150x140x100	240x140x100	300x155x150	300x240x150	330x300x150	500x300x150	500x300x200
Unit size (LxWxH)	190x170x195	270x160x220	325x180x280	330x270x280	360x330x280	530x330x280	530x330x330
Heating power (W)	100	100	300	400	400	500	500
Ultrasonic power (W)	60	120	180	240	360	480	600
Power supply	220 VAC 50 Hz						
Temperature range	0-80°C (from ambient temperature to 80°C) 1°C in 1°C selection						
Timer	1 – 99 minutes; selection from 1 in 1 minute						
Display	LED, two four-digit LEDs (red colour)						

Accessories

Code	Description	ZCC015	ZCC016	ZCC017	ZCC018	ZCC019	ZCC020	ZCC021	ZCC022
ZCC023	Basket for 0.8 L digital ultrasonic bath	■							
ZCC024	Basket for 2.0 L digital ultrasonic bath		■						
ZCC025	Basket for 3.0 L digital ultrasonic bath			■					
ZCC026	Basket for 22 L digital ultrasonic bath				■				
ZCC027	Basket for 6.0 L digital ultrasonic bath					■			
ZCC028	Basket for 10 L digital ultrasonic bath						■		
ZCC029	Basket for 15 L digital ultrasonic bath							■	
ZCC030	Basket for 30 L digital ultrasonic bath								■



ZCC - Ultrasonic bath

Detergent for ultrasonic baths



- 1 | Formulated to remove general dirt and chemical residues from glass and laboratory instruments.
- 2 | Biodegradable, phosphate-free and concentrated, for mixing 20 mL per liter of water.

Code	Capacity
ZCC004	Container of 1 L

ZCF - Brushes

Type mousse



AUTO
+121°

- 1 | Model n°1 made from fibres. Models n° 2, 3 y 4 made from polyethylene foam that is durable and long lasting.

Code	N°	Total length	For
ZCF001	3	480 mm	Cylinders, test tubes...
ZCF002	2	250 mm	Beakers, flasks, jars.....
ZCF003	1	220 mm	Test tube Ø < 25mm
ZCF004	4	440 mm	Erlenmeyer, separating funnels...

Flexible

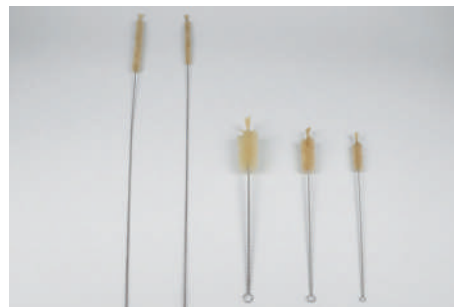


- 1 | Made of flexible rubber coated with polyvinyl chloride and nylon bristles.

Code	Length	Brush (ØxL)
ZCF005	580 mm	30x165 mm
ZCF006	720 mm	45x200 mm

ZCF - Brushes

With tuft



Code	Length	Brush (ØxL)	For
ZCF008	360 mm	15x70 mm	Small tubes
ZCF009	350 mm	25x75 mm	Medium tubes
ZCF010	350 mm	30x85 mm	Large tubes
ZCF015	850 mm	10x180 mm	Burettes 10 mL
ZCF016	870 mm	15x260 mm	Burettes 25 mL

Without tuft



Code	Length	Brush (ØxL)	For
ZCF007	300 mm	10x70 mm	Hemolysis tubes
ZCF011	380 mm	40x110 mm	Cylinders 250 mL
ZCF012	380 mm	50x130 mm	Cylinders 500 mL
ZCF013	440 mm	56x140 mm	Cylinders 1 L
ZCF014	440 mm	80x160 mm	Cylinder, 2 L
ZCF018	500 mm	10x100 mm	Pipettes
ZCF017	450 mm	80x150 mm	Glasses
ZCF019	210 mm	15x70 mm	Tracheal
ZCF020	270 mm	5/10x80 mm	Butyrometers

ZCH - Paper

Slide-dryer paper

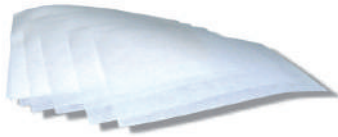


Code	Dimensions	N° sheets
ZCH002	100x40 mm	50 sheets



ZCH - Paper

Lens cleaning



1| Code ZCH012 is supplied in 25 packs of 25 sheets each one.

Code	Dimensions	N° sheets
ZCH012	95 x 135 mm	625
ZCH013	190 x 135 mm	500
ZCH014	190 x 270 mm	500
ZCH015	380 x 540 mm	500

Standard wiping paper



1| 600,2 m of long.

Code	Dimensions	N° sheets/roll	Quantity
ZCH016	240x350 mm	1.715	1 roll

ZCK - Autoclaves

Autester ST DRY PV 18 L and 23 L



- 1| Digital electronic control. Stainless steel internal chamber.
- 2| Staged vacuum purge. Incorporated steam generator. Water reservoir to supply the chamber. High vapour penetration of porous material

Code	ZCK504	ZCK505
Capacity	18 L	23 L
Temperature	121 and 134	121 and 134
Ø x depth	Ø 24,5x38 cm	Ø 24,5x48 cm
External dimensions	40x47x56 cm	40x47x67 cm
Trays dimensions	2x20,5x28 cm	2x20,5x38 cm
Power W	1500 W	1700 W
Weight	46,6 Kg	48 Kg

ZCK - Autoclaves

Autoclave for sterilization "MED 12"



1| Desktop model.

Code	ZCK507
Capacity	12 L
Temperature	121 and 134
Ø x height	Ø 24x26 cm
Exterior dim.	46x38x38 cm
Power W	1800 W
Weight	18 Kg

Autoclave for sterilization "MED 20"



1| Floor-standing model.

Code	ZCK508
Capacity	20 L
Temperature	121 and 134
Ø x height	Ø 24x41 cm
Exterior dim.	70x38x38 cm
Power W	2500 W
Weight	41 Kg

ZCM - Autoclaves, accessories

Autoclave sterilization tape



- 1| Adhesive paper tape. Colour changes from white to brown
- 2| Autoclaving sterilisation 20min at 121°C, 10min at 125°C or 5min at 135°C

Code	Dimensions
ZCM008	50X19 mm



▶ ZCM - Autoclaves, accessories

▶ Dry heat sterilization tape



1 | Color change from white to brown, lead-free. Length 50m and width 19 mm.

Code	Sterilization method
ZCM001	Dry, Poupinel method
ZCM002	Autoclave: 20 min at 121°C, 10 min at 125°C 5 min at 135°

▶ Self-sealing sterilization pouches



1 | Robust, durable material. Quick content identification. Large self-sealing strip, easy to close.

2 | Chevron top seal for easy opening. Suitable for steam and EO gas sterilization

Code	Dimensions	Box of
ZCM009	90x165 mm	200
ZCM010	90x260 mm	200
ZCM011	135x260 mm	200
ZCM012	190x360 mm	200
ZCM013	305x410 mm	200



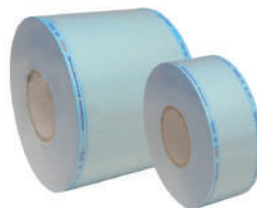
1 | Single use pouches provide easy and effective wrapping of items requiring sterilization. Made with robust medical grade paper, the pouches tightly close with a self-sealing strip to maintain sterility.

2 | Conformity to ISO 17665-06, ISO 11135, CE. Chevron top seal for easy opening. Two sterilization indicators.

Code	Dimensions	Box of
ZCM003	83 x 160 mm	200
ZCM004	90 x 260 mm	200
ZCM005	135 x 260 mm	200
ZCM006	190 x 360 mm	200
ZCM007	300 x 395 mm	200

▶ ZCM - Autoclaves, accessories

▶ Paper reel for sterilization



1 | They consist of a paper base and a transparent plastic cover.

Code	Dimensions
ZCM014	75x200 mm
ZCM015	150x200 mm
ZCM016	200x200 mm
ZCM017	250x200 mm

▶ ZZC - Sealing machines

▶ Sealer for paper bags for sterilization paper reels



For more information, refer to page 449

Code	ZZC002
Sealing width	3 mm
Max. sealing length	300 mm
Max. plastic thickness	0.4 mm
Dimensions	440x85x245* mm
Power	550 W
Weight	3.50 kg

*Height with the sealing arm released

▶ Sterilized Bag Sealing Machine with roller holder



For more information, refer to page 449

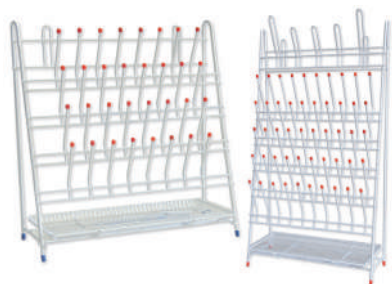
Code	ZZC003
Sealing width	15 mm
Max. sealing length	300 mm
Max. plastic thickness	0.4 mm
Dimensions	370x310x180 mm
Power	300 W
Weight	4.50 kg

* Roll not included



ZCZ - Others

Draining rack



1 | Made of plastic coated steel. Includes drip tray. Can be used as desktop or hanging.

Code	Hangers	HxLxA (mm)
ZCZ001	32	470x360x150
ZCZ002	55	640x360x140
ZCZ017	79	640x360x140

Code	Descripción
ZCZ016	Tray for draining rack ZCZ001, ZCZ002

Draining rack



1 | Wall model, made of polypropylene. 20 detachable posts.

Code	Dimensions
ZCZ003	500x350x100 mm

Wall draining rack



- 1 | Made of shockproof polystyrene, it does not oxidize or peel.
- 2 | One-piece mould and drainage channel without connecting lines.
- 3 | Includes wall fixing hooks, drainage kit (joint+tube) and 72 supports (95x15 mm) + 11 supports (95x6 mm). Support plate thickness: 4 mm.

Code	Hangers	Dimensions
ZCZ004	72	450x63x110 mm

ZCZ - Others

Maxi pipette washer



- 1 | Made of polyethylene and polypropylene. Siphon drainage system.
- 2 | Ref. ZCZ007 admits pipettes max. 100 mL or Mohr burettes.

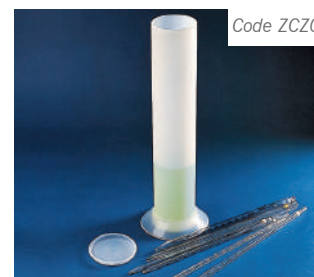
Code	Diameter	Height
ZCZ007	165 mm	990 mm
ZCZ008	165 mm	734 mm

Pipette jar



Code	Diameter	Height
ZCZ009	162 mm	650 mm
ZCZ010	162 mm	500 mm

Pipette basket



Code	Diameter	Height
ZCZ012	145 mm	648 mm
ZCZ013	145 mm	497 mm
ZCZ014	82 mm	410 mm



ZFB - Diagnostic

Multiparameter monitor Axavet 12M

LowPulseStr™ SPO2 algorithm for more reliable SO2 readings during low perfusion and movement. **PIV / PI** perfusion index and plethysmographic variability index, for fluid response prediction. **iFastBP™ NIBP** algorithm used for quick and comfortable measurement of NIBP. **wS artHeart™ ECG** for safer analysis and monitoring of heart rate. **iRealResp™** respiratory rate technology for real-time readings. **wSmartGas™** capnograph technology for reliable readings in multiple environments. **EtCO2 / FiCO2** capnography in modular architecture.

Code	ZFB009
Display	12,1" touch screen
Output	Built-in thermal printer
Battery	Lithium
Weight	5,0 Kg
Dimensions	30x15x30 cm

Accessories

Code	Description
ZFB010	5-lead ECG cable for animal
ZFB011	SPO2 probe (small and big size)
ZFB012	SPO2 extension cable
ZFB013	Extension tube for NIBP cuff 1 pc
ZFB015	Temperature probe for vet 1 pc rectal
ZFB016	Tinistream Water Trap,



ZFP - Histology

Paraffin dispensing unit

- 1 | Large-capacity paraffin tank. Fast and uniform heating.
- 2 | Control panel with LCD screen. The paraffin dispensing faucet can be operated manually or with a foot pedal (included).
- 3 | Work table with low-voltage lighting. Small cold spot on the work table.
- 4 | Collection tank for collecting excess paraffin from the work table.
- 4 | Memory function and automatic recovery; the automated control system allows for preprogramming the equipment's on and off times at the desired temperature.

Code	ZFP006
Paraffin reservoir capacity	5L
Capacity	120 moulds 140 cassettes*
Max. set point temp. of hot zones	99°C, step of ± 1 °C
Temp. range of the small cold spot	-5°C a -20°C, step of ± 1 °C
Working environment temp.	0°C - 40 °C
Power supply	220VAC, 50Hz
Power consumption	1800W/10A

* in each reservoir



Paraffin dispensing unit

- 1 | Temperature regulation up to 99°C.
- 2 | Dispensing faucet activated by an ON/OFF button.
- 3 | Programmable start and end time for heating.

Code	ZFP013
Deposit capacity	5 L
Programmable parameters	Start and end time / temperature
Dimensions	410x440x360 mm
Power	220 V, 50 Hz




ZFP - Histology

- ▶ Digital flotation bath for tissue sections



- 1 | Black tray for optimal localization of the cuts.
- 2 | Thermal edge for drying the samples.

Code	ZFP008
Capacity	2L (approx.)
Temperature range	Room temperature to 90°C
Dimensions (chamber)	240x180x54 mm
Dimensions (equipment)	340x350x105 mm

- ▶ Digital flotation bath for tissue sections

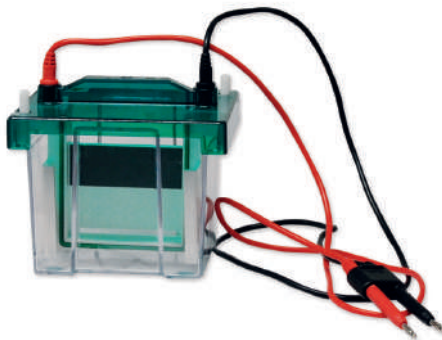


- 1 | For drying the slides.

Code	ZFP009
Temperature range	Room temperature up to 90°
Chamber dimensions	34x25 cm
Total dimensions	34x25x10.5 cm


ZFD - Molecular biology

- ▶ Vertical electrophoresis cell



- 1 | Electrophoresis is a technique that uses polyacrylamide gels (PAGE).
- 2 | High transparency polycarbonate material, injection-molded, resistant to impacts, high temperatures, and corrosive agents.
- 3 | Accessories included: 12 combs, 2 wedged-shaped plates, 1 gel shovel, 1 dummy plate, 2 spacer plates with 0.75 mm spacer, 2 spacer plates with 0.75 mm spacer, 2 spacer plates with 1.5 mm spacer and 4 concave plates.

Code	ZFD005
Number of gels	1 or 2
Gel size (WxL)	82x88 mm
Glass plate size (WxL)	100x100 mm
Gel thickness	0,75 mm / 1,0 mm / 1,5 mm
Number of samples	11 or 15 per gel
Buffer volume	750 mL
Dimensions (LxAxH)	150x120x115 mm
Net weight	1,5 kg

- ▶ Vertical electrophoresis cell



- 1 | Installation takes just 15 seconds, ensuring efficient preparation.
- 2 | Supports 1 to 4 mini polyacrylamide gels, either prefabricated or hand-cast.
- 3 | Complete: Tank, lid with electrodes, gel support, gel casting device, plane and notched glass plates and set of combs

Code	ZFD024
Number of gels	1 or 4
Gel size (WxL)	82x88 mm
Glass plate size (WxL)	100x100 mm
Gel thickness	1,0 mm / 1,5 mm
Number of samples	11 or 60
Buffer volume	1000 mL
Dimensions (LxAxH) / Net weight	220x170x12 mm / 2,5 kg

ZFD - Molecular biology

Vertical electrophoresis cell



1 | Quick installation of glass plates in 15 seconds, without screws. Ensures cooling and stable pH thanks to abundant buffer. Automatic shutdown when the lid is removed.

Accessories Reference ZFD025 (included):

2 modular devices (rubber bases for gel preparation), 4 glass plate fixing clips, 2 combs, 1 mm, 52 teeth, 2 combs, 1 mm, 40 teeth, Combs, 1 mm, 25 teeth, Spacers: 4 x 1 mm, 4 concave plates, 1 double transfer module, 1 glass dropper pipette

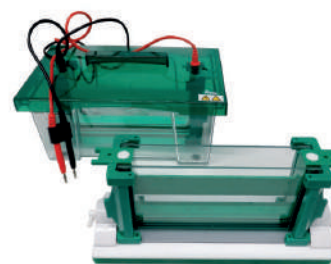
Accessories Reference ZFD026 (included):

2 combs, 1 mm, 52 teeth, 2 combs, 1 mm, 40 teeth, 2 combs, 1 mm, 25 teeth, 1 double transfer module, Spacers: 4 x 1 mm, 4 concave plates, 1 base for gel casting, 1 double core for casting, 3 grooved guides

Code	ZFD025	ZFD026
Number of gels		1 or 2
Included Accessories	Refer to the text of the included accessories	
Gel size (WxL)	186x95 mm	
Glass plate size (WxL)	216x110 mm	
Gel thickness	1,0 mm	
Number of samples	25 to 104	
Buffer volume	2200 mL	
Dimensions (LxAxH)	300x190x129 mm	
Net weight	3.2 kg	



Code ZFD025



Code ZFD026

Vertical electrophoresis cell



1 | Glass plate installation can be completed in 15 seconds without the need to screw buttons, making it quick and easy.

2 | It not only ensures a cooling effect but also maintains a stable pH throughout the process thanks to abundant buffering.

3 | Automatic shutdown when the lid is removed.

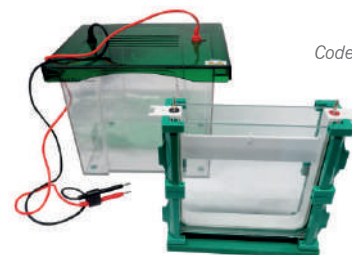
Accessories Reference ZFD027 (included):

2 modular devices (rubber bases for gel preparation), 12 glass plate fixing clips, 2 combs, 1 mm (52 teeth), 2 combs, 1 mm (40 teeth), 2 combs, 1 mm (25 teeth) Spacers: 4 x 1 mm, 4 concave plates, 1 double transfer module, 1 glass dropper pipette

Accessories Reference ZFD028 (included):

2 combs, 1 mm (52 teeth), 2 combs, 1 mm (40 teeth), 2 combs, 1 mm (25 teeth), 1 double transfer module, Spacers: 4 x 1 mm, 4 concave plates, 1 base for gel casting 1 double core for casting, 3 grooved guides

Code	ZFD027	ZFD028
Included Accessories	Refer to the text of the included accessories	
Number of gels	1 to 2	
Gel size (WxL)	186x205 mm	
Glass plate size (WxL)	216x220 mm	
Gel thickness	1,0 mm	
Number of samples	25 to 104	25, 40, 52 Wells
Buffer volume	8000 mL	
Dimensions (LxAxH)	320x240x230 mm	
Net weight	5.6 kg	6.2 kg



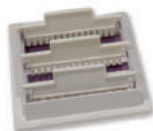
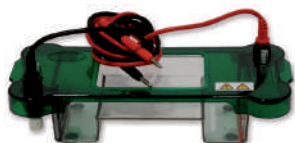
Code ZFD027



Code ZFD028


ZFD - Molecular biology
▶ Horizontal electrophoresis cell

Code ZFD013



Code ZFD021



Code ZFD022



1 | The tanks are made of high-quality materials, resistant to impact, high temperatures, and corrosive agents. The required buffer volume is sufficient to ensure both cooling and pH stability throughout the process.

2 | Transparent lids provide effective sealing to prevent buffer evaporation and electrical leaks. Automatic shutdown function when the lid is removed.

3 | Included accessories: molds for gel preparation, gel trays, and a set of combs with different thicknesses and well numbers.

Code	ZFD013	ZFD020	ZFD021
Gel size (WxL)	78x100 mm	48x75 mm	120x120 mm 120x60 mm 60x120 mm 60x60 mm
Capacity	10-30	3-18	1-100
Combs	10/15	3/5/9	1/2/3/6/8/11/13/18/25
Comb Thickness	1 and 2 mm	1 and 1,5 mm	1 and 1,5 mm
Buffer Volume (approx.)	400 mL	150 mL	550 mL
Maximum Voltage	150 V	100 V	200 V
Dimensions (LxAxH)	365x105x55 mm	250x90x50 mm	300x160x75 mm

Code	ZFD022	ZFD023
Gel size (WxL)	140x140 mm 140x70 mm 70x70 mm	200x200mm 200x150 mm 200x100 mm
Capacity	1-116	16-264
Combs	1/2/3/6/8/13/14/19/29	17/22/36/44
Comb Thickness	1 and 1,5 mm	1 and 2 mm
Buffer Volume (approx.)	900 mL	1800 mL
Maximum Voltage	250 V	500 V
Dimensions (LxAxH)	390x187x63 mm	397x230x93 mm

▶ Transfer module


1 | For transfer of proteins from polyacrylamide gels (Western Blot).

2 | Support with platinum electrodes.

3 | Color coded to ensure correct gel orientation during transfer process.

4 | Compatible with external tank of the vertical electrophoresis cell and power supply ref. ZFD014.

5 | It includes:

- 2 polycarbonate cassettes with perforated plates.
- 4 cushions.

Code	ZFD006
Pore plate dimensions	95 x 87 mm
Buffer	500 mL
Working conditions	0-40°C; ≤80% HR

ZFD - Molecular biology

Thermal cycler TC1000

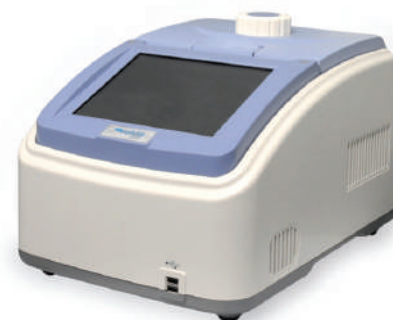
- 1 | With high-performance Peltier effect and independent heating segments for better temperature control.
- 2 | Temperature gradient adjustment for easy temperature optimization in a single operation. Color touch screen with user-friendly interface for easy program editing.
- 3 | Wide range of consumable options: common PCR tubes, 8-tube PCR strips and 96-well PCR plates can be used.
- 4 | Power failure protection function, automatic program recovery. Heated lid auto-shutdown function: if the module temperature is below 30°C, the heated lid function is automatically deactivated.



Code	ZFD017
Model	TC1000-S
Capacity	96 x 0.2 mL PCR tubes 96-well PCR microplate 12 x 8 0.2 mL PCR strip tubes
Temperature range	4 - 105°C
Lid temperature range	30-110 °C
Temperature display accuracy	± 0,1 °C
Accuracy of temperature display at 55°C	± 0,3 °C
Temperature uniformity at 55°C	< 0,3 °C
Max. heating/cooling speed	5°C/sec
Adapter block material	Aluminum
Display	7" LCD 800x480
User-defined file system	Max. 30 segments 99 cycles Storage of over 200 files
Power supply	100-240 V / 50-60 Hz
Dimensions	280 x 370 x 250 mm

Thermal Cycler GET-S

- 1 | Six long-life Peltier heating units form 3 circuits to control 3 temperature zones.
- 2 | Continuously adjustable heating cover adapts to different tube heights to prevent melting and evaporation.
- 3 | It incorporates 11 standard program file templates, so you can quickly edit the files you need.
- 4 | The fast, one-click incubation function can meet the needs of experiments such as denaturation, enzyme cleavage/binding and ELISA.



Code	ZFD019
Capacity	96x0,2 mL
Temperature range	0-105 °C
Maximum heating rate	4,5 °C/s
Maximum cooling speed	4 °C/s
Temperature uniformity	≤±0,2 °C
Temperature accuracy	≤±0,1 °C
Resolution	0,1 °C
Adjustable temperature ranges	0,1-4,5 °C
Gradient range	30-105 °C
Gradient differential	1-30 °C
Hot lid temperature	30-110 °C
Number of programs	10000+ (FLASH USB)
Maximum number of steps	30
Maximum number of cycles	200
Time increase/decrease	1 sec - 600 sec
Temperature increase/decrease	0,1-10,0 °C
Touchscreen	8 - inch, 800x600 pixels, TFT
Communication	USB2.0, LAN, WiFi
Languages	French / English / Spanish
Dimensions (LxLxH)	390 mmx270 mmx255 mm
Weight	9 kg
Power supply	100-240VAC, 50/60Hz, 600W




ZFP - Histology
▶ Cold plate f/parafin dispensing unit


1 | Cold plate for kerosene dispensing unit. Capacity: 40 to 50 molds.

Code	ZFP007
Temperature	down to -20 °C
Plate dimensions	300x250 mm
Overall dimensions	525x362x370 mm
Weight	23 Kg
Power supply	220v 50 Hz

▶ Hand microtome 512


- 1 | Hand microtome with a wooden case. Includes a folding blade.
- 2 | Brass platform of 63 mm. Centered hole with a diameter of 23 mm to hold samples.
- 3 | Inscribed on the body of the microtome: 1 DIV = 10 μ .

Code	ZFP014
Centered hole diameter	23 mm
Min. cutting thickness	10 microns
Scale	50 divisions

▶ Manual rotary microtome, basic


- 1 | Smooth manual handwheel with an internal locking system.
- 2 | Micrometric screw at the base for advancing the specimen. Sample holder with an orientation system.
- 3 | Supplied with a 12 cm biplane blade; the equipment is also compatible with the blade holder for disposable blades ref. ZFR008 (not included).
- 4 | The blade holder base can be moved forward, backward, and sideways.

Code	ZFP010
Section thickness	1-25 μ m
Min. adjustment	1 μ m
Precision	\pm 10%
Max. specimen size	25x35 mm
Blade orientation angle	0-10°
Horizontal sample stroke	35 mm
Vertical sample stroke	46 mm
Dimensions (LxWxH)	350x350x270 mm
Weight	26 Kg

▶ Manual rotary microtome, advanced


- 1 | Robust and easy-to-clean design.
- 2 | Smooth manual handwheel with ergonomic handle and locking system.
- 3 | Macro advance handwheel with a lowered position for easy access.
- 4 | Blade holder base for high and low-profile disposable blades with lateral adjustment mechanism and foldable finger guard.
- 5 | Standard sample holder and cassette holder; compatible with plastic slide holder.

Code	ZFP011
Cutting thickness adjustment	Of 0.5-2 μ m in steps of 0.5 μ m Of 2-10 μ m in steps of 1 μ m Of 10-20 μ m in steps of 2 μ m Of 20-60 μ m in steps of 5 μ m
Section thickness	0.5-60 μ m
Precision	\pm 5%
Max. specimen size	50x45 mm
Blade orientation angle	0-12°
Coarse feed	Manual, by coarse feed wheel
Horizontal sample stroke	35 mm
Vertical sample stroke	46 mm
Sample orientation	8° (X-Y axis); rotatable 360°
Dimensions (LxWxH)	300x570x270 mm
Weight	34 Kg



ZFP - Histology

Rotary microtome semi-automatic



- 1| Robust, comfortable, and easy-to-clean design.
- 2| User safety features include a blade holder for disposable blades with a foldable finger guard and a locking system for the manual handwheel in any position.
- 3| Touchscreen for adjusting and controlling parameters: motorized forward and reverse movement of the specimen, cutting thickness, trimming thickness, and slice count.
- 4| Smooth manual handwheel with an ergonomic handle.
- 5| Blade holder base for disposable blades with a lateral adjustment mechanism.
- 6| Includes standard sample holder and universal cassette holder; compatible with plastic slide holder.



Code	ZFP012
Section thickness range	0.5-100 μm
Section thickness setting value	Of 0.5-2 μm in 0.5 μm increments Of 2-10 μm in 1 μm increments Of 10-20 μm in 2 μm increments Of 20-50 μm in 5 μm increments Of 50-100 μm in 10 μm increments
Trimming section thickness range	5-500 μm
Trimming thickness setting	Of 5-100 μm in 10 μm increments Of 100-200 μm in 20 μm increments Of 200-500 μm in 50 μm increments
Horizontal sample stroke	20 mm, motorized
Vertical sample stroke	60 mm
Sample retraction	12 μm
Precision	\pm 5%
Max. Specimen size	50x45 mm
Blade orientation angle	0-14°
Sample orientation	8° (X-Y axis); rotatable 360°
Dimensions (LxWxH)	520x450x300 mm
Weight	30 Kg
Power	220 V / 50 Hz

ZFR - Accessories



Code ZFR008 - Blade holder for disposable blades



Code ZFR010 - Knife handle for disposable blades



Code ZFR011 - Blade holder for disposable blades



Code ZFR012 - Clamp for plastic plate for microtome semi-automatic



Code ZFR013 - Steel knife 120 mm
Code ZFR014 - Steel knife 160 mm



Code ZFR010 - Knife handle for disposable knife

Code	Description	501 ZFP014	Basic ZFP010	Advanced ZFP011	Semi-automatic ZFP012
ZFR008	Blade holder for disposable blades Stainless steel, dimensions 170 x 30 x 10 mm		■		
ZFR010	Handle for disposable blades	■			
ZFR011	Plastic slide holder For making sections of plastic slides such as HDPE			■	
ZFR012	Plastic sheet holder For making sections of plastic sheets such as HDPE				■
ZFR013	Biplane blade 120 mm		■		
ZFR014	Biplane blade 160 mm		■		
ZFR015	Low profile blade carrier for advanced microtome			■	

* Accessories compatible with the specified equipment.

ZHB - Paddle blenders
Paddle blenders


- 1 | Made of stainless steel for sample volumes between 3 and 400 mL.
- 2 | Front door with glass window for sample monitoring. Removable for easy cleaning. Digital and touchscreen display.
- 3 | Homogenization time and impact frequency. Memory for 8 samples.
- 4 | Distance adjustment mechanism and impact force.

Code	ZHB002
Capacity	3 - 400 mL
Timer	1 sec – 100 hours
Blade speed	3 – 12 strokes/seg
Blade distance	0 – 50 mm
Bag size	17 x 30 cm
Ambient temperature	0 - 35 °C
Power supply	220V/50Hz
Consumption	200W
Dimensions	420 x 230 x 330 mm
Net weight	19 kg

Pipette dilution Acura 810, 1 mL + 0.1 mL


AUTO
+121°



- 1 | Two pre-calibrated volumes – no adjustments required.
- 2 | Smooth activation, excellent ergonomics.
- 3 | Interchangeable nozzle protection with a PE filter.
- 4 | Justip™ system for height adjustment of the tip ejector.
- 5 | Independent calibration for each volume. Fully autoclavable at 121°C.

Code	Accuracy (E%)	Precision (CV %)	Volume
MGR001	< ± 0.5%	< 0.4%	1 mL
	< ± 2.0%	< 2.5%	0.1 mL

Values obtained with double-distilled water at a constant temperature (± 0.5°C) between 20 and 25°C, in accordance with ISO 8655 standards.

Acura® dilution 810 Accessories


Code	Description	Pack
MGY006	Filter PE 6.3x2.5 mm	100 units

ZHN - Bag sampling
Bag sampler


- 1 | Very sharp lance for easy puncturing of the sack.
- 2 | No crevices for easy cleaning and avoid cross contamination.

Code	ZHN001
Material	316 L stainless steel
Length	400 mm
Inner diameter	22.3 mm
External diameter	25.4 mm

ZHB - Paddle blenders

Emulsifier Homogenizer



- 1 | LED display for speed control (2000 - 28000 rpm).
- 2 | SS316 stainless steel head, with stirring capacity between 50 and 1500 mL. Designed for various purposes: grinding, homogenizing, emulsifying, polymerizing, suspending, and stirring.
- 3 | The speed at which the rotor spins results in a high angular and tangential circumferential speed that draws material from the bottom of the rotor and ejects it through the stator opening with great centrifugal force.
- 4 | Includes: body without head (1 unit), base (1 unit), support rod (2 units), fixing bar (1 unit), and nut (1 unit).

Code	ZHB003
Power supply	220 VAC, 50/60 Hz
Input power	850 W
Output power	500 W
Nominal torque	17.1 N·cm
Operating modes	Continuous/Timer
Speed regulation	Continuous
Speed range	2000 - 28000 rpm
Display	LED
Timer range	1 - 1000 min
Speed memory function	Yes
Overload protection	Yes
Needles	12G/18G



ZHT - Liquid sampling

PTFE beaker dipper



- 1 | Made of PTFE (Teflon)
- 2 | Excellent chemical and mechanical resistance
- 3 | Withstands temper temperatures up to +260°C and for short intervals up to +340°C

Code	Capacity
ZHT005	100 mL
ZHT006	250 mL
ZHT007	500 mL
ZHT008	1000 mL



ZHV - Gas sampling gas

Balloons for gas sampling



- 1 | Made of latex.

Code	Diameter	Volume
ZHV006	130 mm	1 L / 1000 cc
ZHV007	150 mm	1,5 L / 1500 cc
ZHV008	160 mm	2 L / 2000 cc
ZHV009	200 mm	4 L / 4000 cc
ZHV010	230 mm	5 L / 5000 cc
ZHV011	250 mm	8 L / 8000 cc



ZHV - Gas sampling gas
Gas sampling bag Chemware


- 1 | Bags made of Tedlar (difluorinated polyvinyl) with a thickness of about 0.2 mm, are used for taking samples of liquids or non-corrosive gases.
- 2 | Bags made of FEP (fluoropolymer) with a thickness of around 0.5 mm offer very good chemical resistance.

Code	Material	Capacity	Lock	Dim.
ZHV012	FEP	1,2 L	Valve on / off	150x250 mm
ZHV013	FEP	0,5 L	Valve on / off	150x150 mm
ZHV014	FEP	4,7 L	Valve on / off	300x300 mm
ZHV015	FEP	50 L	Valve on / off	600x900 mm
ZHV023	Tedlar	8,1 L	Valve on / off	380x380 mm
ZHV027	Tedlar	1,6 L	Septum	230x230 mm

ZKH - Oenology
Distilling Super DEE without steam generator


- 1 | According to the official method for determining the volumetric alcohol content in wines, musts, and alcoholic beverages (EU Regulations 2676/90 and 2870/2000) and for volatile acidity.

Code	ZKH507, ZKH508
Wine distillation	100 mL in 3÷4 minutes – 200 mL in 5÷6 min
Volatile acidity	250 mL in 6÷7 minutes
Distillation of spirits	in 4÷8 minutes

ZKZ - Others
Digester apparatus for trichinella

Composed of:

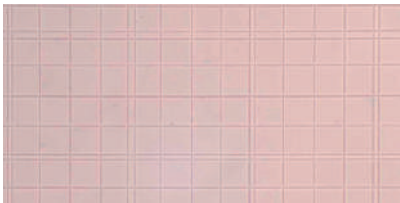
<i>LBD009</i> : Digital magnetic stirrer with heating	<i>FCG001</i> : Two-finger clamp without nut, 12-45 mm
<i>PQB030</i> : 2L open decantation funnel for trichina equipment	<i>FCP002</i> : Medium painted double nut, 16 mm (3 pcs)
<i>PQL006</i> : 50mL open cylindrical funnel for trichina equipment	<i>CBC025</i> : Low-form beaker 3000 mL
<i>ZKZ002</i> : Sieve 100x40, 180 µm	<i>LDB011</i> : Teflon-coated cylindrical magnet 55x8 mm
<i>FCB023</i> : Plate support stand 300x175 mm with rod 10x600 mm	<i>DBG003</i> : Graduated glass cylinder, 25 mL
<i>FCV004</i> : Ring with spike 105 mm, chrome steel	<i>DGJ010</i> : Graduated pipette 25 mL / 0.1 mL
<i>FCR002</i> : Ring with spike 65 mm, chrome steel	<i>MBJ009</i> : Pipette aspirator, 25 mL red
	<i>LDR010</i> : PP stirring rod
	<i>BRB012</i> : Bag of 20 grid Rodac plates

The equipment is supplied in its standard configuration but can be expanded with the following items:

- KBC001: Precision balance 300g/0.01g, series 5162
- HDD011: Stereo microscopes series Z
- FMJ010: Dissection forceps 1:2 teeth, 160 mm
- FMN011: Straight scissors sharp-sharp, 160 mm
- KKF002: Pocket watch 24 h, 1 memory
- DGJ005: Graduated pipette, 1 mL / 0.01 mL
- DGJ008: Graduated pipette, 10 mL / 0.1 mL

Code	Description
ZKZ001	Digester apparatus for trichinella

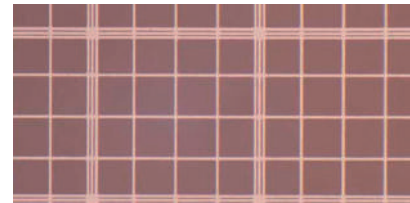
ZMB - Blood analysis



[1] STANDARD: The grid is engraved on the background of the counting chamber and appears under the microscope as a pattern of dark lines.



[2] WITH CLAWS: Similar to the standard format but with two claws that ensure optimal holding of the coverslip.



[3] LIGHT LINES: The background of the chamber features a rhodium coating (dark background) on which the grid is engraved, achieving optimal contrast.

	Brand	Standard double	Standard single	With claws double	Light lines double
Neubauer Improved	PRECISS EUROPE (CE)	ZMB027	ZMB030	ZMB028	ZMB029
Bürker	PRECISS EUROPE (CE)	ZMB013	ZMB016		ZMB015
Fuchs-Rosenthal	PRECISS EUROPE (CE)	ZMB017	ZMB020	ZMB018	ZMB019
Thoma	PRECISS EUROPE (CE)	ZMB031	ZMB034	ZMB032	ZMB033
Malassez	PRECISS EUROPE (CE)	ZMB021	ZMB024		

Burker counting chamber



- 1 | Depth: 0.100 mm. Volume in 1 mm²: 0.1 µL
- 2 | Minimum area: 0.0025 mm². They are mainly used for counting erythrocytes and platelets.
- 3 | With CE certification (IVD).

Code	Format
ZMB013	[1] Standard, dark lines double grid
ZMB015	[3] Light lines double grid
ZMB016	[1] Standard, dark lines single grid



Counting chamber CE Fuchs-Rosenthal



- 1 | Depth: 0.200 mm. Volume in 1 mm²: 0.2 µL
- 2 | Minimum area: 0.0625 mm². They are mainly used for counting cells in cerebrospinal fluid (CSF).
- 3 | With CE certification (IVD).

Code	Format
ZMB017	[1] Standard, dark lines double grid
ZMB018	[2] With claws, dark lines double grid
ZMB019	[3] Light lines double grid
ZMB020	[1] Standard, dark lines single grid



Counting chamber CE Malassez



- 1 | Depth: 0.200 mm. Volume in 1 mm²: 0.2 µL
- 2 | Minimum area: 0.0025 mm²
- 3 | They are mainly used for counting blood cells.
- 4 | With CE certification (IVD).

Code	Format
ZMB021	[1] Standard, dark lines double grid
ZMB024	[1] Standard, dark lines single grid



ZMB - Blood analysis
Neubauer improved counting chamber


- 1 | Depth: 0.100 mm. Volume in 1 mm²: 0.1 μL
- 2 | Minimum area: 0.0025 mm². They are mainly used for counting erythrocytes, platelets, and leukocytes. With CE certification (IVD).

Code	Format
ZMB027	[1] Standard, dark lines double grid
ZMB028	[2] With claws, dark lines double grid
ZMB029	[3] Light lines double grid
ZMB030	[1] Standard, dark lines single grid
ZMB050	[3] With claws, light lines double grid
ZMB053	[1] Standard, single grid

Thoma counting chamber


- 1 | Depth: 0.100 mm. Volume in 1 mm²: 0.1 μL
- 2 | Minimum area: 0.0025 mm². They are mainly used for counting erythrocytes and platelets.
- 3 | With CE certification (IVD)

Code	Format
ZMB031	[1] Standard, dark lines double grid
ZMB032	[2] With claws, dark lines double grid
ZMB033	[3] Light lines double grid
ZMB034	[1] Standard, dark lines single grid

Coverglasses


- 1 | Made of soda glass, with cut edges.
- 2 | Thickness of 0.4 mm.
- 3 | Supplied in boxes of 10 units.

Code	Dimension
ZMB036	20x26 cm
ZMB037	22x22 cm
ZMB038	24x24 mm

ZMB - Blood analysis
Sedirate pipette

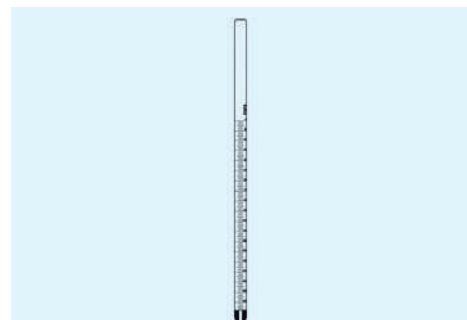

- 1 | This system allows a fast and safe execution of the Erythrocyte sedimentation rate according to the Westergreen code method.
- 2 | Composed of the following independent elements:

Code	Description	N° PCS
ZMB039	PE pipettes graduated from 0-180 mm	2400
ZMB044	PP tubes, labelled, pipette included	800
ZMB045	PP holder with 10 numbered spaces	12

Microhaematocrit capillaries


- 1 | Disposable and easily sealed at one end.

Code	Volume	Length	Hepariniz.	Pack
ZMB047	75 μL	75 mm	No box	200 units
ZMB048	35 μL	40 mm	No box	100 units

Westergreen pipette


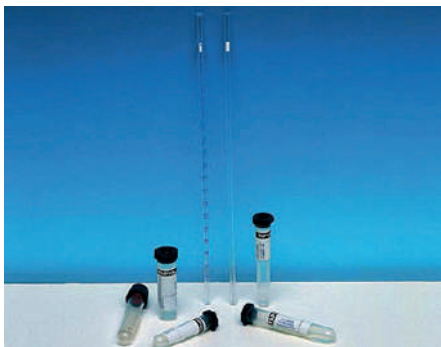
- 1 | Analyses the speed of erythrocyte sedimentation in blood.

Code	Material	Total length	Capacity
ZMB058	Lime soda glass	300 ± 2 mm	0 - 200 mm



ZMB - Blood analysis

Tube AQUISEL



Code	mL blood	Content/Reactive	Type	C.Stopper
ZMB510	4 mL	EDTA K3	Liquid	Purple
ZMB512	1 mL	EDTA K3	Liquid	Purple
ZMB513	4 mL	Citrate	Liquid	Blue
ZMB514	1 mL	Lithium Héparine	Liquid	Green
ZMB515	1 mL	Lithium Héparine	Liquid	Green

ZMC - Surgery

AXAVET OLV-5 Oxygen Concentrator



- 1 | Fully automatic and easy operation
- 2 | Compact and silent
- 3 | Requires very little space
- 4 | With supply cut-off alarm
- 5 | Includes nebuliser cup
- 6 | Easy maintenance

Code	ZMC017
Oxygen purity	≥ 93% ±3%
Output pressure	100-115 kPa
Flow rate range	0-5 L/min
Noise level	< 45 dB
Power consumption	500 W
Power supply	100-240 V AC, 50/60 Hz
Dimensions (LxWxH)	490x270x560 mm
Weight	22 kg

ZMC - Surgery

Oxygen concentrator AXAVET OLV-10S



- 1 | Fully automatic and easy to operate
- 2 | Compact and quiet
- 3 | Requires very little space
- 4 | With power failure alarm
- 5 | Includes nebuliser cup
- 6 | Easy to maintain

Code	ZMC024
Model	OLV-10S
Flow range	0-10 l/min
Oxygen purity	93 %±3 %
Output pressure	140 kPa
Noise level	50 dB(A)
Noise level of the alarm signal	>40 dB(A)
Energy consumption	800 W
Power supply	100-240 V AC, 50/60 Hz
Dimensions (LxWxH)	350x250x670 mm
Weight	28 Kg

ZMD - Urine containers

Urine tank



- 1 | Made of polystyrene
- 2 | Graduated up to 2500 mL
- 3 | Supplied with cap for easy sampling

Code	ZMD001	ZMD002
Mouth diameter	74 mm	74 mm
Dimensions	114x243x160 mm (AxLxH)	130x250 (ØxH)
Graduation	Every 250 mL	Every 100 mL



ZMD - Urine containers

Male bed bottle



1 | Made of polystyrene

Code	ZMD004
Capacity	1 L

PP Specimen container with screw cap



1 | Made of high-quality polystyrene or polypropylene. Polypropylene containers can resist temperatures up to 121 °C and can be autoclaved.
2 | Clear embossed graduation for easy reading.
3 | Screw cap.

Code	Material	Volume (mL)	Packaging
ZMD010	PS	30	1000 pcs / box
ZMD011	PP	60	500 pcs / box
ZMD012	PP	90	400 pcs / box
ZMD013	PP	120	250 pcs / box

Collector



1 | With raised scale.
2 | PC cover for collecting jugs ref.: ZMD501, ZMD505, ZMD506

Code	Material	Volume	Division	Height	Diameter
ZMD501	SAN	2000 mL	20 mL	220	150
ZMD505	PP	2000 mL	20 mL	220	150
ZMD506	PP	2000 mL	20 mL	220	150

ZML - Dental

Mobile Cart Veterinary Dental Unit, BDS-05 model



Code	ZML023
-------------	--------

1 | Dental unit mounted on a height-adjustable trolley, white-painted steel, oil-free 12L compressor with automatic purge, noise <65 dB. Single foot control. Single power cable. Dual hydraulic system (water/antiseptic). Automatic selection of handpieces. Independent controls for irrigation quantity and atomization of irrigation. Floor dimensions 43x40 cm, adjustable height 90–105 cm. 5 positions for handpieces:
- Position 1: High-speed turbine 330,000–390,000 rpm with irrigation and self-generated LED light.
- Position 2: Polishing micromotor 5,000–20,000 rpm with external irrigation, irrigation tube, 1:1 contra-angle with push-button closure.
- Position 3: Piezo-electric dental scaler Woodpecker LED, 6 tips, tip wrench.
- Position 4: Water/air/spray syringe with autoclavable tip, 360° rotation.
- Position 5: Liquid suction with atraumatic flexible cannula, with atraumatic flexible cannula.

ZMZ - Others

Douche cans



1 | Made of polypropylene.
2 | Autoclavable.
3 | Provided with flat back and suspension tag.

Code	ZMZ002
Capacity	2 L
External tube diameter	9,90 mm



ZMZ - Others

Fetal flask



Code	Dimension	With lid
ZMZ003	50x150 mm	No
ZMZ004	50x200 mm	No
ZMZ006	80x300 mm	No

Douche cans



- 1 | Borosilicate glass.
- 2 | With rim.

Code	Can diameter	Mouth diameter	Height
ZMZ008	60 mm	80 mm	200 mm
ZMZ010	60 mm	80 mm	300 mm

AXAVET EN-V5 Vet Infusion Pump



- 1 | Large touch screen for clear display of parameters including remaining infusion time.
- 2 | Compatible with standard droppers. Holder for serum carrier included.

Code	ZMZ015
Accuracy	± 5 %
Air bubble detection	20, 50, 100, 200, 400, 800 µl
Power supply	100-240VAC, 50/60 Hz
Dimensions (LxWxH)	14x13x9 cm
Weight	1,45 kg

ZMZ - Others

AXAVET EN-V3 Vet Infusion Pump



- 1 | 2.8" screen for clear visualization of parameters, including the remaining infusion time.
- 2 | Various settings available, such as total infusion volume, required flow rate, and total infusion time.

Code	ZMZ020
Accuracy	± 5 %
Air Bubble Detection	5 levels (50, 100, 200, 400, 1000 µl)
Occlusion Settings	4 levels (150, 300, 600, 900 mm Hg)
Data Review	2000 levels
Protection Class	IP44
Power Supply	100-240VAC, 50/60 Hz
Dimensions (LxHxW)	14x13x9 cm
Weight	1,45 kg

AXAVET EN-V5H Vet Infusion Pump with Heating



- 1 | Various settings available, such as total infusion volume, required flow rate, and total infusion time.
- 2 | 4.3-inch color touchscreen.
- 3 | Long battery life, up to 10 hours of infusion. Suitable for transfusions. Compatible with standard drip sets.
- 4 | Compatible with standard drip sets. Includes IV pole holder. Modes: flow and volume, total time and volume, total time and flow, body weight, recorded modes, micro mode.

Code	ZMZ021
Accumulated Volume	From 0.1 to 9999 mL
Accuracy	± 5 %
Air Bubble Detection	6 levels (20, 50, 100, 200, 400, 800 µl)
Occlusion Settings	5 levels (50, 150, 300, 600, 900 mmHg)
Data Review	5000 records
Protection Class	IP44
Power Supply	100-240VAC, 50/60 Hz
Dimensions (LxHxW)	13x9x14 cm
Weight	1,95 kg


ZZC - Sealing machines
▶ Sealer for paper bags to sterilize


- 1| Made of aluminum, with 4 rubber feet on the base.
- 2| Easy to use: simply press and release. Manual cutting via sliding blade.
- 3| Reduced power consumption as energy is only used when the sealing arm is pressed.
- 4| Adjustable control with 8 levels to set heating time in seconds, depending on the material thickness.
- 5| Red indicator light during the heating time.
- 6| Includes a spare blade, 2 PTFE sealing sheets, and 2 heating elements.

Code	ZZC002
Sealing Width	3 mm
Maximum Sealing Length	300 mm
Maximum Plastic Thickness	0.4 mm
Dimensions	440x85x245* mm
Power	550 W
Weight	3.50 kg

▶ Sterilized Bag Sealing Machine with roller holder


1| Equipment designed to ensure a secure and airtight seal for bags and thermoplastic materials. Its robust structure and advanced features guarantee a perfect seal, protecting the contents from leaks or contamination. Equipped with an integrated roll holder, it simplifies material handling, optimizes the sealing process, and ensures consistent results with every use.

2| Features:

- Made of ABS combined with metal, with 4 rubber feet on the base.
- Easy to use, with press-to-seal functionality and manual cutting.
- Startup indicator light.
- Preheating indicator light.

Code	ZZC003
Sealing Width	15 mm
Maximum Sealing Length	300 mm
Maximum Plastic Thickness	0.4 mm
Dimensions	370x310x180 mm
Power	300 W
Weight	4.50 kg



NEW PRODUCTS



Benchtop Autoclaves



- 1 | Class B, with printer and USB output.
- 2 | LCD display.

Code	Model	Capacity	Dim. (LxWxH)
ZCK016	AXL8L	8 L	535x365x320 mm
ZCK017	AXL12L	12 L	535x365x320 mm
ZCK018	AXL18L	18 L	610x500x430 mm
ZCK019	AXL22L	22 L	650x500x430 mm



Vertical Autoclave



- 1 | 7" color LCD touchscreen with an intuitive interface and operation compatible with gloved hands.
- 1 | Customizable programs and cycle storage, adaptable to a wide range of sterilization processes.
- 1 | Automatic saturated steam control, ensuring effective and uniform sterilization.
- 1 | Complete process traceability, with memory for up to 999 cycles, USB data export, and graphical analysis of sterilization records.
- 1 | Advanced user management, featuring five access levels with configurable permissions.
- 1 | Advanced functions, including a biological waste program, adjustable steam exhaust control, agar melting and chamber preheating functions, and automatic start scheduling up to 15 days in advance.

Code	Model	Capacity	Dim. (LxWxH)
ZCK009	TS60	60 L	582x735x1060 mm
ZCK010	TS85	85 L	582x735x1060 mm
ZCK011	TS110	110 L	582x735x1260 mm

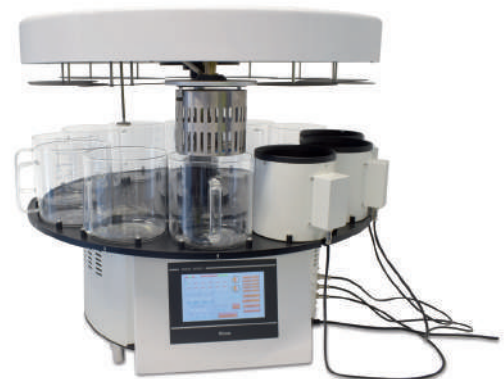


Tissue Processor



- 1 | The entire process is controlled by a microcomputer, ensuring reliable and stable operation.
- 2 | The tissue basket is equipped with agitation and vacuum functions in the reagent stations. Programmable immersion time for each station.
- 3 | Vacuum can be applied or omitted in the reagent stations, depending on requirements. High-precision temperature control in the paraffin reservoirs.
- 4 | Ten selectable programs. The unit can be configured to start automatic operation on a specified date and time.
- 5 | Backup battery ensures operation for approximately 20 minutes in the event of a sudden power failure (excluding 220V functions: paraffin reservoir heating, lifting, rotation, and lowering).

Code	ZFP016
Basket agitation	Duration: ~1 min. Frequency: >10 times/hour
Temperature range (paraffin)	30°C to 85°C
Immersion time per station	Min.: 0 minutes Max.: 2000 minutes
Maximum vacuum pressure	~0,5 bar
Metal basket	Size: Ø120 × 100 mm Capacity: up to 100 cassettes
Electrical data	Voltage: 220 VAC Frequency: 50/60 Hz Power: 300 W
Equipment dimensions (mm)	Ø760 × 580–700 (adjustable height)
Weight	~70 kg




NEW PRODUCTS

▶ Analog Homogenizer H-1


- 1 | Corded model, supplied with stand.
- 2 | Ultra-fine homogenizing head designed to achieve high linear speed thanks to its powerful motor.

Code	ZHB005
Type	Corded model
Speed range	5000-35000 rpm
Speed adjustment	Stepless, 6 speed levels
Total capacity	0.5-250 mL
Included shaft	Ø10 mm (for volumes of 5–250 mL)*
Shaft material	316 stainless steel
Continuous operating time	≤ 10 min
Power supply	220 V AC - 50 Hz
Power consumption	160 W
Dimensions	Ø 50 x 350 mm
Weight	850 g

* Please inquire about other available shaft options.

▶ Analog Homogenizer H-2


- 1 | Metal base with non-slip mat and support rods included.
- 2 | Accessory included: Ø18 mm shaft suitable for volumes of 150–3,000 mL.
- 3 | Brushless motor.

Code	ZHB006
Type	Corded model
Speed range	8000-30000 rpm
Speed adjustment	Stepless, 6 speed levels
Total capacity	150-10.000 mL
Included shaft	Ø18 mm (for volumes of 150–3,000 mL)
Shaft material	316 stainless steel
Continuous operating time	≤ 10 min
Power supply	220 V AC - 50 Hz
Power consumption	1300 W
Dimensions	350x250x650 mm
Weight	10,40 Kg

Accessories Compatible with the Homogenizer

Manufactured from 316 stainless steel. Accessories are not included with the homogenizer, except for the ZHD020 model.

Code	Shaft Dimensions	Suitable Capacity Range	Speed Range	Recommended Viscosity
ZHD020*	Ø18x225 mm	150-3.000 mL	10.000-30.000 rpm	5.000 mPas
ZHD021	Ø25x225 mm	250-5.000 mL	9.000-28.000 rpm	8.000 mPas
ZHD022	Ø36x225 mm	500-10.000 mL	8.000-25.000 rpm	10.000 mPas



NEW PRODUCTS



► Veterinary Ultrasonic Scalpel, AXV250

axavet
soluciones veterinarias

- 1 | Reusable multifunctional forceps: enables grasping, cutting, and coagulation in a single motion.
- 2 | Length options: Available with 14 cm, 23 cm, and 36 cm shafts to accommodate both open and laparoscopic procedures.
- 3 | 360° shaft rotation: enhances flexibility and maneuverability during surgery.
- 4 | Ultrasonic precision: 55.5 kHz longitudinal vibration enables high-frequency motion for protein denaturation and vessel sealing.
- 5 | Intelligent tissue feedback: automatically adjusts output power according to tissue resistance.
- 6 | Low thermal spread: controlled heat range between 60 and 100°C for safe coagulation.

Code	ZMC033
Power input	CA 100–240 V, 50/60 Hz
Rated power	Máx. 180 W
Operating frequency	55,5 kHz ± 5%
Amplitude range	40–80 microns
Control interface	7" touchscreen
Operating modes	Seal/Cut MIN/MAX/ADV
Dimensions	280 × 150 × 260 mm
Net weight	4.8 kg

