

# J

## HEATING - COOLING

<b>JB - Ovens</b> .....	<b>214</b>	<b>JG - Heating mantles</b> .....	<b>230</b>
JBB - Incubators .....	214	JGD - Mantles without stirring.....	230
JBD - Drying ovens.....	215	JGB - Mantles with stirring .....	230
JBJ - Refrigerated incubators .....	219	JGJ - Hot plates .....	231
JBN - Vacuum ovens.....	220	<b>JJ - Freezing-refrigeration</b> .....	<b>233</b>
JBP - Muffle furnaces.....	220	JJB - Refrigerated cabinets .....	233
<b>JD - Baths</b> .....	<b>221</b>	JJD - Refrigerated cabinets accessories .....	233
JDB - Water/Oil baths, analogical .....	221	JJG - Freezers .....	234
JDD - Water-oil baths digital .....	222	<b>JZ - others</b> .....	<b>234</b>
JDG - Water/Oil baths, accessories .....	224	JZB - Heating elements .....	234
JDN - Immersion thermostats .....	225		
JDQ - Immersion thermostats, accessories.....	225		
JDS - Thermoblocks.....	226		





▶ JBB - Incubators

▶ Incubator series 636 Plus



- 1 | Made of painted and oven-dried steel, epoxy coated metal exterior cabinet and stainless steel interior.
- 2 | Door with double glass window for external control without temperature variations in the inner chamber.
- 3 | Air circulation system by natural convection.
- 4 | Supplied with two height-adjustable grille trays.

Code	JBB005	JBB001	JBB002	JBB003	JBB004
Capacity	18 L	30 L	45 L	65 L	125 L
Temperature range	RT+5 at 80°C				
Resolution	1 °C (configurable to 0.1°C)*.				
Temperature fluctuation	± 1.0 °C				
Homogeneity	2%				
Power	0.3 Kw	0.3 Kw	0.3 Kw	0.4 Kw	0.5 Kw
Dimensions (cm)					
external	44x38x55	46x51x69	50x55x73	55x55x84	64x68x91
internal	26x26x26	31x31x31	35x35x35	40x36x45	50x45x55
Weight	20 Kg	39 Kg	42 Kg	53 Kg	58 Kg

\* consult

▶ High precision incubators, 642



- 1 | Inner chamber and shelves are made of mirror-like stainless steel, suitable for cleaning and disinfection. The outside of the incubator is coated with Akzo powder which gives it a better appearance and high resistance to corrosion..
- 2 | Has special design heating method, high precision temperature uniformity even without fan inside and can also prevent the culture solution from being blown dry..

Code	JBB006	JBB007	JBB008
Capacity	43 L	63 L	124 L
Load capacity per tray	15 kg		
Temperature range	RT +5 ~ 65°C		
Temp. resolution	0.1°C		
Temp. fluctuation	± 0.5°C		
Temp. uniformity	± 1.0°C		
Power	0.25 kw	0.25 kw	0.5 kw
Timer	0 ~ 9999 minutes		
Internal dim. (LxHxW cm)	35x35x35	40x35x45	50x45x55
External dim. (LxHxW cm)	50x47.5x61.5	55x47.4x71.5	65x57.5x81.5
Weight	29/32 kg	33/38 kg	49/53 kg

▶ Incubat



- 1 | Natural convection.
- 2 | Temperature thermostat control with digital thermometer.
- 3 | Adjustable temperatures from ambient +5 °C up to 80 °C.
- 4 | Stability: ±0.1 °C, up to 37 °C. homogeneity: ±0.5 °C, up to 37 °C
- 5 | Internal glass door.

Code	JBB565	JBB566	JBB567	JBB568	JBB569
Capacity	19L	36L	52L	80L	150L
Dimensions (cm)					
external	51x57x49	60x62x54	53x79x57	70x72x74	70x92x74
internal	30x25x25	40x30x30	33x47x33	50x40x40	50x60x50
Positions	5	7	5	8	8
Power	165 W	245 W	275 W	325W	545W
Weight	26 Kg	36 Kg	46 Kg	54 Kg	78 Kg



JBB - Incubators

Incudigit-TFT



- 1| Natural convection. Digital control and display of temperature and time.
- 2| Adjustable temperature from ambient +5 °C up to 80 °C.
- 3| Stability: ±0.1 °C, up to 37 °C. Homogeneity: ±0.5 °C, up to 37 °C. Set error: ±2% of the working temperature, resolution 0.1 °C
- 4| Internal tempered glass door.



<b>Code</b>	JBB560	JBB561	JBB562	JBB563	JBB564
<b>Capacity</b>	19 L	36 L	52 L	80L	150L
<b>Dimensions (cm)</b>					
<b>external</b>	51x57x49	60x62x54	53x79x57	70x72x64	70x92x74
<b>internal</b>	30x25x25	40x30x30	33x47x33	50x40x40	50x60x50
<b>Positions</b>	5	5	5	8	8
<b>Power</b>	170 W	225 W	275 W	300W	525W
<b>Weight</b>	26 Kg	36 Kg	46 Kg	54 Kg	75 Kg

Incubator CO2



- 1| External case of steel coated with epoxy with insulated chamber.
- 2| Two doors; one interior of tempered glass with silicon gasket and a heated external steel door with magnetic seal to prevent condensation on the glass door.
- 3| Smooth door action, to prevent jolts or vibrations.
- 4| 4 Adjustable temperature from ambient +5°C to 50°C.



<b>Code</b>	JBB545
<b>Capacity</b>	150 L
<b>Shelves positions</b>	9
<b>Power</b>	1100 W
<b>Dimensions (cm)</b>	
<b>external</b>	95x65x73
<b>internal</b>	65x50x46
<b>Weight</b>	110 Kg

JBD - Drying ovens

Drying oven, series 631 PLUS



- 1| Epoxy coated metal exterior cabinet and stainless steel interior. Adjustable legs to facilitate the installation and leveling of the stove.
- 2| Door with 180° opening window with double thermal safety glass for external control, without temperature variations in the interior chamber.
- 3| Air circulation system by natural convection (by changing densities).
- 4| Supplied with two height-adjustable grid trays.
- 5| Two heating speeds that can be selected with a button (except in ref.JBD009).



<b>Code</b>	JBD009	JBD001	JBD002	JBD003	JBD004
<b>Capacity</b>	18 L	30 L	45 L	65 L	125 L
<b>Temperature range</b>	80°C a 250 °C				
<b>Resolution</b>	1 °C (configurable at 0.1°C)*				
<b>Fluctuation temperature</b>	± 1.0 °C				
<b>Homogeneity</b>	2%				
<b>Power</b>	0.6 Kw	0.8 Kw	1.0 Kw	1.5 Kw	2.3 Kw
<b>Approx. dimensions (cm)</b>					
<b>external</b>	44x38x55	46x51x69	50x55x73	55x55x84	64x68x91
<b>internal</b>	26x26x26	31x31x31	35x35x35	40x36x45	50x45x55
<b>Weight</b>	20 Kg	39 Kg	42 Kg	53 Kg	58 Kg

\* consult



▶ JBD - Drying ovens

▶ Forced air ovens, series 632 PLUS



- 1 | Forced air circulation by means of a fan.
- 2 | Fan on/off switch.

Code	JBD005	JBD006	JBD007	JBD008	JBD010
Capacity	30 L	45 L	65 L	125 L	230 L
Temperature range	80 - 250°C				RT+10 - 300°C
Resolution	1°C (configurable at 0.1°C)*				0.1 °C
Fluctuation temperature	±1,0°C				
Homogeneity	2%				±2,5%
Power	0.8 Kw	1.0 Kw	1.5Kw	2.3Kw	3.0 Kw
Approx. dimensions cm					
external	46x51x69	50x55x73	55x55x84	64x68x91	74x70x127
internal	31x31x31	35x35x35	40x36x45	50x45x55	60x50x75
Weight	39 Kg	42 Kg	53 Kg	58 Kg	84 Kg

\* consult



Code	Description
JBG014	Tray and fastening guides 47x42 cm for ovens 30 L (new type)
JBG015	Tray and fastening guides 47x42 cm for ovens 45 L (new type)
JBG016	Tray and fastening guides 47x42 cm for ovens 65 L (new type)
JBG017	Tray and fastening guides 47x42 cm for ovens 125 L (new type)
JBG018	Tray and fastening guides 47x42 cm for ovens 230 L (new type)
JBG019	Tray and fastening guides 47x42 cm for ovens 43 L, model 642
JBG020	Tray and fastening guides 47x42 cm for ovens 63 L, model 642
JBG021	Tray and fastening guides 47x42 cm for ovens 124 L, model 642

▶ "Conterm"



- 1 | Natural convection. Temperature thermostat control with digital thermometer.
- 2 | For adjustable temperatures from 40 °c up to 250 °c.
- 3 | Stability: ±0.5 °C up to 150 °c. Homogeneity: ±1.5 °C up to 150 °c.

Code	JBD540	JBD541	JBD543*	JBD544
Capacity	19L	36L	52L	80L
Dimensions (cm)				
external	50x60x44	60x65x49	53x82x52	70x74x59
internal	30x25x25	40x30x30	33x47x33	50x40x40
Shelves	5	7	5	8
Power	580 W	870 W	980 W	1150 W
Weight	27 Kg	35 Kg	44 Kg	54 Kg

\* Type Poupinel



▶ JBD - Drying ovens

▶ “Digitheat-TFT”



- 1| Natural convection. Microprocessor control with tft touch screen.
- 2| Adjustable temperature from ambient +5 °c up to 250 °c.
- 3| Stability: ±0.3 °c, up to 150 °c. homogeneity: ±1 °c, up to 150 °c.
- 4| Set error: ±2 % of the working temperature. resolution: 1 °c.

Code	JBD546	JBD547	JBD548*	JBD549	JBD550*
Capacity	19 L	36 L	52 L	80 L	150 L
Shelves positions	5	7	5	8	8
Power	600 W	900 W	1000 W	1200 W	2100 W
<b>Dimensions (cm)</b>					
external	50x60x44	60x65x49	53x82x52	70x74x59	70x95x68
internal	30x25x25	40x30x30	33x47x33	50x40x40	50x60x50
Weight	24 Kg	35 Kg	44 Kg	59 Kg	73 Kg

\* model poupinel



▶ JBB - Incubators

▶ “Digitronic TFT”



- 1| TFT touch screen. Inner chamber made of AISI 304 stainless steel.
- 2| Pre-mixing chamber made of AISI 304 stainless steel.
- 3| Homogeneously distributed shielded heating elements with complete air circulation throughout. Low external temperature due to excellent thermal insulation.
- 4| Flexible silicon door gasket around the entrance of the chamber.
- 5| Excellent door seal due to the floating inner door that adjusts and absorbs the thermal expansion. Turbo fan made of AISI 304 stainless steel that makes to circulate the air at the working temperature.
- 6| Diagram showing the air flow from the pre-mixing chamber around the heating elements prior to entry to the oven's chamber.
- 7| Independent insulated control box. Epoxy coated outer case.
- 8| Adjustable temperature from ambient +5°C to 250°C

Code	JBB537	JBB538	JBB539
Capacity	33 L	47 L	47 L
Door type	Glass	Metal	Glass
Heating rate (100°C)	15 min	16 min	16 min
Recovery time	7 min	7 min	7 min
Comp.air exchange	16/hr	16/hr	16/hr
Shelves positions	7	5	5
Power	1200W	1200W	1200W
<b>Dimensions (cm)</b>			
external	60x65x55	53x81x58	53x81x58
internal	40x28x30	33x45x32	33x45x32
Weight	40 Kg	46 Kg	50 Kg



Model Digitronic type Poupinel  
CODE: JBB539 and JBB543



Model Digitronic with solid metal door.  
CODE: JBB540

(With toughened glass window door  
CODE: JBB537 and JBB541)

Code	JBB540	JBB541	JBB542	JBB543
Capacity	76 L	76 L	145 L	145 L
Door type	Metal	Glass	Metal	Glass
Heating rate (100°C)	17 min	17 min	17 min	17 min
Recovery time	9 min	9 min	10 min	10 min
Comp.air exchange	14/hr	14/hr	12/hr	12/hr
Shelves positions	8	8	9	9
Power	1600W	1600W	2000W	2000W
<b>Dimensions (cm)</b>				
external	70x75x65	70x75x65	70x95x72	70x95x72
internal	50x38x40	50x38x40	50x58x50	50x58x50
Weight	58 Kg	64 Kg	74 Kg	79 Kg



Model Digitronic type Poupinel, door with toughened double glass window  
CODE: JBB538 and JBB542



JBD - Drying ovens

▶ Digital oven DRYBIG



- 1 | Rapid temperature attainment and recovery in minimal time.
- 2 | With forced air circulation.
- 3 | Digital regulation and display of temperature and time.
- 4 | Adjustable temperatures from 40°C to 250°C. Stability  $\pm 0.4^\circ\text{C}$  at 100°C. Homogeneity  $\pm 2^\circ\text{C}$  at 100°C. Setpoint error  $\pm 2.5\%$  at working temperature. Resolution: 1°C.

<b>Code</b>	JBD530	JBD532
<b>Capacity</b>	216 L	288 L
<b>Setpoint time 100%/min</b>	16	18
<b>Recovery time min</b>	10	10
<b>Air renewal per hour</b>	12	11
<b>Dimensions (height x width x depth) (cm)</b>		
<b>internal</b>	60x60x60	80x60x60
<b>external</b>	87x112x84	107x112x84
<b>Power</b>	4000 W	5000 W
<b>Shelves</b>	6	8
<b>Weight</b>	150 Kg	161 Kg



<b>Code</b>	JBD534	JBD535
<b>Volume</b>	400 L	720 L
<b>Setpoint time 100%/min</b>	18	19
<b>Recovery time min</b>	13	13
<b>Air renewal per hour</b>	6	6
<b>Dimensions (height x width x depth) (cm)</b>		
<b>internal</b>	100x80x50	120x100x60
<b>external</b>	128x132x74	150x152x80
<b>Power</b>	5250 W	6000 W
<b>Shelves</b>	10	12
<b>Weight</b>	200 Kg	264 Kg

▶ Drying oven for glassware "Dryglass"



- 1 | Hydraulic thermostat for temperature control. Air circulation by turbo fan. Inner chamber made of AISI 304 stainless steel with shelf runners. Removable tempered glass sliding doors. Ventilation port for steam. Epoxy coated external case.
- 2 | Supplied with 2 shelves and 4 shelf guides.
- 3 | Dual heating power selector switch. Mains indicator lamp. Hydraulic thermostat for temperature control. Locking system of thermostat knob. Heater "ON" operation indicator lamp. Analogue thermometer. Adjustable over temperature safety thermostat, that cuts off the power if the control thermostat fails, manual reset with "on" indicator lamp.
- 4 | Adjustable temperature from 40°C to 170°C.

<b>Code</b>	JBD512
<b>Capacity</b>	126 L
<b>Shelves positions</b>	8
<b>Power</b>	3000 W
<b>Dimensions (cm)</b>	
<b>external</b>	66x94x54
<b>internal</b>	45x70x40
<b>Weight</b>	65 Kg



## JBD - Drying ovens

### ► Poupinel dry heat sterilizer "Dryterm"



1| Heating by shielded elements in the base that provides a rapid rise in temperature. Flap door. Inner chamber made of AISI 304 stainless steel, complete with a heater cover, three shelf runners and two perforated shelves 10 mm high. Epoxy-coated outer casing.

2| Hydraulic thermostat temperature control. Locking device for thermostat knob. Timer 0 to 120 min. with automatic switch off. Heater "ON" indicator. Analogue temperature reading thermometer.

<b>Code</b>	JBD513
<b>Capacity</b>	19 L
<b>Temperature range</b>	From 60 °C up to 250 °C
<b>Power</b>	770 W
<b>Dimensions (cm)</b>	
<b>external</b>	37x54x34
<b>internal</b>	25x32x23
<b>Weight</b>	19 Kg



### ► Poupinel dry heat sterilizer "Drytime II"



1| Heating by shielded elements in the base which provide a rapid temperature rise.

2| Flap door.

3| Inner chamber in AISI 304 stainless steel.

4| Removable tank with extraction clamps.

5| Adjustable temperature from 50°C to 220°C.

<b>Code</b>	JBD518
<b>Capacity</b>	1,5 L
<b>Dimensions (cm)</b>	
<b>external</b>	15x31x20
<b>internal</b>	6,5x25x12
<b>Power</b>	300 W
<b>Weight</b>	4 Kg



## JBJ - Refrigerated incubators

### ► Biochemical refrigerated incubator



1| The shell is made of cold rolled steel plate, and the working chamber and shelves are made of mirror stainless steel, convenient for cleaning and disinfection.

2| Control panel with color LCD screen and 4 buttons. With over-temperature alarm, and additional independent digital limiter to ensure temperature accuracy.

3| Parameters

- High quality compressor to ensure long running time
- The dual evaporator switch works to prevent the formation of ice sheets or frost.
- The special design of the conduit guarantees the uniformity of the temperature.

4| Includes two height adjustable shelves. Up to 10 different heights to choose from.

<b>Code</b>	JB004	JB005
<b>Capacity</b>	70 L	150 L
<b>Temperature range</b>	0-65 °C	
<b>Resolution</b>	0,1 °C	
<b>Temperature fluctuation</b>	±0,5°C	
<b>Temperature accuracy</b>	±1°C (to 37 °C)	
<b>Power</b>	600 W	800 W
<b>Dimensions</b>		
<b>external</b>	58x67x1210 cm	68x72x1410 cm
<b>internal</b>	42x35.5x55 cm	50x40.5x75 cm
<b>Weight</b>	85 Kg	120 Kg





▶ JBJ - Refrigerated incubators

▶ Refrigerated cabinets "Medilow-S"



- 1 | With forced air fan circulation. With digital electronic temperature control.
- 2 | Temperature range controllable from +2 °C to +40 °C. With a stability of ±1.5 °C.
- 3 | Resolution 1 °C.

<b>Code</b>	JB501
<b>Capacity</b>	180 L
<b>Dimensions (cm)</b>	
<b>external</b>	85x60x85
<b>internal</b>	70x51x44
<b>Shelves</b>	3
<b>Internal power points</b>	2
<b>Power</b>	250 W
<b>Weight</b>	36 Kg

CODE: JBB562\*

▶ JBN - Vacuum ovens

▶ Vacuum ovens



- 1 | Natural convection stoves feature an interior chamber constructed from stainless steel and an LCD screen.
- 2 | The JBN001 model comes with one tray, while the JBN002 model comes with two trays.

<b>Code</b>	JBN001	JBN002
<b>Capacity</b>	25 L	53 L
<b>Temperature range</b>	RT to 250 °C	
<b>Resolution</b>	0,1 °C	
<b>Temperature fluctuation</b>	± 1.0 °C	
<b>Maximum vacuum</b>	<= 133 Pa (1.33 mbar)	
<b>Vacuum gauge range</b>	From 0 to -0,1 MPa (from 0 to -15 psi)	
<b>Dimensions (cm)</b>		
<b>internal</b>	30x30x27,5 cm	41,5x37x34,5 cm
<b>external</b>	58x45x45 cm	72x52,5x53,5 cm
<b>Power</b>	220 V / 50 Hz	

▶ JBP - Muffle furnaces

▶ Serie 642



- 1 | Outer metal housing with epoxy paint protective. Inner built with low density refractory bricks and isolating fibers that provides great temperature uniformity.
- 2 | Drop down door that allow loading and removal of the materials easily (except 642/16).
- 3 | Digital automatic pyrometer regulation, microprocessor, alarm, PID parameters and non-volatile memory.
- 4 | Accessories: regulation ramps: 1 program of 8 steps or 4 programs of 16 steps; smoke extractor chimney, forced smoke extractor chimney.

<b>Code</b>	JBP001	JBP002	JBP003	JBP004	JBP005
<b>Model</b>	642/3	642/6	642/8	642/12	642/16
<b>Capacity</b>	3.6 L	6 L	7.6 L	12 L	18 L
<b>Maximum temperature</b>	1200°C				
<b>T°max limited working</b>	1100°C				
<b>Potency (W)</b>	1200W	2000W	3800W	3800W	4500W
<b>Thermocouple</b>	K Type				
<b>Control</b>	Digital				
<b>Heater</b>	Thread Kanthal AF				
<b>Heating place</b>	2	3	3	2	3
<b>Door</b>	Down	Down	Down	Down	Side
<b>Controller</b>	Bottom	Bottom	Bottom	Bottom	Side
<b>Dimensions</b>					
<b>interior (AxAnxF)</b>	12x15x20 cm	15x20x20 cm	16x20x24 cm	20x25x28 cm	23x26x30 cm
<b>exterior (AxAnxF)</b>	45x35x43 cm	40x50x45 cm	50x55x55 cm	49x44x50 cm	60x70x60 cm
<b>Voltage (V)</b>	220V				
<b>Weight (kg)</b>	30 Kg	45 Kg	45 Kg	45 Kg	60 Kg



▶ JDB - Water/Oil baths, analogical

▶ Water and oil baths “Termobat”



- 1 | Adjustable temperature from ambient+5 °c to 110 °c. Stability ±2 °c to 200 °c. Stability ±3 °c.
- 2 | Tank interior made of AISI 304 stainless steel,with an epoxy coated base.



<b>Code</b>	JDB503	JDB504
<b>Maximum temp</b>	110 °C	200 °C
<b>Capacity</b>	11 L	11 L
<b>Ø (usable) xHeight</b>	29x17 cm	29x17 cm
<b>Ø (exterior) xHeight</b>	29x25 cm	29x25 cm
<b>Power</b>	2100 W	2100 W
<b>Weight</b>	5,5 Kg	5,5 Kg

Compatible accessories Termobat - NOT included with the equipment



Perforated shelf  
Code JDG512



Reducing discs  
Code JDG525

Code	Description
JDG512	Perforated s.s.shelf
JDG525	Reducing discs

▶ Water and oil baths “Univeba”



- 1 | Water bath: adjustable temperature from ambient +5 °C to 110 °C stability ±2 °C.
- 2 | Oil bath: adjustable temperature from ambient +5 °C to 200 °C stability ±3 °C.

<b>Code</b>	JDB501	JDB502
<b>Maximum temp</b>	110 °C	200 °C
<b>Capacity</b>	2,5 L	2,5 L
<b>ØxHeight</b>	18x13 cm	18x13 cm
<b>Exterior dimensions</b>	19x22x27 cm	19x22x27 cm
<b>Power</b>	390 W	640 W
<b>Weight</b>	4 Kg	4 Kg



▶ Water and oil baths “Precisterm”



- 1 | Double skinned tank of AISI 304 stainless steel with an exterior case of AISI 304 stainless steel.
- 2 | Heating elements embedded in INCOLOY heat and corrosion resistant stainless steel.

<b>Code</b>	JDB506	JDB507	JDB508	JDB509	JDB510
<b>Max. temp.</b>	110 °C	110 °C	110 °C	110 °C	110 °C
<b>Capacity</b>	2 L	5L	12L	20 L	45 L
<b>Dimensions</b>					
<b>Usable</b>	15x15x13	15x30x14	15x30x30	15x48x30	15x62x50
<b>Exterior</b>	20x20x27	20x37x27	20x40x42	20x58x42	22x69x62
<b>Power</b>	390 W	600 W	1110 W	1500 W	2400 W
<b>Weight</b>	3,5 Kg	6 Kg	8 Kg	10 Kg	18 Kg





▶ JDB - Water/Oil baths, analogical

▶ Water and oil baths "Precistern"



- 1 | Double-walled reservoir made of AISI 304 stainless steel with an outer casing in AISI 304 stainless steel.
- 2 | Integrated heating elements made of heat- and corrosion-resistant stainless steel of the INCOLOY type.

<b>Code</b>	JDB511	JDB512	JDB513	JDB514	JDB515
<b>Max. temp.</b>	200 °C	200 °C	200 °C	200 °C	200 °C
<b>Capacity</b>	2 L	5L	12L	20 L	45 L
<b>Dimensions</b>					
<b>Usable</b>	15x15x13	15x30x14	15x30x30	15x48x30	15x62x50
<b>Exterior</b>	20x20x27	20x37x27	20x40x42	20x58x42	22x69x62
<b>Power</b>	640 W	1110 W	1400 W	2100 W	3800 W
<b>Weight</b>	3,5 Kg	6 Kg	8 Kg	10 Kg	18 Kg

▶ Water and oil baths "Precisdig"



- 1 | Double skinned tank of AISI 304 stainless steel with an exterior case of AISI 304 stainless steel.
- 2 | Heating elements embedded in INCOLOY heat and corrosion resistant stainless steel.

<b>Code</b>	JDD531	JDD532	JDD533	JDD534
<b>Max. temp.</b>	99,9 °C	99,9 °C	99,9 °C	99,9 °C
<b>Capacity</b>	5 L	12 L	20 L	45 L
<b>Dimensions</b>				
<b>Usable</b>	15x30x14cm	15x30x30cm	15x48x30cm	15x62x50cm
<b>Exterior</b>	20x37x27cm	20x40x42cm	20x58x42cm	20x69x62cm
<b>Power</b>	600 W	1100 W	1500 W	2400 W
<b>Weight</b>	6 Kg	8 Kg	10 Kg	18 Kg

<b>Code</b>	JDD535	JDD536	JDD537
<b>Max. temp.</b>	99,9 °C	99,9 °C	99,9 °C
<b>Capacity</b>	12 L	20 L	45 L
<b>Dimensions</b>			
<b>Usable</b>	15x30x30cm	15x48x30cm	15x62x50cm
<b>Exterior</b>	40x40x42cm	40x58x42cm	40x69x62cm
<b>Power</b>	1100 W	1500 W	2400 W
<b>Weight</b>	8 Kg	10 Kg	18 Kg

▶ Sand baths "Combiplac-Sand"



- 1 | Electronic energy heater controller.
- 2 | The steel hotplate surface has an evenly distributed heater element providing homogeneous heat distribution.

<b>Code</b>	JDB516	JDB517
<b>Dimensions</b>		
<b>Usable</b>	5x18x38 cm	5x30x30 cm
<b>Exterior</b>	18x22x41 cm	21x32x35 cm
<b>Power</b>	2300 W	2800 W
<b>Weight</b>	13 Kg	15 Kg



## ▶ JDD - Water-oil baths digital

### ▶ Digital water bath



- 1 | New design of stainless steel inner tank made in a single piece free of welds, coupled to an outer metal cabinet with epoxy coating.
- 2 | Acoustic signal at the end of the selected time, in continuous mode or in scheduled periods. Acoustic signal indicating bath overheating ( $>5^{\circ}\text{C}$  above the selected temperature).
- 4 | Electric drainage pump with drainage outlet (except model 601/3).
- 5 | Removable lid with holes and reducing rings. Support tray covering the heating element.

Code	JDD001	JDD002	JDD003	JDD004
Model	601/3	601/5	601/12	601/19
Capacity	3 L	5 L	12 L	19 L
Temperature range	RT+5-100°C			
Resolution	0.1 °C			
Timer	1 - 9999 min			
Holes	1	2	4	6
Dimensions (mm)	160x160x130	300x150x150	320x300x150	500x300x150
Weight	3 kg	4 kg	6 kg	8 kg



### ▶ Digital oil bath



- 1 | Stainless steel tank in a single piece free of welds, coupled to an exterior metal cabinet with epoxy coating.
- 2 | Acoustic signal at the end of the selected time, in continuous mode or in scheduled periods. Acoustic signal indicating bath overheating ( $>5^{\circ}\text{C}$  above the selected temperature). Removable lid with holes and reducing rings. Support tray covering the heating element.

Code	JDD005	JDD006
Model	602/3	602/5
Capacity	2,5 L	5 L
Temperature range	RT+5-200°C	
Resolution	0,1°C	0,1°C
Timer	1 - 9999 min	1 - 9999 min
Holes	1	2
Dimensions*	145x130x100 mm	295x145x100 mm
Weight	4 kg	7 kg

\* approx. useful dimensions



### ▶ Bath circulators "Digiterm-S-150"



- 1 | Cuvettes set of 20 and 27 l. capacity, with thermostatic equipment included. For temperatures from amb+5 to 150 °c. Stability:  $\pm 0,1^{\circ}\text{C}$ . resolution: 0.1 °c.

Code	JDD513	JDD514
Temp range	150 °C	150 °C
Capacity	20 L	27 L
Dimensions		
Interior	15x30x29 cm	20x30x29 cm
Exterior	36x55x35 cm	41x55x35 cm
Pump		
Pressure	150 mbar	150 mbar
Pump rate	12 l/min	12 l/min
Power	2000 W	2000 W
Weight	9,2 Kg	10,8 Kg





JDD - Water-oil baths digital

▶ Bath circulators "Digiterm-TFT-200"



- 1 | With immersion thermostat digiterm-tft-200.
- 2 | Cuvettes set of 20 and 27 l. From ambient +5 °C to 200 °C. stability ±0.1 °C. set error ±2 °C. resolution 0.1 °C.

<b>Code</b>	JDD515	JDD516
<b>Temp range</b>	200 °C	200 °C
<b>Capacity</b>	20 L	27 L
<b>Dimensions Interior</b>	15x30x29 cm	20x30x29 cm
<b>Dimensions Exterior</b>	36x55x35 cm	41x55x35 cm
<b>Pump</b>		
<b>Pressure</b>	150 mbar	150 mbar
<b>Pump rate</b>	12 l/min	12 l/min
<b>Power</b>	2060 W	2060 W
<b>Weight</b>	10 Kg	12 Kg

Compatible accessories Digiterm - Not included with the equipment

Code	Description
JDL501	Support-frame thermostat baths
JDL502	Constant level for cuvettes 20 cm
JDN504	Thermostat inmers. Digiterm S-150
JDN505	Thermostat inmers. digiterm TFT-200

▶ Viscometer Precision Bath "VB-1423"



- 1 | For controllable temperatures from amb. +5 °C to 100 °C. stability ±0.1 °C. homogeneity ±0.1 °C. reading error ±0.09 °C. resolution 0.1 °C.
- 2 | Temperature sensor PT100 thermo-resistor, stainless steel AISI 304 lid with three viscometer locations ports, three independent lids and an additional location port for the control thermometer.

<b>Code</b>	JDD522
<b>Control range</b>	amb. +5°C up to 100 °C
<b>Capacity</b>	20 L
<b>Height / Ø</b>	
<b>Tank</b>	32x30 cm
<b>Total</b>	47x30 cm
<b>Power</b>	1000 W
<b>Weight</b>	8 Kg



JDG - Water/Oil baths, accessories

▶ Refrigeration units FRIGEDOR and FRIGEDOR-REG



- 1 | Device designed to cool liquids in thermostatic baths when a temperature lower than ambient is needed. For temperatures -20°C to +20°C. Epoxy-coated outer casing.
- 2 | Equipped with a hermetic compressor, ventilated condenser, and refrigeration coil made of stainless steel AISI 304. Cord length: 900 mm. Coil Ø: 45 mm. Coil length: 150 mm.
- 3 | FRIGEDOR model: Without temperature regulator. Continuous compressor operation. Main switch with indicator light.
- 4 | FRIGEDOR-REG model: Equipped with an electronic temperature controller with digital display. Includes Pt 100 sensor. Resolution: 1 digit. Main switch with indicator light. Digital electronic temperature regulator. Connection for Pt 100 sensor.

<b>Code</b>	JDG528	JDG530
<b>Temperature</b>	Fixed at 20 °C	-20 to +20 °C
<b>Stability</b>	-	± 1,5 °C
<b>External dimensions (height x width x depth)</b>	41x21x34 cm	41x21x34 cm
<b>Power consumption</b>	285 W	285 W
<b>Cooling capacity at -20°C</b>	50 W	50 W
<b>Weight</b>	14 Kg	14 Kg



## JDN - Immersion thermostats

### ▶ Frigiterm-TFT-10" and "Frigiterm-TFT-30"



- 1 | Maximum working volume to maintain maximum temperature: 8 litres.
- 2 | AISI 304 stainless steel top and lid with an inner tank of AISI 304 stainless steel.
- 3 | Complete with a pump for internal and external liquid circulation with inlet and outlet connectors.

Code	JDN507	JDN508
<b>Model</b>	Frigiterm 10	Frigiterm 30
<b>Capacity</b>	8 L	8 L
<b>Control range</b>	-10°C + 100 °C	-30 °C + 100 °C
<b>Dimensions</b>		
<b>Usable</b>	12x20x14 cm	12x20x14 cm
<b>Exterior</b>	36x66x44 cm	36x66x44 cm
<b>Pump</b>		
<b>Pressure</b>	150 mbar	150 mbar
<b>Flowrate</b>	12 l/min	12 l/min
<b>Power</b>	1150 W	1460 W
<b>Compressor power</b>	1/8 HP	3/8 HP
<b>Weight</b>	28 Kg	30 Kg



## ▶ JDQ - Immersion thermostats, accessories

### ▶ Methacrylate bath



- 1 | Can with stand temperatures up to 60 °C.

Code	Capacity	Dimensions	Thickness
JDQ501	8 L	15x18x31cm	6 mm
JDQ502	13 L	15x23x40cm	8 mm
JDQ503	30 L	20x30x50cm	8 mm
JDQ505	9,5 L	14,5x16,5x39	6 mm



### ▶ Stainless steel baths.



- 1 | Double skinned with an AISI 304 stainless steel exterior and internal bath of AISI 304 stainless steel.

Code	Capacity	Dim. usable	Dim exterior	Weight
JDQ506	9 L	15x29x22cm	20x34x28cm	3,5 Kg
JDQ507	12 L	15x30x31cm	20x37x35cm	4,3 Kg
JDQ508	20 L	15x48x30cm	20x55x35cm	6,6 Kg
JDQ509	27 L	20x48x30cm	25x55x35cm	7,6 Kg
JDQ513	45 L	15x62x50cm	23x70x56cm	11 Kg



### ▶ Stainless steel baths.



- 1 | Thermally insulated. Ideal for low temperatures. Suitable for J.P. Selecta refrigerated units.
- 2 | Similar to our other bath but with additional internal expanded foam insulation that prevents external condensation or heat loss, working temperature range from -40°C to +90°C.

Code	Capacity	Dim. usable	Dim exterior	Weight
JDQ510	9 L	15x29x22cm	24x40x34cm	6 Kg
JDQ511	20 L	15x48x30cm	24x61x41cm	9 Kg
JDQ512	27 L	20x48x30cm	29x61x41cm	11 Kg





▶ JDS - Thermoblocks

▶ Thermoblock model 705



- 1 | Manufactured with a metal base, rubber feet, and a plastic top cover. High-contrast black/white LCD screen.
- 2 | Dimensions of the block holes: 70 x Ø 16.7mm. Conical bottom.
- 3 | Easy to operate, with alarm and automatic shutdown due to overtemperature as well as rapid forced cooling.

<b>Code</b>	JDS010
<b>Capacity</b>	6x15 mL
<b>Temperature range</b>	RT+5 - 100°C
<b>Heating-up time (25° to T<sup>a</sup> max.)</b>	<15min
<b>Timer</b>	1-999 sec o 1-999 min
<b>Sensor</b>	PT100
<b>Dimensions</b>	140x115x210 mm
<b>Weight</b>	1,3 Kg

▶ Mini 'T'



- 1 | Designed in compact size. Simultaneous view of actual and programmed time and temperature on the LCD screen.
- 3 | Various aluminum blocks (not included) available to cover a wide range of tubes (from 0.2 mL to 50 mL) and other types of containers. See table below and JVD section

<b>Code</b>	JDS001
<b>Temperature range</b>	RT+5 - 80°C
<b>Temp. accuracy control</b>	0,5°C
<b>Screen resolution</b>	0,1°C
<b>Heating time (20° to T<sup>a</sup> max.)</b>	<12 min
<b>Timer</b>	0-999 seg o 0-999 min
<b>Approx. dimensions</b>	110 x 150 x 80 mm
<b>Weight</b>	0,5 Kg

Accessories - mini 'T' metal bath blocks - NOT included with the equipment



Bloc  
Code JDV001



Bloc  
Code JDV002



Bloc  
Code JDV003\_4



Bloc  
Code JDV005



Bloc  
Code JDV006



Bloc  
Code JDV007

Code	Capacity
JDV001	40 tubes of 0,2 mL
JDV002	24 tubes of 0,5 mL
JDV003	15 tubes of 1,5 mL

Code	Capacity
JDV004	15 tubes of 2 mL
JDV005	8 cells of 12,5x12,5 mm
JDV006	4 tubes of 15 mL
JDV007	2 tubes of 50 mL



## JDS - Thermoblocks

## ► Model 603/3



- 1 | Simultaneous view of actual and programmed time and temperature on the LED display.
- 2 | Various blocks (not included) available to cover a wide range of tubes (from 0.2 mL to 1.5 mL). See table below and JVD section



<b>Code</b>	JDS002
<b>Temperature range</b>	RT +5 - 100°C
<b>Temp. accuracy control</b>	±0,5°C
<b>Screen resolution</b>	0,1°C
<b>Heating time (20° to T° max.)</b>	<25 min
<b>Timer</b>	1 min – 99h 59min
<b>Approx. dimensions</b>	225 x 160 x 197 mm
<b>Weight</b>	3 Kg

## Accessories - metal bath blocks model 603/3 - NOT included with the equipment



**Bloc**  
Code JDV012



**Bloc**  
Code JDV013



**Bloc**  
Code JDV014



**Bloc**  
Code JDV015



**Bloc**  
Code JDV016

Code	Capacity
JDV012	96 tubes of 0,2 mL
JDV013	29 tubes of 0,5 mL, 32 tubes of 1,5 mL
JDV014	61 tubes of 0,5 mL
JDV015	41 tubes of 1,5 mL
JDV016	28 tubes of 12 mm Ø

## ► Model 603/10 and 603/20



- 1 | Simultaneous view of actual and programmed time and temperature on the LCD screen.
- 2 | Several blocks (not included) available to cover a wide range of tubes (from 0.2 mL to 2 mL). See table below and JVD section



Code	JDS003	JDS004
<b>Temperature range</b>	RT+5 - 100°C	-10°C - 100°C
<b>Temp accuracy</b>	± 0,5 °C	± 0,5 °C
<b>Screen resolution</b>	0,1 °C	0,1 °C
<b>Heating time (from 20°C to 100°C)</b>	<12 min	<20 min
<b>Cooling time (from 20°C to -10°C)</b>	-	<30 min
<b>Timer</b>	1 min – 99h 59min	
<b>Approx. dimensions</b>	300 x 210 x 180 mm	
<b>Weight</b>	2,5 Kg	4,6 Kg

## Accessories - metal bath blocks model 603/10 and 603/20 - NOT included with the equipment



**Bloc**  
Code JDV008 a JDV011

Code	Capacity
JDV008	96 microtubes of 0,2 mL
JDV009	54 microtubes of 0,5 mL
JDV010	35 microtubes of 1,5 mL
JDV011	35 microtubes of 2 mL



JDS - Thermoblocks

► Thermoshaker, model 603/100



- 1| Simultaneous display of time, temperature and actual and programmed speed on the LCD screen.
- 2| You can heat and shake simultaneously or operate independently
- 3| Several blocks (not included) available to cover a wide range of tubes (from 0.2 mL to 2 mL).

<b>Code</b>	JDS005
<b>Temperature range</b>	RT+5 - 100°C
<b>Temp. accuracy control</b>	±0,5°C
<b>Screen resolution</b>	0,1°C
<b>Heating time (from 20°C to 100°C)</b>	<20 min
<b>Stirring speed</b>	200-1500 rpm
<b>Shaking Orbit</b>	2 mm
<b>Timer</b>	1 min – 99h 59min
<b>Approx. dimensions</b>	354 x 240 x 170 mm
<b>Weight</b>	8,5 Kg

Accessories - metal bath blocks model 603/100 - NOT included with the equipment



Code	Capacity
JDV008	96 microtubes of 0,2 mL
JDV009	54 microtubes of 0,5 mL
JDV010	35 microtubes of 1,5 mL
JDV011	35 microtubes of 2 mL

► Block bath RS-120S



- 1| Dry heating system for metal blocks of 150x95 mm.
- 2| Two operating modes: continuous or timer (1'-99h59').
- 3| Overheating protection.
- 4| Various applications thanks to the variety of interchangeable (optional) blocks.

<b>Code</b>	JDS007
<b>Temperature range</b>	Ambient to 120 °C
<b>Temperature accuracy (at 37°) ±0.5°C</b>	±0,5 °C
<b>Heating rate (from 20°C to T max) 5.5 °C/min</b>	5.5 °C/min
<b>Over-temperature protection</b>	140 °C
<b>Timer</b>	1 min – 99h 59 min
<b>Power</b>	160 W
<b>Dimensions</b>	290x175x85 mm
<b>Weight</b>	3 Kg

Accessories - metal blocks - NOT included with the equipment



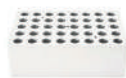
Code: JDV017  
Heating block for 54 tubes of 0,2 mL



Code: JDV018  
Block for 40 tubes of 0,5 mL



Code: JDV019  
Block for 40 tubes of 1,5 mL



Code: JDV020  
Block for 40 tubes of 2 mL



Code: JDV021  
Block for 28 tubes of 5/15 mL



Code: JDV022  
Block for 8 tubes of 50 mL



Code: JDV023  
Microplate block 96/384 positions



Code: JDV024  
Block 0.2 mL; 0.5 mL; 1.5/2 mL, 18 orifices of each volume



▶ JDS - Thermoblocks

▶ Thermoblock HC-110-Pro / HM 100-Pro / HCM100-Pro



- 1 | Compact, programmable and overheating protection for safe sample handling.
- 2 | Precise temperature control for heating and cooling -5 °C to 110 °C for all major lab applications.
- 3 | Interchangeable sample blocks available. Most common application includes reagent warming/cooling, DNA extractions, enzymatic reactions and reactions that need to be processed at or near room temperature.



Code JDS008



Code JDS009



Code JDS011

Code	JDS011	JDS008	JDS009
<b>Functions</b>	Heating, cooling and mixing	Heating and mixing	Heating and cooling
<b>Temperature range</b>	Below room temp 15° / 100 °C	RT to 100 °C	Below room temp 25° / 110 °C
<b>Temperature accuracy</b>		± 0.5 °C	
<b>Max heating speed (20 °C to T max.)</b>		5.5 °C/min	
<b>Max Cooling speed</b>			
<b>100 °C - RT</b>	-	-	2.5°C /min
<b>below room RT</b>	-	-	0.5°C/min
<b>Mixing speed</b>	200-1500 rpm	200-1500 rpm	-
<b>Mixing orbit</b>	3 mm	3 mm	-
<b>Timer</b>		0-99 h 30 min	
<b>Program</b>		9	
<b>Display</b>		TFT	
<b>Overheating protection</b>		150 °C	
<b>Power</b>	120-240V,50/60 Hz	200-240V,50/60 Hz	200-240V,50/60Hz
<b>Dimensions without block (LxAxH)</b>		235x200x120 mm	
<b>Weight</b>		7.3 kg	

Accessories - Included with equipment



Code JDV044

Code	Capacity	Speed	Dim. (Øxdeep)
JDV044	24x1.5 mL	1500 rpm	10,9x30,8 mm

Accessories - NOT included with equipment



Code JDV032



Code JDV033



Code JDV034



Code JDV035



Code JDV036



Code JDV037



Code JDV038



Code JDV039

Code	Capacity	Speed	Dim. (Øxdeep)
JDV032	24x0.5 mL	1500 rpm	8,1x26 mm
JDV033	24x2 mL	1500 rpm	10,9x30,8 mm
JDV034	8x5mL (round bottom)	1500 rpm	13,6x42 mm
JDV035	Bloque 8x5mL (conical bottom)	1400 rpm	17x51,5 mm
JDV036	8x15 mL	800 rpm	16,9x80 mm
JDV037	4x50 mL	600 rpm	29,6x80 mm
JDV038	8 strips PCR 0,2 mLx96	1500 rpm	5,7x13,2 mm
JDV039	Microplate ELISA	1500 rpm	127x 5 mm



## JGD - Mantles without stirring

### Analogical, series 655



- 1 | External casing made of painted steel and interior thermal insulation by mineral fiber wool, they have chromonickel heating elements.
- 2 | It has a device for holding rods. Maximum temperature: 380°C.

Code	Capacity	Ø intern	Depth
JGD001	50 mL	55 mm	40 mm
JGD002	100 mL	70 mm	45 mm
JGD003	250 mL	90 mm	55 mm
JGD004	500 mL	105 mm	60 mm
JGD005	1000 mL	140 mm	85 mm
JGD006	2000 mL	180 mm	105 mm
JGD007	3000 mL	210 mm	115 mm
JGD008	5000 mL	240 mm	140 mm

### Battery of analog heating mantles



- 1 | Continuous operating mode with temperatures up to 450 °C on the surface of the blanket. Battery of heating blankets with individually adjustable positions. Includes an aluminum support rod and mounting clip.

Code	Capacity	Positions	Ø intern	Depth
JGD010	250 mL	4	95 mm	75 mm
JGD011	250 mL	6	95 mm	75 mm
JGD012	500 mL	4	110 mm	80 mm
JGD013	500 mL	6	110 mm	80 mm

## JGB - Mantles with stirring

### Heating mantle, series 656



- 1 | External casing made of painted steel and interior thermal insulation by mineral fiber wool, they have chromonickel heating elements.
- 2 | Maximum stirring speed: 1400 rpm. Maximum temperature: 380°C.
- 3 | Supplied with stirring rod, support and magnet.

Code	Capacity	Ø intern	Depth
JGB001	100 mL	70 mm	45 mm
JGB002	250 mL	90 mm	55 mm
JGB003	500 mL	105 mm	60 mm
JGB004	1000 mL	140 mm	85 mm

### Digital heating mantle, series 658



- 1 | External casing made of painted steel and interior thermal insulation by mineral fiber wool, they have chromonickel heating elements
- 2 | Analogical regulation of the speed by means of potentiometer and digital regulation of the temperature with LED display.
- 3 | Maximum stirring speed: 1400 rpm. Maximum temperature: 380°C.
- 4 | Supplied with stirring rod, support and magnet and Pt100 temperature probe.

Code	Capacity	Ø intern	Depth
JGB005	250 mL	90 mm	55 mm
JGB006	500 mL	105 mm	60 mm
JGB007	1000 mL	140 mm	85 mm
JGB008	2000 mL	180 mm	105 mm



## JGD - Mantles without stirring

### ► “Fibroman HT-W”



- 1| For adjustable temperatures from ambient +5 °C to 400 °C.
- 2| Stability  $\pm 0,5$  to 1 °C according to temperature.

Code	Cap. mL	Ø Flask cm	Dimensions cm	Sensor Ø Leng mm	Stability °C	Power W	Weight Kg
JGD510	100	65 to 67	13x22x26	4x170	$\pm 0.5$ to 1	130	1,5
JGD511	250	83 to 87	13x26x29	4x170	$\pm 0.5$ to 1	216	3
JGD512	500	102 to 105	13x26x29	4x170	$\pm 0.5$ to 1	220	3,5
JGD513	1000	132 to 139	14x30x33	4x170	$\pm 0.5$ to 1	500	4
JGD514	2000	164 to 170	16x31x34	4x200	$\pm 0.5$ to 1	760	5

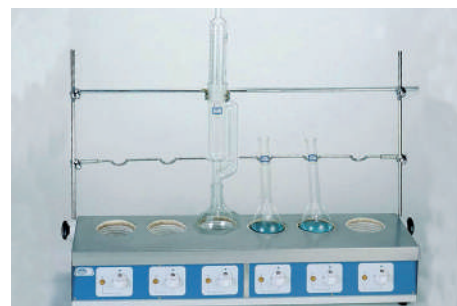


### ► Banks of heating mantles for digestion



- 1| Independent heating control for each position.
- 2| 2 height and angle adjustable bars to support condensers or other glassware for digestion or extraction.

Code	For flask	Flask vol	Places	Dimensions	Power	Weight
JGD524	Kjeldahl / Soxhlet	300-500 mL	4	18x76x25 cm	1500 W	12 Kg
JGD525	Kjeldahl / Soxhlet	300-500 mL	6	18x105x25 cm	2200 W	16 Kg
JGD526	Micro-Kjeldahl	100 mL	4	16x59x21 cm	510 W	9 Kg
JGD527	Micro-Kjeldahl	100 mL	6	16x81x21 cm	900 W	12 Kg



## JGJ - Hot plates

### ► Position hot plate digital RSLAB500-Pro



- 1| The body is coated with highly resistant epoxy paint..
- 2| Heating plate with one position and adjustable thermostat with 5 temperature settings and overheat protection. It also includes a pilot light.

Code	JGJ004	JGJ003
Average temp.	250 °C; 400 °C	1000 W; 400 °C
Plate	Ø 155 mm	Ø 155 mm (x2)
Voltaje	230 V	230 V
Power	1000 W	2000 W
Weight	1,65 Kg	6,3 Kg



### ► Round Hotplates



- 1| Cast steel plate with embedded heating elements throughout the plate surface.
- 2| Fast heating rate at maximum power setting.
- 3| Enamelled outer casing that is resistant to high temperatures and corrosive agents.

Code	JGJ501	JGJ502	JGJ503
Plate Ø	12 cm	15 cm	19 cm
Dimensions	8x20x20 cm	8x22x22 cm	8x26x26 cm
Power	800 W	1600 W	2100 W
Weight	2,1 Kg	3 Kg	4,5 Kg





JGJ - Hot plates

Digital Hotplate RSLab 500-Pro



- 1| Glass ceramic square work plate provides excellent chemical resistance and more efficient heat transfer. LCD Display for precise monitoring of temperature.
- 2| Temperature control is possible by connecting an external PT1000 temperature sensor (not included). The "HOT" warning will flash when the work plate temperature is above 50°C, even when the hotplate is turned off.
- 3| Data port where to insert a Micro SD card to record the running data in real time.

<b>Code</b>	JGJ001
<b>Work plate dimensions (L x A)</b>	254x254mm
<b>Work plate material</b>	Glass ceramic
<b>Display (temperature, time)</b>	LCD
<b>Timer</b>	1min-99h59min
<b>Temperature range</b>	RT-500°C, increment 1°C
<b>Temperature control accuracy</b>	±1°C (<100°C), ±1% (>100°C)
<b>Overheating protection</b>	540°C
<b>Temperature readability</b>	0,1°C
<b>External temperature sensor</b>	PT1000 (±0,2°C)
<b>Protection class</b>	IP21
<b>Power</b>	1550W
<b>Voltage frequency</b>	100-120/200-240V, 50/60Hz
<b>Dimensions (LxAxH)</b>	424x328x138 mm
<b>Weight</b>	6,3kg

Hotplate-Rectangular "Combiplac"



- 1| Electronic energy temperature control.
- 2| The non warping steel hotplate has heating elements embedded throughout the hotplate surface maintaining the heat distribution.
- 3| For adjustable temperatures on plate up to 400 °C.

<b>Code</b>	JGJ506	JGJ507
<b>Plate</b>	20x40 cm	30x30 cm
<b>Dimensions</b>	12x22x55 cm	13x33x46 cm
<b>Power</b>	2300 W	2800 W
<b>Weight</b>	9 Kg	13 Kg

Rectangular hotplate "Placfin"



- 1| Temperature control by a hydraulic thermostat.
- 2| Protected thermometer from 0 °C to 130 °C.
- 3| Hotplate surface protected by chemically treated aluminium, with heating elements distributed throughout the hotplate's surface.
- 4| For adjustable temperatures on plate from RT+5 to 130°C.

<b>Code</b>	JGJ513
<b>Plate</b>	23x22 cm
<b>Dimensions</b>	11x22x30 cm
<b>Power</b>	1500 W
<b>Weight</b>	3,7 Kg

See the heating plate for histology ZFP009 on page 438



## JGJ - Hot plates

### Bank of circular hotplates "Uniplac"



- 1 | Independent hotplate control using pulsed energy regulators.
- 2 | Cast steel hotplates with embedded heating elements distributed throughout the hotplate's surface.
- 3 | Adjustable height and angle stand bars for supporting condensers and other glassware etc.
- 4 | For adjustable temperatures on plate up to 400°C.



<b>Code</b>	JGJ514	JGJ515
<b>No Places</b>	4	6
<b>Plate Ø</b>	12 cm	12 cm
<b>Dimensions</b>	23 77 27 cm	23 105 27 cm
<b>Power</b>	2200 W	3300 W
<b>Weight</b>	15 Kg	22 Kg

## JJB - Refrigerated cabinets

### Chassis with metal drawers



- 1 | With forced air circulation. Internal air circulation turbine for greater homogeneity. For adjustable temperatures from +0°C to +15°C.
- 2 | Pt100 sensor with probe error alarm.
- 3 | External unit and metallic door, lacquered in white, and interior chamber made of white sheet metal with non-toxic finish.
- 4 | Double-glazed glass door and interior light for the M model.
- 5 | Hermetic compressor unit. Automatic defrosting with water evaporation. Adjustable front support legs.
- 6 | Reversible door opening and door with lock. Supplied with PVC-coated steel shelves.



Code	Model	Capacity	HxLxP (interior)	HxLxP (exterior)	Consu.	Weight
JJB505	PHARMALOW-L	350 L	145x47x44	164x60x61	180	56

## JJD - Refrigerated cabinets accessories

### Chassis with metal drawers and shelves



- 1 | Modular system with sliding drawers featuring perforated bottoms, each drawer divided into three fixed compartments, and each compartment equipped with four removable methacrylate dividers.

#### Code For model

JJD503 Drawer supplement with 3 compartments and 12 dividers

#### Shelves

JJD504 Shelf support (x4) for PHARMALOW code JJD510

JJD505 Shelf for PHARMALOW code JJD510 (for each shelf, 4 shelf guides are required)





▶ JYG - Freezers

▶ Chest Freezers “Combatemp”



1 | Epoxy covered external case. Interior of aluminium, with guide supports for baskets or trays.

<b>Code</b>	JYG501	JYG502	JYG503	JYG504
<b>Models</b>	S-30	L-30	S-40	L-40
<b>Capacity</b>	206 L	343 L	215 L	352 L
<b>Freezing cap.</b>	28 Kg	38 Kg	30 Kg	40 Kg
<b>Temperature</b>	-28 °C	-28 °C	-40 °C	-40 °C
<b>Dimensions</b>				
<b>Interior</b>	74x63x53cm	74x100x53cm	63x89x41cm	65x117x50cm
<b>Exterior</b>	92x75x71cm	92x113x71cm	92x113x76cm	92x137x81cm
<b>Power</b>	160 W	200 W	230W	400W
<b>Weight</b>	38 Kg	56 Kg	57 Kg	72 Kg

▶ JZB - Heating elements

▶ Water recirculators “Interheater”



1 | Water circulation unit, designed to feed closed water loop circuits for condensers, distillation columns, reactor jackets, viscometers, electrophoresis baths etc. designed specifically for:

- Constant temperature.
- Constant pump rate of refrigerated fluid.
- Closed loop circuit, avoids the build up of scale in cooling coils, and cooling circuits.

<b>Code</b>	JZB510
<b>Dimensions</b>	70x43x56 cm
<b>Reg. Range</b>	Amb + 5 to 90 °C
<b>Power</b>	4100 W
<b>Weight</b>	22 Kg

▶ NEW PRODUCTS



▶ Large capacity heating mantle with stirring



Code	Model	Capacity	Max. temperature	Power
JGB009	Analogical	20 L	380°C	2,5 kW
JGB010	Digital	20 L	380°C	2,5 kW